

PHILIPS

SAA7108E

VIVO
Daughter Board

MANUAL

Philips SAA7108E PC-Codec module for Nvidia Graphics Accelerator

The SAA7108E is a new multi-standard video decoder and encoder chip, offering high quality video input and TV output processing as required by PC-99 specifications.

Video decoder

2 analog inputs, internal analog source selectors, 1x Y/C and 1 x CVBS

Fully programmable static gain or automatic gain control for the selected CVBS or Y/C channel

Two built-in analog anti-aliasing filters

Automatic detection of 50 Hz and 60 Hz field frequency and automatic switching between PAL and NTSC standards

Brightness Contrast Saturation (BCS) and hue control on-chip

Detection of copy protected input signals according to the macrovision standard. Can be used to prevent unauthorized recording of pay-TV or video tape signals.

Video scaler

Both up and down-scaling

Phase accuracy better than 1/64 pixel or line, horizontally or vertically

Independent scaling definitions for odd and even fields

Anti-alias filter for horizontal scaling

Video encoder

Digital PAL/NTSC encoder with integrated high quality scaler and anti-flicker filter for TV output from a PC

Up to 800 x 600 graphics data at 60 Hz or 50 Hz with programmable underscan range

Selectable cross-colour reduction to improve CVBS output

Down-scaling from 1 : 1 to 1 : 2 and up to 20% up-scaling

Support for hardware cursor

Programmable border colour of underscan area

Macrovision Pay-per-View copy protection system rev. 7.01 and rev. 6.1 as option

Chip specifications

Monolithic CMOS 3.3 V device, 5 V tolerant digital I/O ports

BGA156 package

Connector, cable and PCB

9 pin Mini din (Female) connector

One transfer cable from 9 pin mini din (Male) to 1 s-video out, 1 RCA Video out, 1 S-video in and 1 RCA video in.

6 layers PCB

1. Drivers support:

WDM drivers right now only support Windows 98 and Windows ME

New drivers will be released in the future

2. Cable:

1 to 4 cable specification:

Mini din 9 pin male head: connect to daughter board.

Orange mini din 4 pin female: S-video out

Green RCA jack: Composite out (AV-out)

White mini din 4 pin female: S-video in

Yellow RCA jack: Composite in (AV-in)

3. Bundle Application: (optional)

Ulead – Video Studio

Or equivalent software

Application program will have manual and installation guide included in the bundle package.

4. NVIDIA WDM Drivers installation guide:

4.1 Install from SmartInstall:

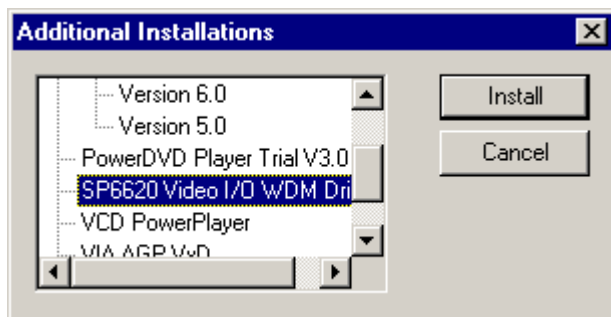
Put the DRIVERS CD in your CD-ROM Drive

Click "Additional installations"

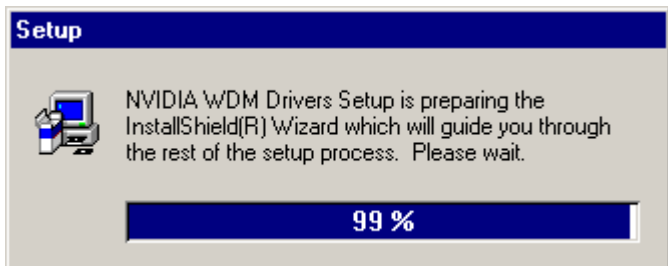


Now shows "Additional Installations" window

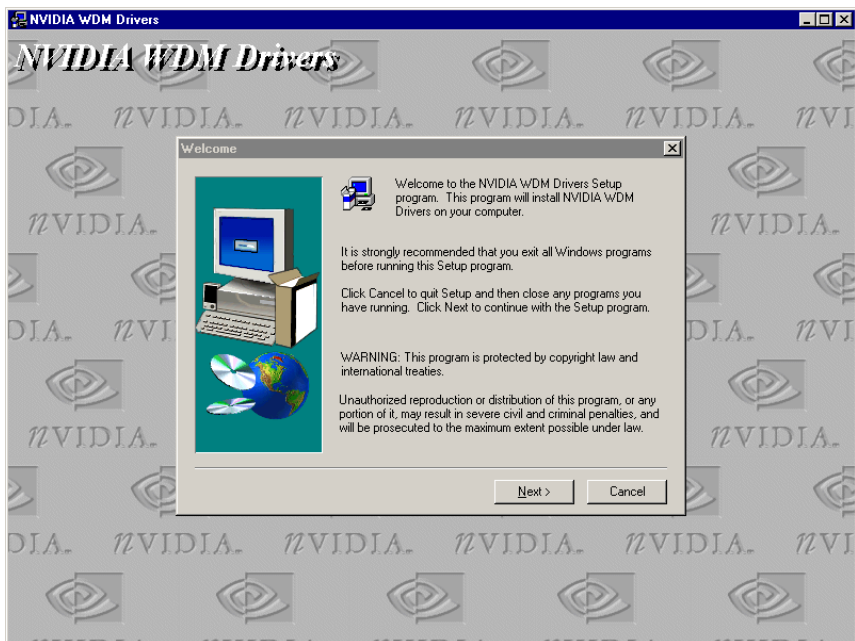
Find "SP6620 Video I/O WDM Drivers" then click "Install"



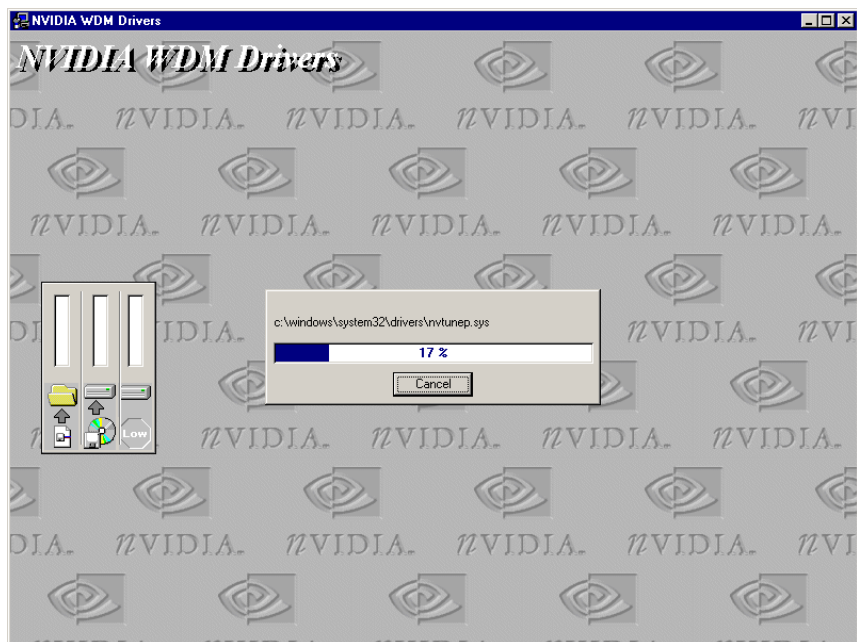
System will now prepare to install drivers for you.



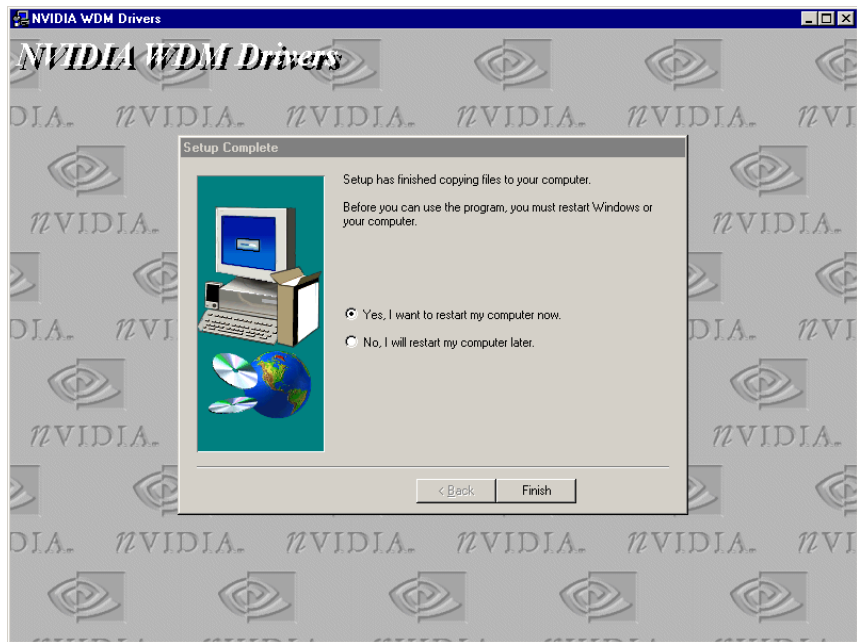
Click "Next" to start drivers installation.



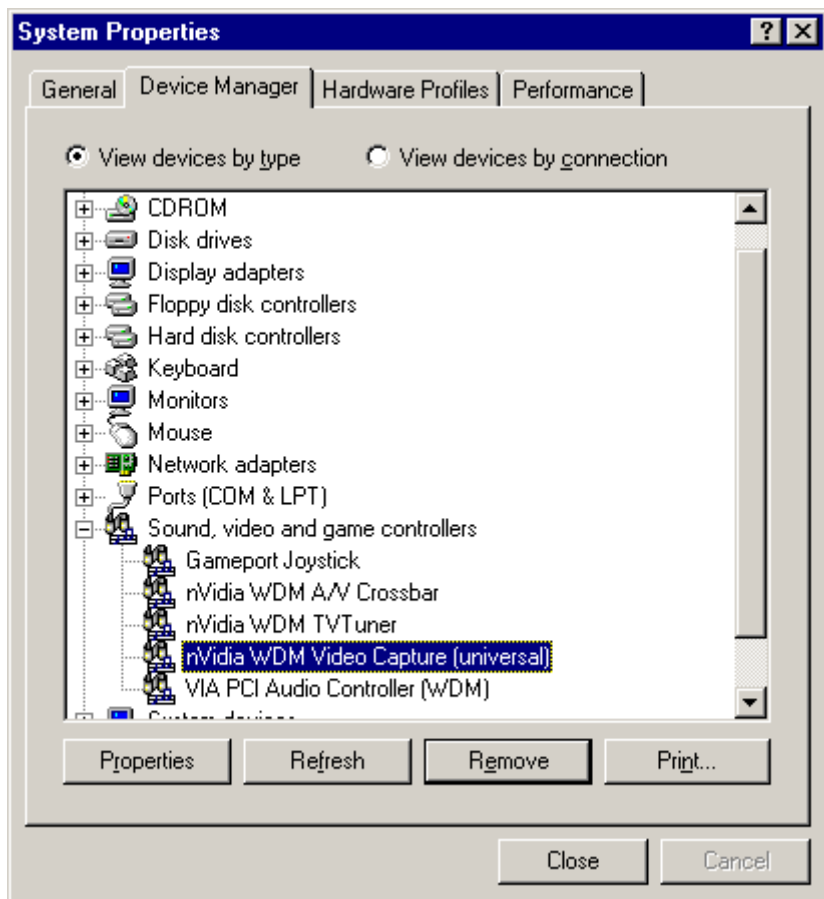
System copy files.



Now installation complete, click "Finish" to Restart system.



After system comes up, you will find the “nVidia WDM Video Capture” listed in the System properties window. (The other WDM drivers [like TVTUNER] is not useful with 6620 VIVO board)



4.2 Install directly:

The 6620 WDM drivers located at CD

\Util\6620\setup.exe

Or CD \drivers\Philips\6620\setup.exe

Execute the setup.exe file will show the same procedures as above.

Eof.

Trademark Acknowledgments

All brand names and trademarks are the property of their owners.