



USER GUIDE



EZ CARD 10/100/1000

32-bit 10/100/1000Mbps Gigabit Ethernet PCI Adapter

SMC9452TX-2

Copyright

Information furnished by SMC Networks, Inc. (SMC) is believed to be accurate and reliable. However, no responsibility is assumed by SMC for its use, nor for any infringements of patents or other rights of third parties which may result from its use. No license is granted by implication or otherwise under any patent or patent rights of SMC. SMC reserves the right to change specifications at any time without notice.

Copyright © 2008 by
SMC Networks, Inc.
20 Mason
Irvine, CA 92618

All rights reserved. Printed in China

Trademarks

SMC is a registered trademark; and EZ Connect is a trademark of SMC Networks, Inc. Other product and company names are trademarks or registered trademarks of their respective holders.

Limited Warranty

Limited Warranty Statement: SMC Networks, Inc. ("SMC") warrants its products to be free from defects in workmanship and materials, under normal use and service, for the applicable warranty term. All SMC products carry a standard 90-day limited warranty from the date of purchase from SMC or its Authorized Reseller. SMC may, at its own discretion, repair or replace any product not operating as warranted with a similar or functionally equivalent product, during the applicable warranty term. SMC will endeavor to repair or replace any product returned under warranty within 30 days of receipt of the product. The standard limited warranty can be upgraded to a Limited Lifetime* warranty by registering new products within 30 days of purchase from SMC or its Authorized Reseller. Registration can be accomplished via the enclosed product registration card or online via the SMC website. Failure to register will not affect the standard limited warranty. The Limited Lifetime warranty covers a product during the Life of that Product, which is defined as the period of time during which the product is an "Active" SMC product. A product is considered to be "Active" while it is listed on the current SMC price list. As new technologies emerge, older technologies become obsolete and SMC will, at its discretion, replace an older product in its product line with one that incorporates these newer technologies. At that point, the obsolete product is discontinued and is no longer an "Active" SMC product. A list of discontinued products with their respective dates of discontinuance can be found at: http://www.smc.com/index.cfm?action=customer_service_warranty.

All products that are replaced become the property of SMC. Replacement products may be either new or reconditioned. Any replaced or repaired product carries either a 30-day limited warranty or the remainder of the initial warranty, whichever is longer. SMC is not responsible for any custom software or firmware, configuration information, or memory data of Customer contained in, stored on, or integrated with any products returned to SMC pursuant to any warranty. Products returned to SMC should have any customer-installed accessory or add-on components, such as expansion modules, removed prior to returning the product for replacement. SMC is not responsible for these items if they are returned with the product. Customers must contact SMC for a Return Material Authorization number prior to returning any product to SMC. Proof of purchase may be required. Any product returned to SMC without a valid Return Material Authorization (RMA) number clearly marked on the outside of the package will be returned to customer at customer's expense. For warranty claims within North America, please call our toll-free customer support number at (800) 762-4968. Customers are responsible for all shipping charges from their facility to SMC. SMC is responsible for return shipping charges from SMC to customer.

WARRANTIES EXCLUSIVE: IF AN SMC PRODUCT DOES NOT OPERATE AS WARRANTED ABOVE, CUSTOMER'S SOLE REMEDY SHALL BE REPAIR OR REPLACEMENT OF THE PRODUCT IN QUESTION, AT SMC'S OPTION. THE FOREGOING

WARRANTIES AND REMEDIES ARE EXCLUSIVE AND ARE IN LIEU OF ALL OTHER WARRANTIES OR CONDITIONS, EXPRESS OR IMPLIED, EITHER IN FACT OR BY OPERATION OF LAW, STATUTORY OR OTHERWISE, INCLUDING WARRANTIES OR CONDITIONS OF MERCHANTABILITY AND FITNESS FOR A PARTICULAR PURPOSE. SMC NEITHER ASSUMES NOR AUTHORIZES ANY OTHER PERSON TO ASSUME FOR IT ANY OTHER LIABILITY IN CONNECTION WITH THE SALE, INSTALLATION, MAINTENANCE OR USE OF ITS PRODUCTS. SMC SHALL NOT BE LIABLE UNDER THIS WARRANTY IF ITS TESTING AND EXAMINATION DISCLOSE THE ALLEGED DEFECT IN THE PRODUCT DOES NOT EXIST OR WAS CAUSED BY CUSTOMER'S OR ANY THIRD PERSON'S MISUSE, NEGLIGENCE, IMPROPER INSTALLATION OR TESTING, UNAUTHORIZED ATTEMPTS TO REPAIR, OR ANY OTHER CAUSE BEYOND THE RANGE OF THE INTENDED USE, OR BY ACCIDENT, FIRE, LIGHTNING, OR OTHER HAZARD. LIMITATION OF LIABILITY: IN NO EVENT, WHETHER BASED IN CONTRACT OR TORT (INCLUDING NEGLIGENCE), SHALL SMC BE LIABLE FOR INCIDENTAL, CONSEQUENTIAL, INDIRECT, SPECIAL, OR PUNITIVE DAMAGES OF ANY KIND, OR FOR LOSS OF REVENUE, LOSS OF BUSINESS, OR OTHER FINANCIAL LOSS ARISING OUT OF OR IN CONNECTION WITH THE SALE, INSTALLATION, MAINTENANCE, USE, PERFORMANCE, FAILURE, OR INTERRUPTION OF ITS PRODUCTS, EVEN IF SMC OR ITS AUTHORIZED RESELLER HAS BEEN ADVISED OF THE POSSIBILITY OF SUCH DAMAGES. SOME STATES DO NOT ALLOW THE EXCLUSION OF IMPLIED WARRANTIES OR THE LIMITATION OF INCIDENTAL OR CONSEQUENTIAL DAMAGES FOR CONSUMER PRODUCTS, SO THE ABOVE LIMITATIONS AND EXCLUSIONS MAY NOT APPLY TO YOU. THIS WARRANTY GIVES YOU SPECIFIC LEGAL RIGHTS, WHICH MAY VARY FROM STATE TO STATE. NOTHING IN THIS WARRANTY SHALL BE TAKEN TO AFFECT YOUR STATUTORY RIGHTS.

* SMC will provide warranty service for one year following discontinuance from the active SMC price list. Under the limited lifetime warranty, internal and external power supplies, fans, and cables are covered by a standard one-year warranty from date of purchase.

SMC Networks, Inc.
20 Mason
Irvine, CA 92618

Compliances

FCC - Class A

This equipment has been tested and found to comply with the limits for a Class A digital device, pursuant to Part 15 of the FCC Rules. These limits are designed to provide reasonable protection against harmful interference in a residential installation. This equipment generates, uses and can radiate radio frequency energy and, if not installed and used in accordance with instructions, may cause harmful interference to radio communications. However, there is no guarantee that the interference will not occur in a particular installation. If this equipment does cause harmful interference to radio or television reception, which can be determined by turning the equipment off and on, the user is encouraged to try to correct the interference by one or more of the following measures:

- Reorient the receiving antenna
- Increase the separation between the equipment and receiver
- Connect the equipment into an outlet on a circuit different from that to which the receiver is connected
- Consult the dealer or an experienced radio/TV technician for help

EC Conformance Declaration - Class A

SMC contact for these products in Europe is:

SMC Networks Europe,
Edificio Conata II,
Calle Fructuós Gelabert 6-8, 2o, 4a,
08970 - Sant Joan Despí,
Barcelona, Spain.

This information technology equipment complies with the requirements of the Council Directive 89/336/EEC on the Approximation of the laws of the Member States relating to Electromagnetic Compatibility and 73/23/EEC for electrical equipment used within certain voltage limits and the Amendment Directive 93/68/EEC. For the evaluation of the compliance with these Directives, the following standards were applied:

RFI Emission:

- Limit class A according to EN 55022:1998, IEC 60601-1-2 (EMC, medical)
- Limit class A for harmonic current emission according to EN 61000-3-2/1995
- Limitation of voltage fluctuation and flicker in low-voltage supply system according to EN 61000-3-3/1995

Immunity:

- Product family standard according to EN 55024:1998
- Electrostatic Discharge according to EN 61000-4-2:1995
(Contact Discharge: ± 4 kV, Air Discharge: ± 8 kV)
- Radio-frequency electromagnetic field according to EN 61000-4-3:1996
(80 - 1000 MHz with 1 kHz AM 80% Modulation: 3 V/m)
- Electrical fast transient/burst according to EN 61000-4-4:1995 (AC/DC)

power supply: ± 1 kV, Data/Signal lines: ± 0.5 kV)

- Surge immunity test according to EN 61000-4-5:1995 (AC/DC Line to Line: ± 1 kV, AC/DC Line to Earth: ± 2 kV)
- Immunity to conducted disturbances, Induced by radio-frequency fields: EN 61000-4-6:1996 (0.15 - 80 MHz with
1 kHz AM 80% Modulation: 3 V/m)
- Power frequency magnetic field immunity test according to EN 61000-4-8:1993 (1 A/m at frequency 50 Hz)
- Voltage dips, short interruptions and voltage variations immunity test according to EN 61000-4-11:1994 (>95% Reduction @10 ms, 30% Reduction @500 ms, >95% Reduction @5000 ms)

LVD

- EN 60950-1:2001

Please read the following safety information carefully before installing the device:

WARNING: Installation and removal of the unit must be carried out by qualified personnel only.

- This guide is intended for use by network administrators who are responsible for setting up and installing network equipment; consequently it assumes a basic working knowledge of LANs (Local Area Networks).
- The unit must be connected to an earthed (grounded) outlet to comply with international safety standards.
- Do not connect the unit to an A.C. outlet (power supply) without an earth (ground) connection.
- The appliance coupler (the connector to the unit and not the wall plug) must have a configuration for mating with an EN 60320/IEC 320 appliance inlet.
- The socket outlet must be near to the unit and easily accessible. You can only remove power from the unit by disconnecting the power cord from the outlet.
- This unit operates under SELV (Safety Extra Low Voltage) conditions according to IEC 60950. The conditions are only maintained if the equipment to which it is connected also operates under SELV conditions.

Veillez lire à fond l'information de la sécurité suivante avant d'installer le Device:

AVERTISSEMENT: L'installation et la dépose de ce groupe doivent être confiés à un personnel qualifié.

- Ne branchez pas votre appareil sur une prise secteur (alimentation électrique) lorsqu'il n'y a pas de connexion de mise à la terre (mise à la masse).
- Vous devez raccorder ce groupe à une sortie mise à la terre (mise à la masse) afin de respecter les normes internationales de sécurité.
- Le coupleur d'appareil (le connecteur du groupe et non pas la prise murale) doit respecter une configuration qui permet un branchement sur une entrée d'appareil EN 60320/IEC 320.
- La prise secteur doit se trouver à proximité de l'appareil et son accès doit être facile. Vous ne pouvez mettre l'appareil hors circuit qu'en débranchant son cordon électrique au niveau de cette prise.
- L'appareil fonctionne à une tension extrêmement basse de sécurité qui est conforme à la norme IEC 60950. Ces conditions ne sont maintenues que si l'équipement auquel il est raccordé fonctionne dans les mêmes conditions.

Bitte unbedingt vor dem Einbauen des RPU die folgenden Sicherheitsanweisungen durchlesen:

WARNUNG: Die Installation und der Ausbau des Geräts darf nur durch Fachpersonal erfolgen.

- Diese Anleitung ist für die Benutzung durch Netzwerkadministratoren vorgesehen, die für die Installation und das Einstellen von Netzwerkkomponenten verantwortlich sind; sie setzt Erfahrung bei der Arbeit mit LANs (Local Area Networks) voraus.
- Das Gerät sollte nicht an eine ungeerdete Wechselstromsteckdose angeschlossen werden.
- Das Gerät muß an eine geerdete Steckdose angeschlossen werden, welche die internationalen Sicherheitsnormen erfüllt.
- Der Gerätestecker (der Anschluß an das Gerät, nicht der Wandsteckdosenstecker) muß einen gemäß EN 60320/IEC 320 konfigurierten Geräteeingang haben.
- Die Netzsteckdose muß in der Nähe des Geräts und leicht zugänglich sein. Die Stromversorgung des Geräts kann nur durch Herausziehen des Geräteretzkabels aus der Netzsteckdose unterbrochen werden.
- Der Betrieb dieses Geräts erfolgt unter den SELV-Bedingungen (Sicherheitskleinstspannung) gemäß IEC 60950. Diese Bedingungen sind

nur gegeben, wenn auch die an das Gerät angeschlossenen Geräte unter SELV-Bedingungen betrieben werden

Stromkabel. Dies muss von dem Land, in dem es benutzt wird geprüft werden:	
Schweiz	Dieser Stromstecker muß die SEV/ASE 1011 Bestimmungen einhalten.
Europe	Das Netzkabel muß vom Typ HO3VVF3GO.75 (Mindestanforderung) sein und die Aufschrift <HAR> oder <BASEC> tragen Der Netzstecker muß die Norm CEE 7/7 erfüllen (.SCHUKO.).

Warnings and Cautionary Messages

Warning: This product does not contain any serviceable user parts.

Warning: Installation and removal of the unit must be carried out by qualified personnel only.

Warning: When connecting this device to a power outlet, connect the field ground lead on the tri-pole power plug to a valid earth ground line to prevent electrical hazards.

Caution: Wear an anti-static wrist strap or take other suitable measures to prevent electrostatic discharge when handling this equipment.

Caution: Do not plug a phone jack connector in the RJ-45 port. This may damage this device. Les raccordeurs ne sont pas utilisé pour le système téléphonique!

Caution: Use only twisted-pair cables with RJ-45 connectors that conform to FCC standards.

Warnings (in German)

Achtung: Dieses Produkt enthält keine Teile, die eine Wartung vom Benutzer benötigen.

Achtung: Installation und Deinstallation des Gerätes müssen von qualifiziertem Servicepersonal durchgeführt werden.

Achtung: Wenn das Gerät an eine Steckdose angeschlossen wird, muß der Masseanschluß an Netzstecker mit Schutz Erde verbunden werden, um elektrische Gefahren zu vermeiden.

Environmental Statement

The manufacturer of this product endeavours to sustain an environmentally-friendly policy throughout the entire production process. This is achieved through the following means:

- Adherence to national legislation and regulations on environmental production standards.
- Conservation of operational resources.
- Waste reduction and safe disposal of all harmful un-recyclable by-products.
- Recycling of all reusable waste content.
- Design of products to maximize recyclables at the end of the product's life span.
- Continual monitoring of safety standards.

End of Product Life Span

This product is manufactured in such a way as to allow for the recovery and disposal of all included electrical components once the product has reached the end of its life.

Manufacturing Materials

There are no hazardous nor ozone-depleting materials in this product.

Documentation

All printed documentation for this product uses biodegradable paper that originates from sustained and managed forests. The inks used in the printing process are non-toxic.

Purpose

This guide details the hardware features of the product, including its physical and performance-related characteristics, and how to install the product.

Audience

The guide is intended for use by network administrators who are responsible for installing and setting up network equipment; consequently, it assumes a basic working knowledge of LANs (Local Area Networks).

Diese Anleitung ist für die Benutzung durch Netzwerkadministratoren vorgesehen, die für die Installation und das Einstellen von Netzwerkkomponenten verantwortlich sind; sie setzt Erfahrung bei der Arbeit mit LANs (Local Area Networks) voraus.

Package Contents

The following items should be found in your box:

- One 10/100/1000Mbps Gigabit Ethernet PC Adapter
- One Resource CD, including
 - Drivers
 - User Guide
 - Other Helpful Information

 **Note:**

Make sure that the package contains the above items. If any of the listed items are damaged or missing, please contact with your distributor for assistance.

CONTENT

Chapter 1. Introduction.....	1
1.1 Convention	1
1.2 Product Overview	1
1.3 Main Features	2
1.4 LED Status	2
Chapter 2. Installation	3
2.1 Hardware Installation.....	3
2.2 Software Installation	4
2.2.1 Install driver for XP.....	4
2.2.2 Update driver for XP	11
2.2.3 Update driver for Vista	18
2.3 Enable Wake on LAN function	25
Appendix A: Specifications.....	28

Chapter 1. Introduction

Thank you for choosing SMC9452TX-2 Gigabit PCI Ethernet Adapter.

1.1 Convention

The Adapter or SMC9452TX-2 mentioned in this User Guide stands for SMC9452TX-2 Gigabit PCI Ethernet Adapter.

1.2 Product Overview

SMC9452TX-2 is a highly integrated and cost-effective single-chip Gigabit Ethernet Adapter that provides 32-bit performance, PCI bus master capability, and full compliance with IEEE 802.3 10Base-T, IEEE802.3u 100Base-TX and IEEE 802.3ab 1000Base-T specifications. It also supports ACPI, PCI power management for modern operating systems that are capable of Operating System Directed Power Management (OSPM) to achieve the most efficient power management.

Through the aid of a VLAN membership, SMC9452TX-2 adheres to the 802.1Q for multiple VLAN support, and 802.1P for packet prioritization. With 802.1Q support, server resources can be shared with multiple VLANs when used in conjunction with any 802.1Q-enabled Switch. With the 802.1p support, SMC9452TX-2 allows a range of Ethernet packets to be prioritized from a critical to a non-critical designation through a priority tag.

SMC9452TX-2 supports Full Duplex operations at 20/200/2000 Mbps data speeds used in conjunction with 802.3x flow control support. With 802.3x flow control SMC9452TX-2 uses both asymmetric and symmetric functions via the MAC control pause function. Any participating 802.3x flow control node can be controlled by initiating a pause control to stop incoming network traffic, to further reduce network congestion. SMC9452TX-2 also supports the WOL (Wake on LAN) Function which allows a remote station “wake” your computer when it is in Standby or Hibernate mode or after shutdown.

By default SMC9452TX-2 supports the standard 1518 Byte frame size. In addition, SMC9452TX-2 also supports Jumbo Frame transmission

It includes an interface for a boot ROM and can be used in diskless workstations, providing maximum network security and ease of management.

In addition, being PCI 2.2 compliant, SMC9452TX-2 works with 32-bit 33Mhz PCI busses. This compatibility provides users with an easy migration path to increase performance between servers and workstations for large file transfer, video editing and server clustering for data intensive applications.

1.3 Main Features

- Integrated Ethernet MAC, Physical chip and transceiver in one chip
- Complies with the IEEE802.1P, IEEE802.1Q, IEEE802.3 10Base-T, IEEE802.3u 100Base-TX and IEEE802.3ab 1000Base-T standard
- Compliant to PCI Revision 2.1/2.2
- Supports Full Duplex Flow Control (IEEE 802.3x)
- PCI local bus single-chip Ethernet controller
- Supports ACPI, PCI power management
- Supports Auto-Negotiation function, Auto-detects network speed
- Contains two large independent receive and transmit FIFOs
- One STP/UTP connector
- Provides LEDs to indicate network Link/Activity/Speed
- Supports smart remote boot ROM
- Supports Wake on LAN function
- Supports Drivers for NetWare 4.x,5.x,6.x, Windows 98/ME/2000/2003/XP/Vista, Windows NT, Linux, Dos.

1.4 LED Status

The 1000M Link/Act LED of SMC9452TX-2 indicates Link/Act status when the Adapter works in the 1000M mode. It will light when connection is built, and glitter when the Adapter is transmitting or receiving data.

The 100M Link/Act of SMC9452TX-2 indicates Link/Act status when the Adapter is working in the 100M mode. It will light when connection is built, and glitter when the Adapter is transmitting or receiving data.

Chapter 2. Installation

2.1 Hardware Installation

To install the adapter, follow these steps listed below:

Step 1: Turn off your computer and unplug the power cord and all cables.

Step 2: Remove your computer's case cover. See your computer's user guide for information about removing the cover.

Step 3: Locate an available PCI slot. PCI slot are usually white.

Step 4: Remove the screw that secures the back plate (the small piece of metal that covers the opening for PCI Adapter on the back panel of your computer), then remove the back plate.

Step 5: Carefully insert the Adapter into the PCI slot. Do not touch the metal connector on the Adapter.

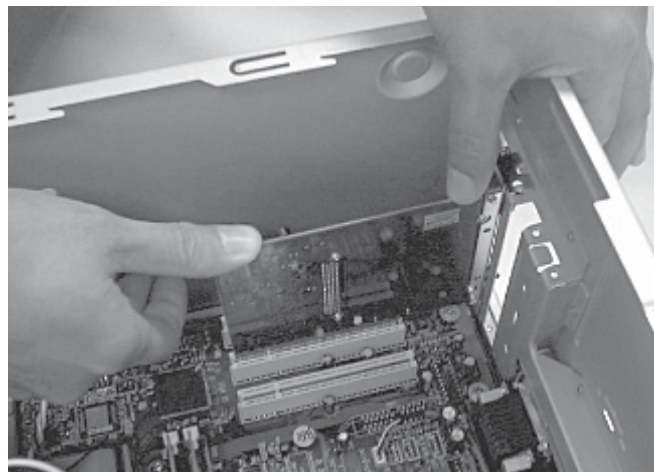


Figure 2-1

Step 6: Secure the Adapter to the case using the screw you removed from the back plate.

Step 7: Reinstall your computer's case cover.

Step 8: Plug in the power cord and other cables, and then turn on your computer.

 **Note:**

After inserting the Adapter in your Computer, you should install the driver for the Adapter. The Driver & Documentation CD provides the drivers for Win9x/ME/2000/XP/Vista, please select the appropriate driver from which for your system. The following installation takes Windows XP for example; you can install drivers for other systems similarly.

2.2 Software Installation

In this User Guide, we will take the driver installation in Windows XP for example, which is similar to the driver installation procedures for the other operation systems.

2.2.1 Install driver for XP

Step 1: After you insert the Adapter in the computer firmly, the Operating System will automatically recognize it, then the “Welcome to the Found New Hardware Wizard” screen will appear (shown in Figure 2-2). Select **No, not this time**, then click **Next**.



Figure 2-2

Step 2: Select **Install from a list or specific location (Advanced)** as shown in Figure 2-3, and then click **Next**.

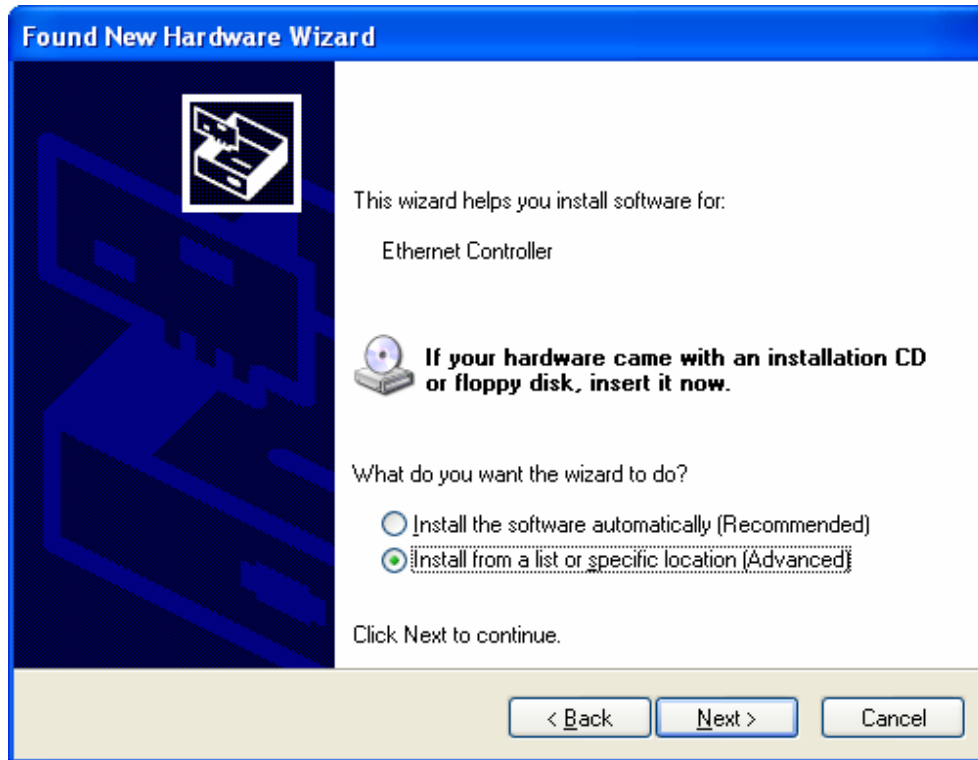
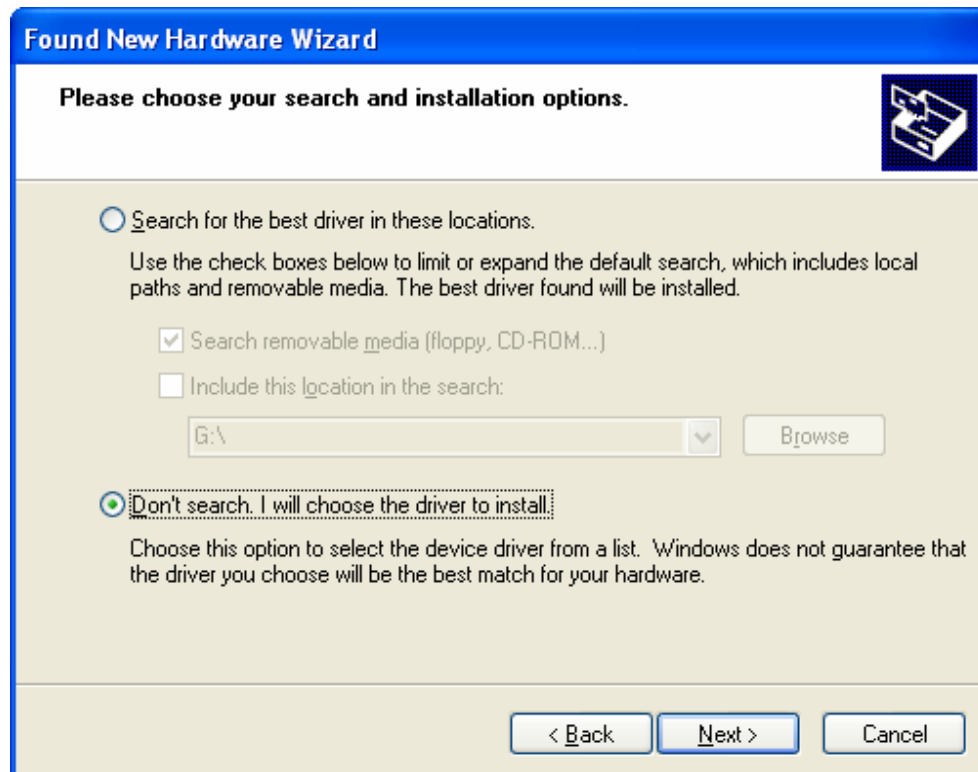


Figure 2-3

Step 3: Select **Don't search. I will choose the driver to install** as shown below. Then click **Next**.



Step 4: Select **Show All Devices** as shown in Figure 2-5, then click **Next**.

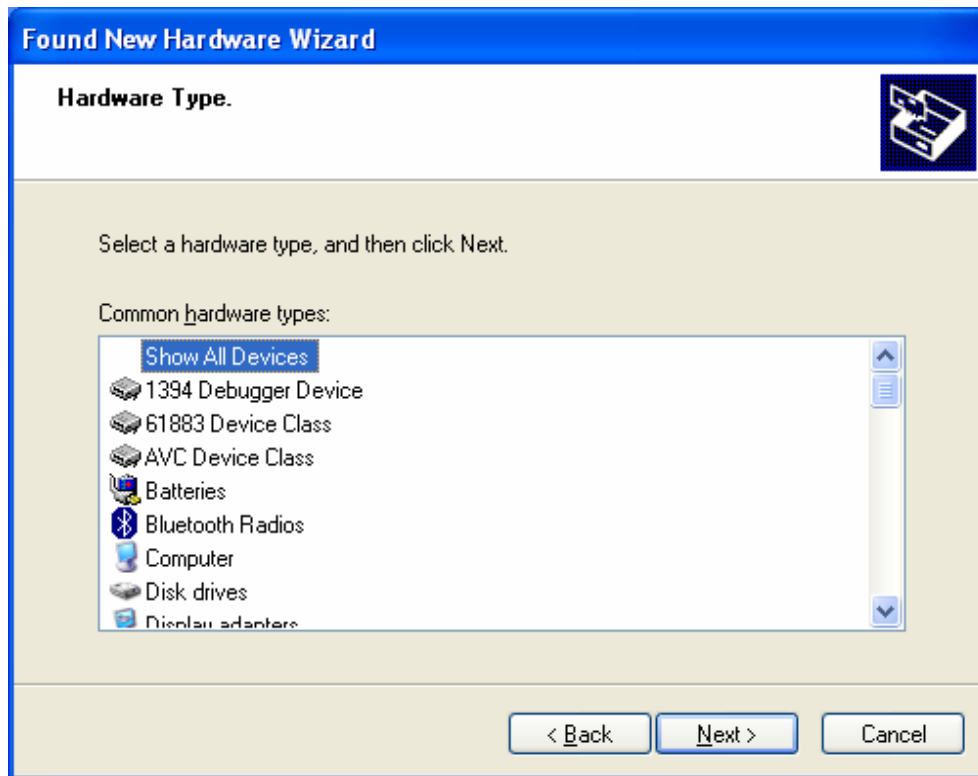


Figure 2-4

Step 5: Click **Have Disk...** in the next screen Figure 2-6.

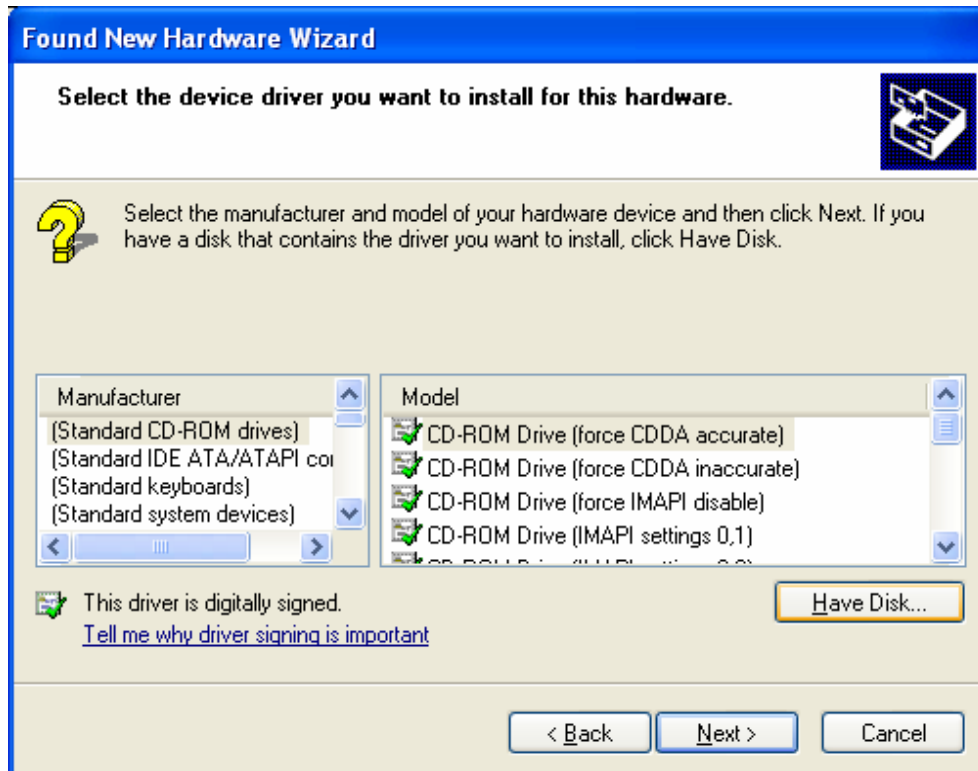


Figure 2-5

Step 6: After that, select **Browse...** as shown in Figure 2-7 to locate the driver in the next screen.

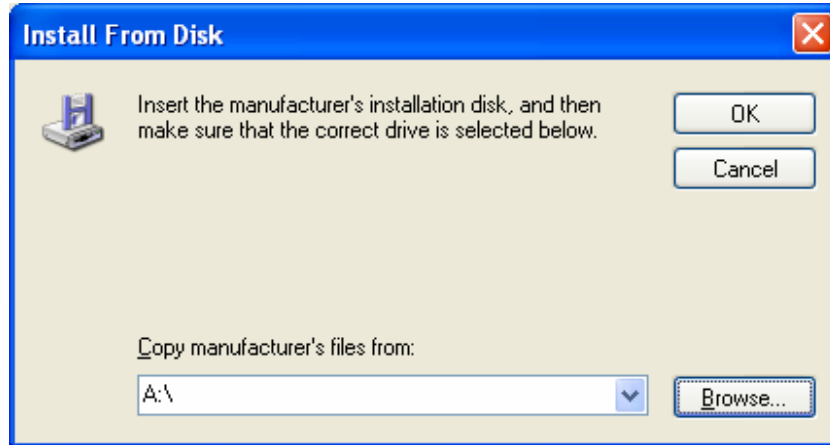


Figure 2-6

Step 7: Locate the appointed driver as shown in Figure 2-8, click **Open**.

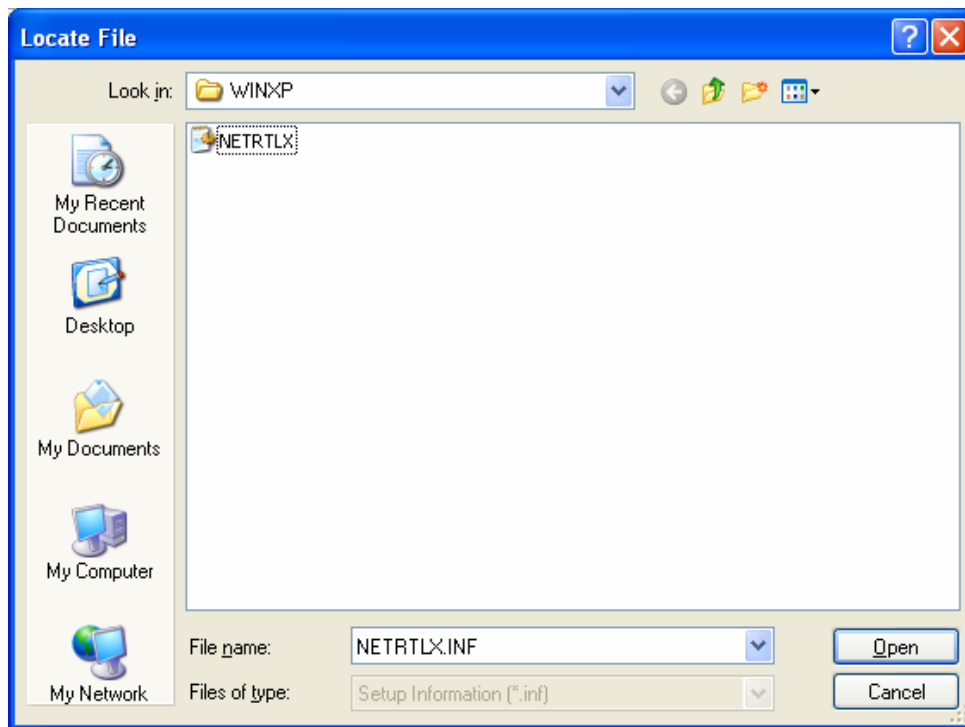


Figure 2-7

Step 8: After that, you will see the next screen (shown in Figure 2-9), click **OK**.

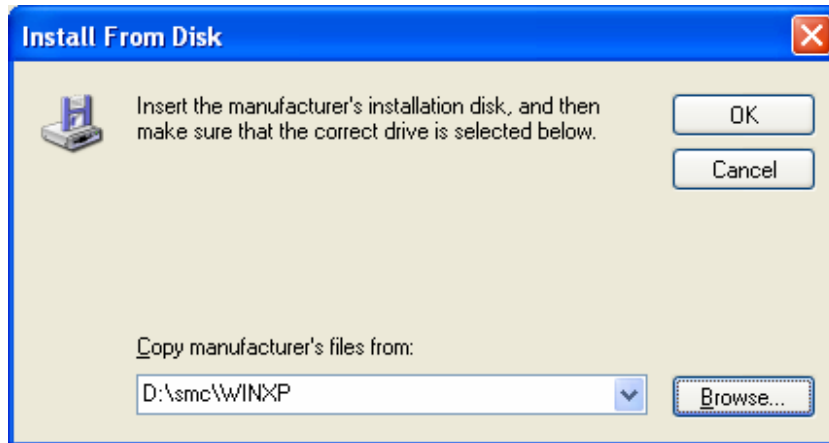


Figure 2-8

Step 9: Select the model of the Adapter as shown in Figure 2-10, then click **Next**.

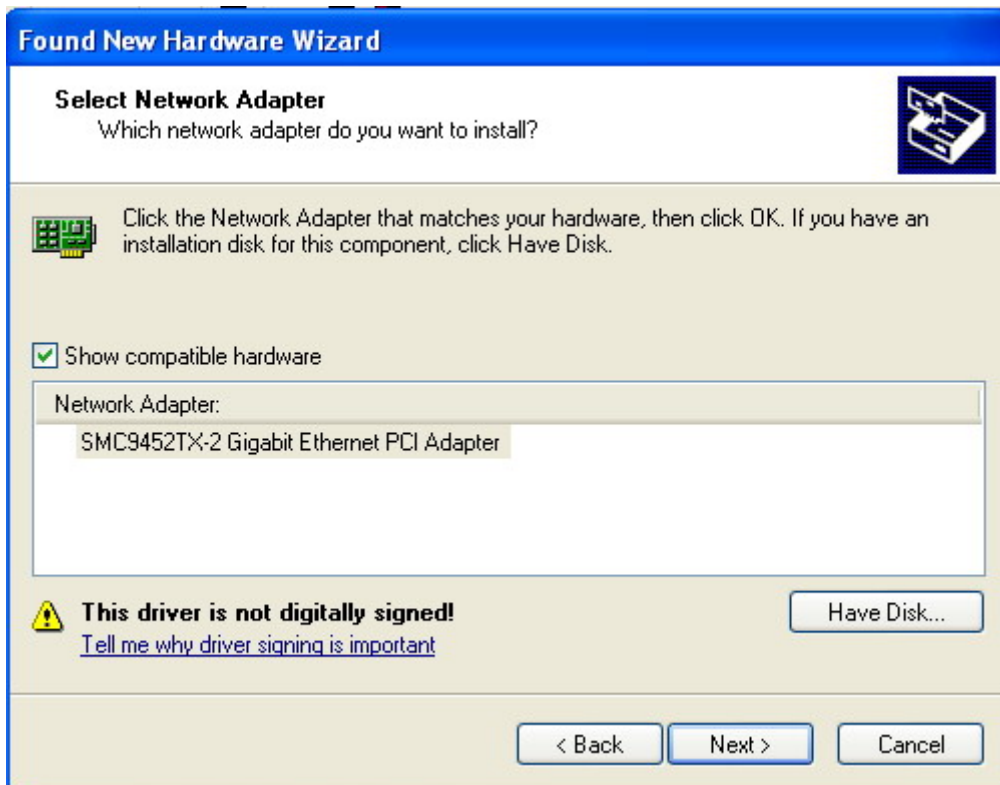


Figure 2-9

Step 10: After that, please wait few seconds for the wizard installing the software.

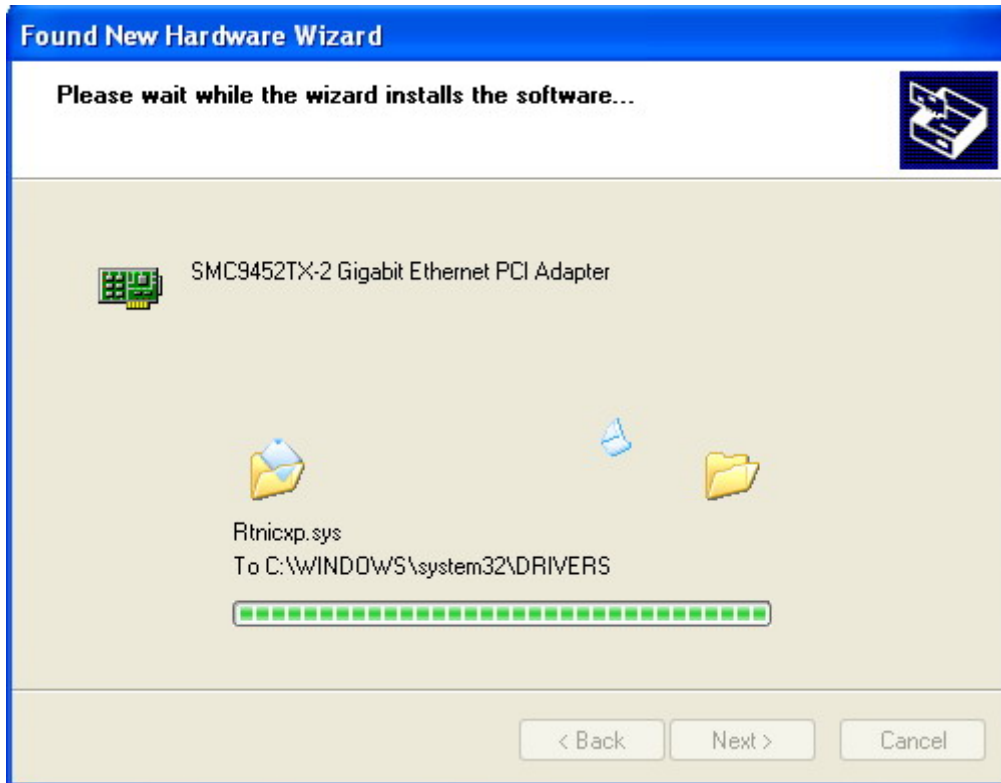


Figure 2-10

Note:

During the installation, a warning box about Windows Logo testing (shown in Figure 2-12) may pop up, please click **Continue Anyway** to continue the installation since our drivers have been tested thoroughly and are able to work with the operating system.

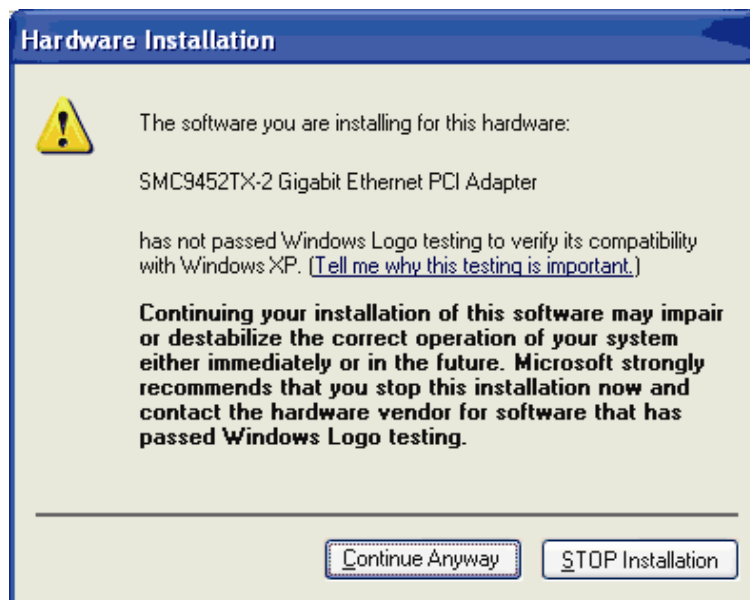


Figure 2-11

Step 11: Finally, click **Finish**. And the driver installation for Windows XP completes.

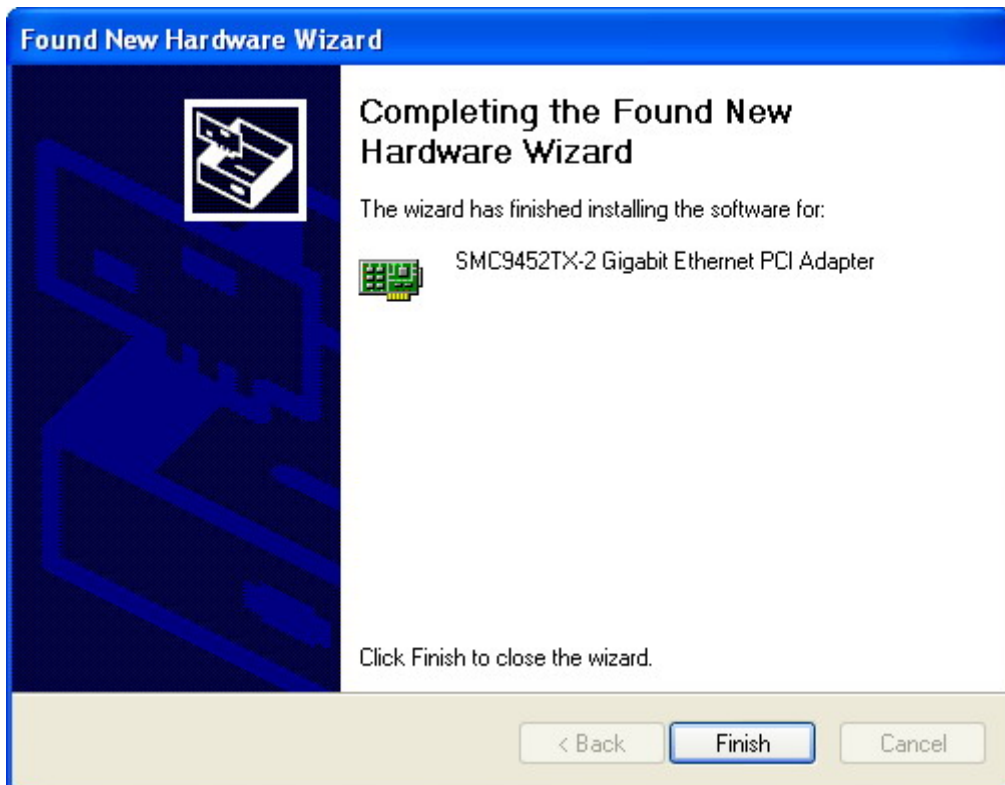


Figure 2-12

2.2.2 Update driver for XP

If the **Welcome to the Found New Hardware Wizard** screen does not appear after you insert the Adapter, you can follow the steps below to install the driver, and you can also **upgrade** the latest driver available on the CD-ROM in this way.

Step 1: Right-click **My Computer** icon on the computer and select **Properties** (show in Figure 2-14).

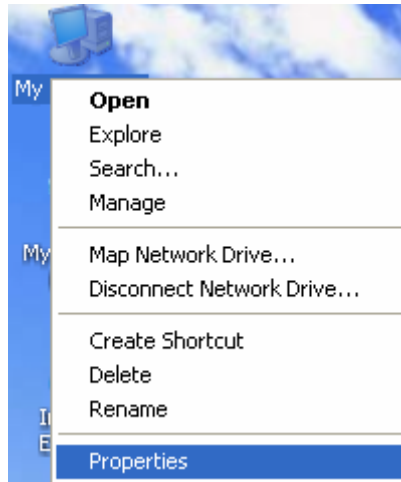


Figure 2-13

Step 2: Select **Hardware** and then **Device Manager** (shown in Figure 2-15).

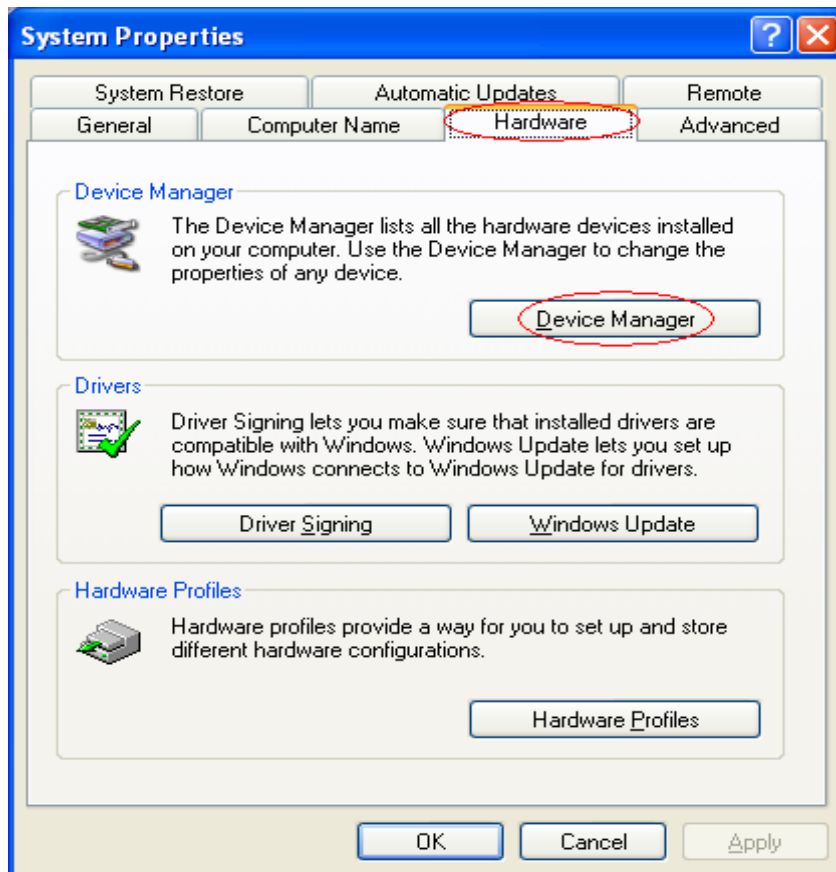


Figure 2-14

Step 3: Right-click **SMC9452TX-2 Gigabit PCI Ethernet Adapter**, then select **Update Driver...** in Figure 2-16. (Note: If the driver was installed exactly, you may see "Ethernet Controller" instead. Right-click on it.)

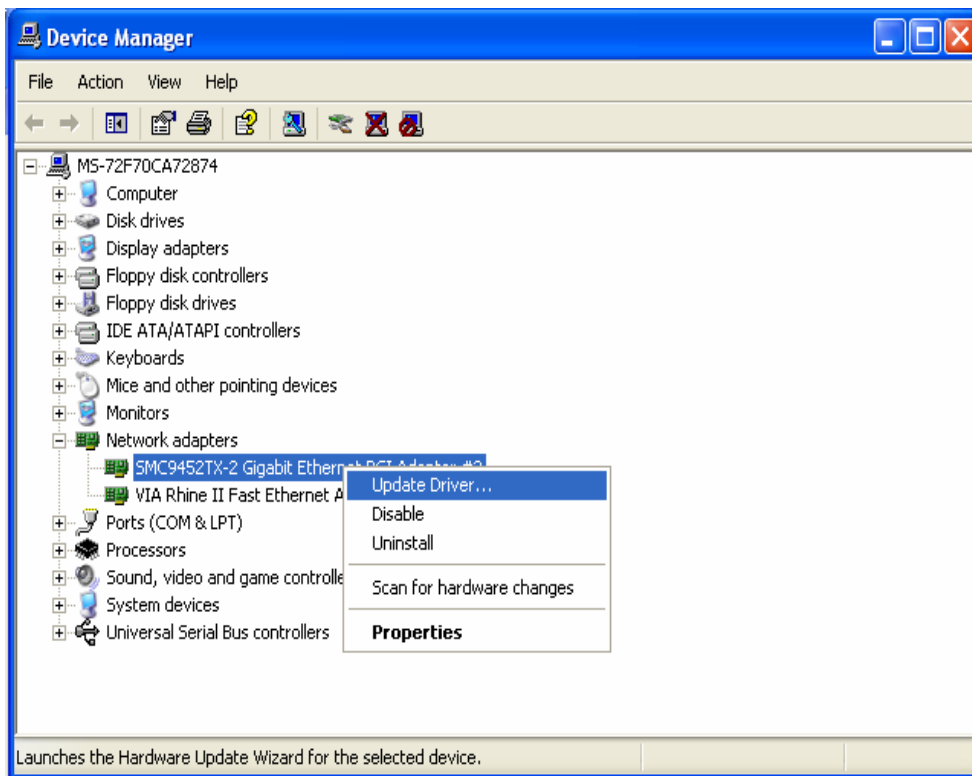


Figure 2-15

Step 4: The **Hardware Update Wizard** will appear, Click **No, not this time**, and then click **Next**.



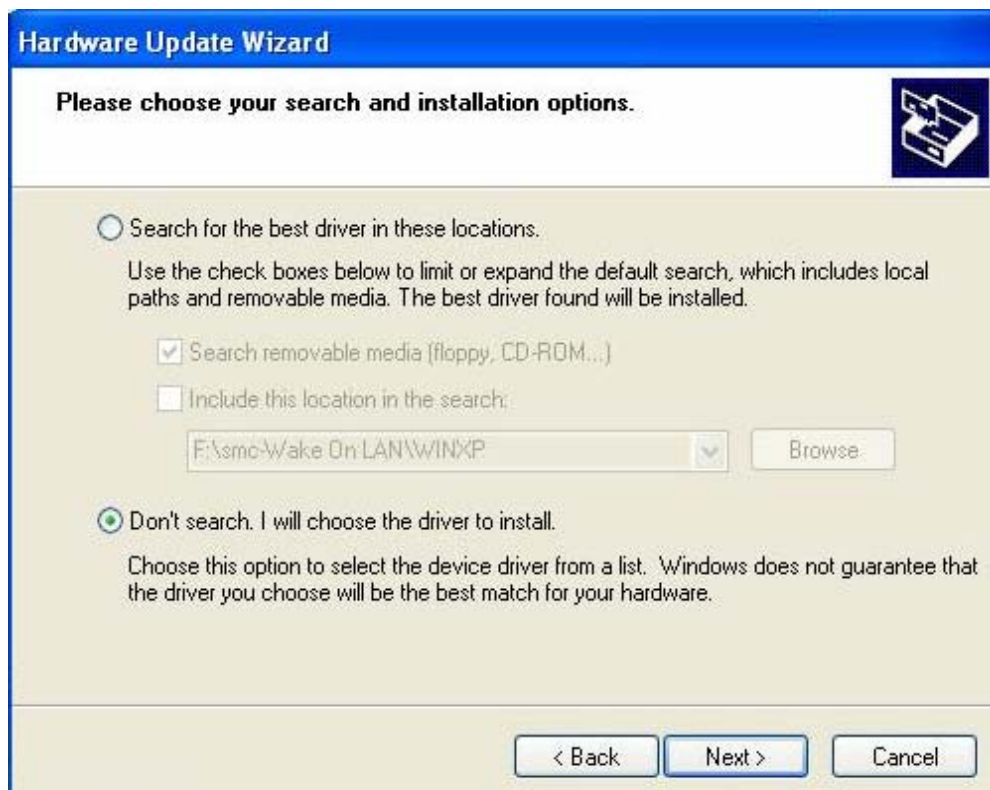
Figure 2-16

Step 5: Select **Install from a list or specific location (Advanced)** as shown in Figure 2-18, and then click **Next**.



Figure 2-18

Step 6: Select **Don't search. I will choose the driver to install** as shown below. Then click **Next**.



Step 7: Select the model of the Adapter as shown in Figure 2-20, then click **Next**.

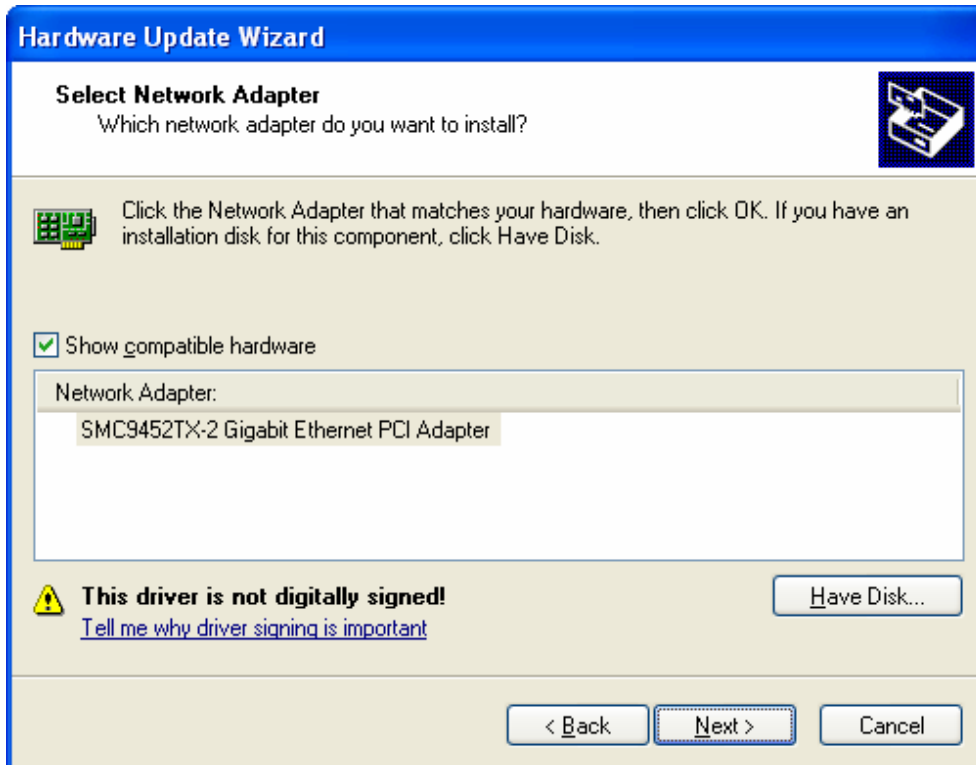


Figure 2-17

Step 8: After that, select **Browse...** to locate the driver in the next screen.

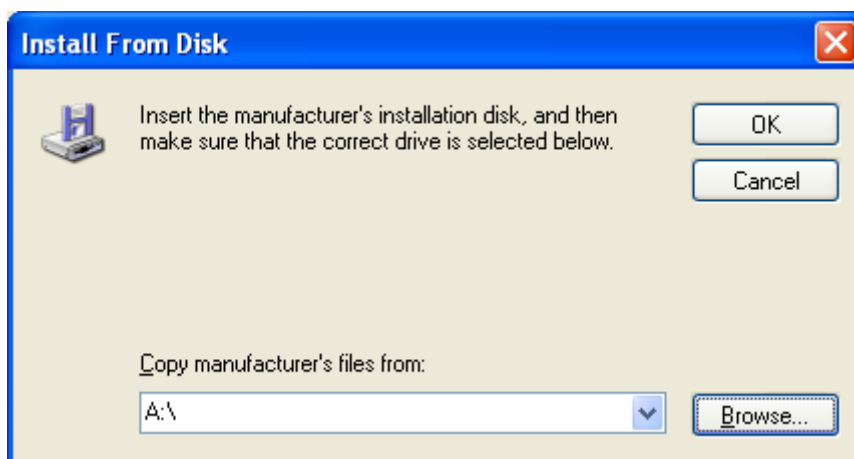


Figure 2-21

Step 9: Locate the appointed driver as shown in Figure 2-22, click **Open**.

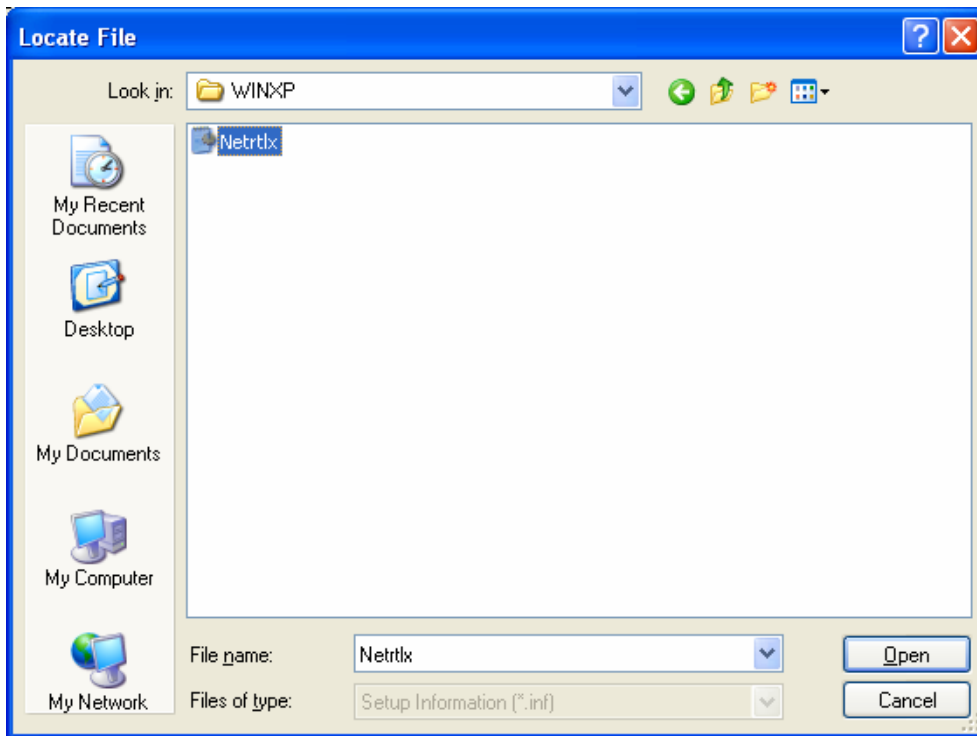


Figure 2-22

Step 10: After that, you will see the next screen, click **OK**.

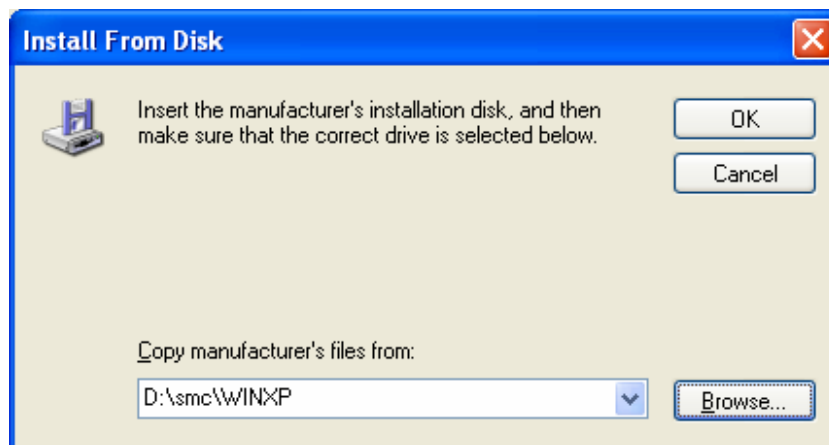


Figure 2-18

Note:

Assuming D is the letter of your CD-ROM drive.

Step 11: Select the model of the Card as shown in Figure 2-24, then click **Next**.

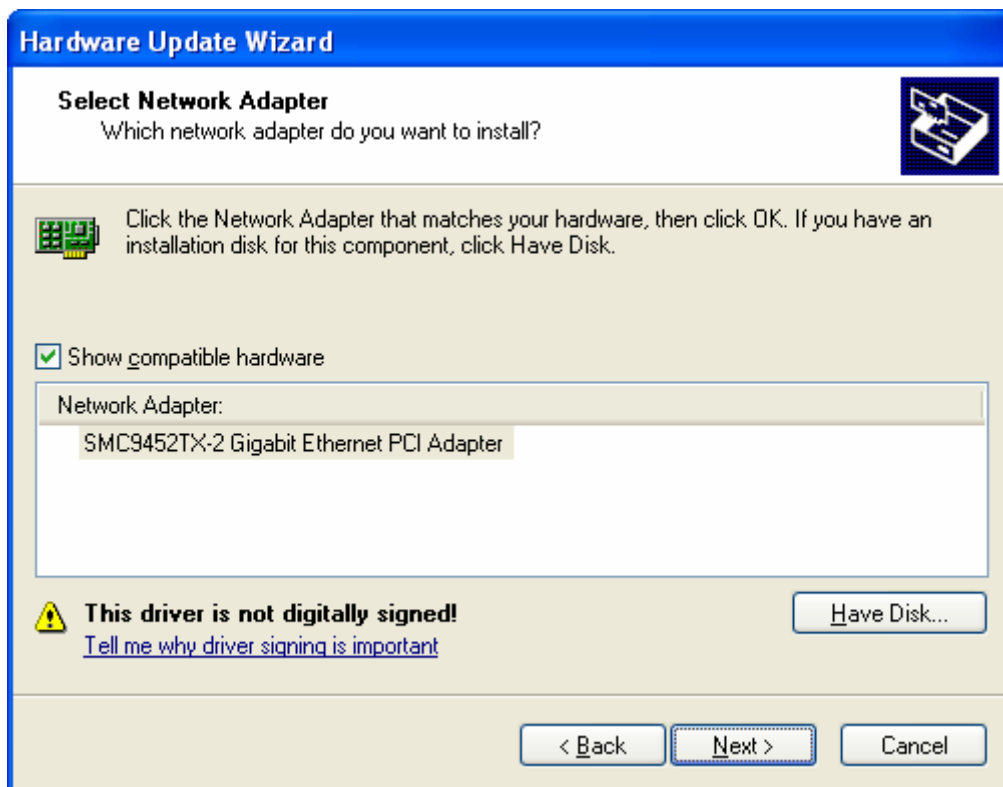


Figure 2-24

Step 12: After that, please wait few seconds for the wizard installing the software.

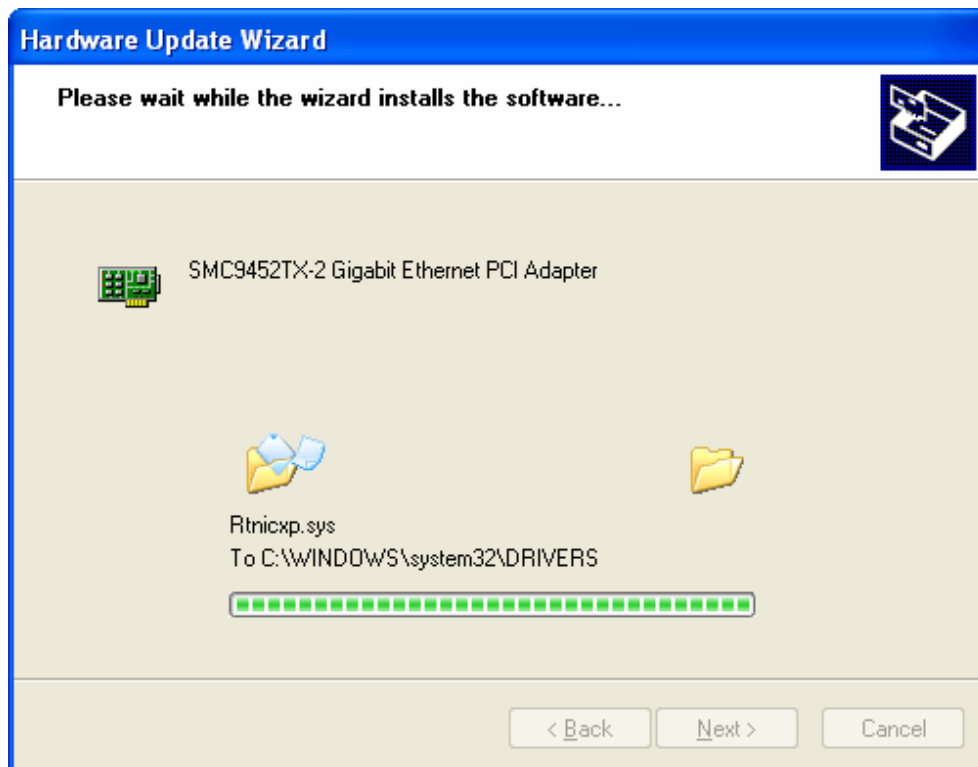


Figure 2-25

Note:

During the installation, a warning box about Windows Logo testing (shown in Figure 2-11) may pop up, please click **Continue Anyway** to continue the installation since our drivers have been tested thoroughly and are able to work with the operating system.



Figure 2-26

Step 13: Finally, click **Finish**. And the driver installation for Windows XP completes.

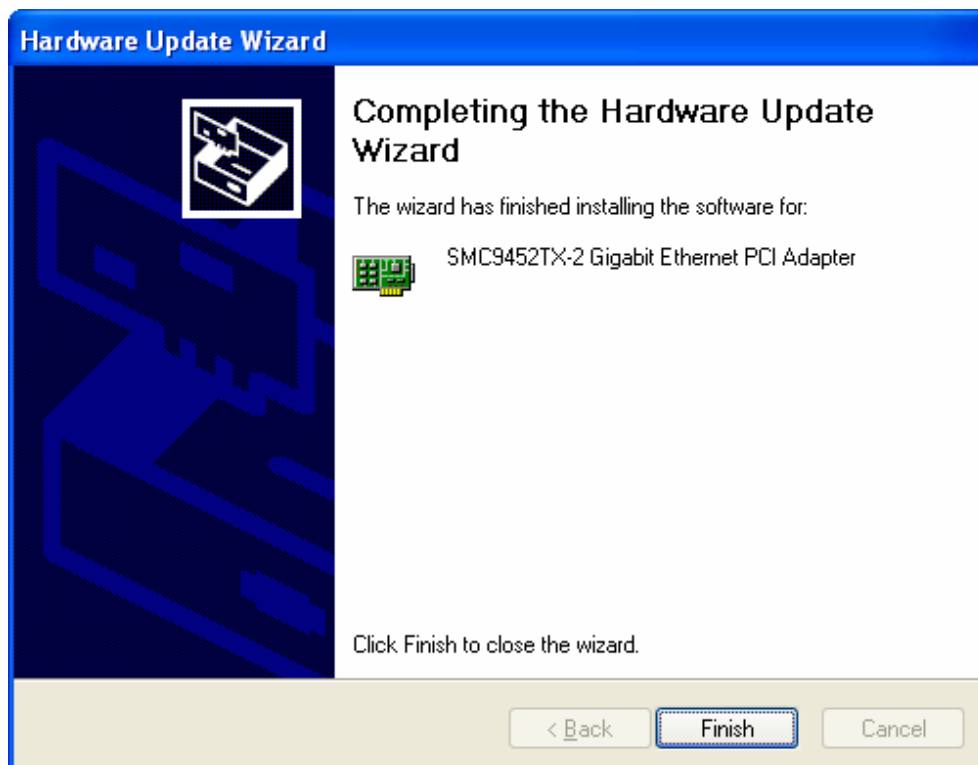


Figure 2-27

2.2.3 Update driver for Vista

step 1. Insert the Driver & Installation CD into your CD-ROM drive, right-click the **Computer** icon as shown in the Figure 2-28, select the **Properties**.



Figure 2-19

step 2. Select **Device Manager** as shown in Figure 2-29, then select **Continue** in the next screen.

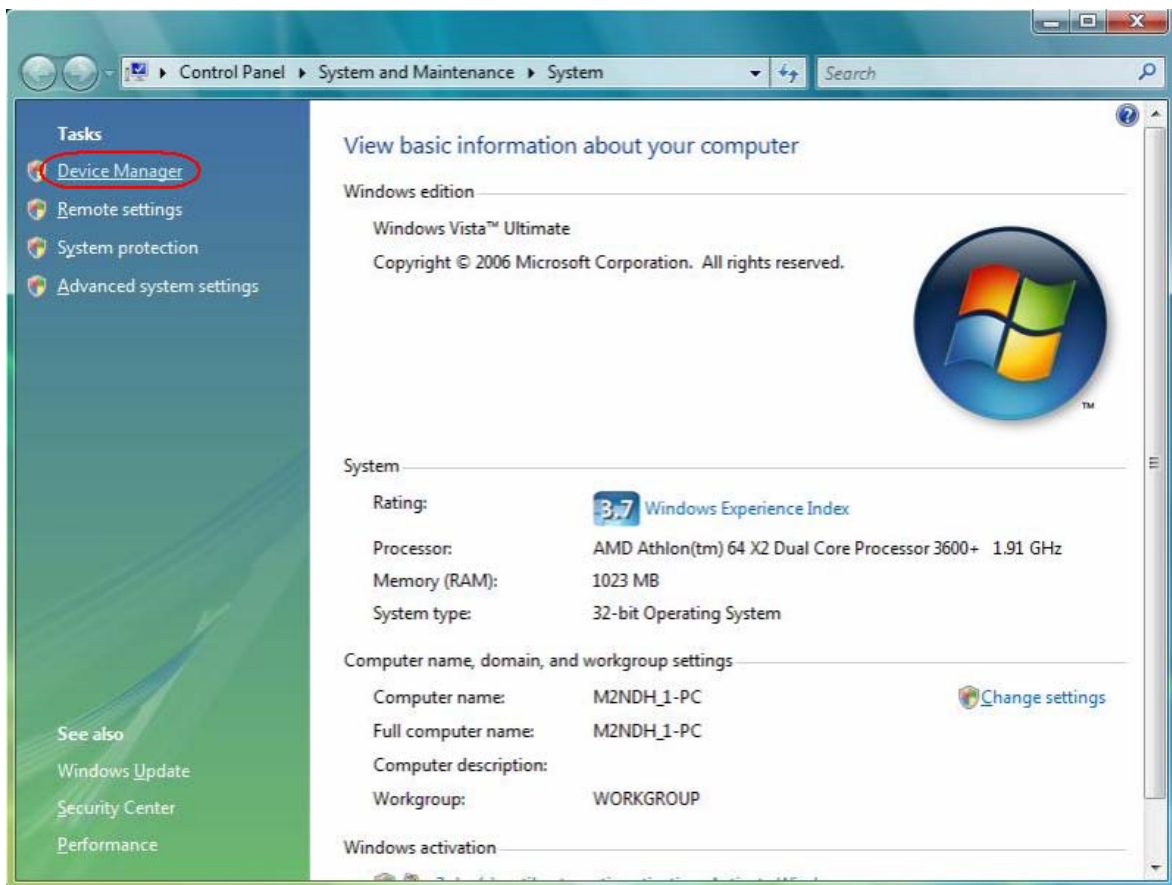


Figure 2-20

step 3. Right-click the adapter icon “Realtek RTL8169/8110 Family Gigabit Ethernet NIC”, and select “Update Driver Software...” to proceed.

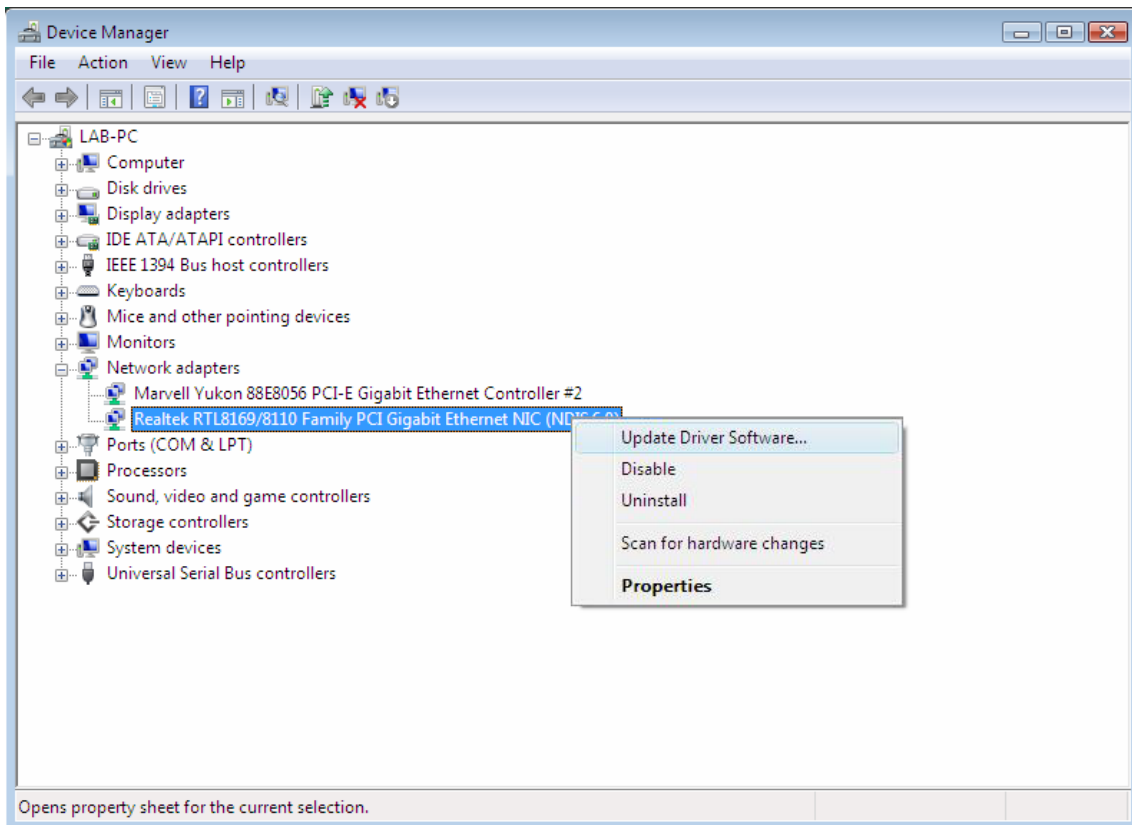


Figure 2-21

step 4. Select “Browse my computer for driver software” to install the software.

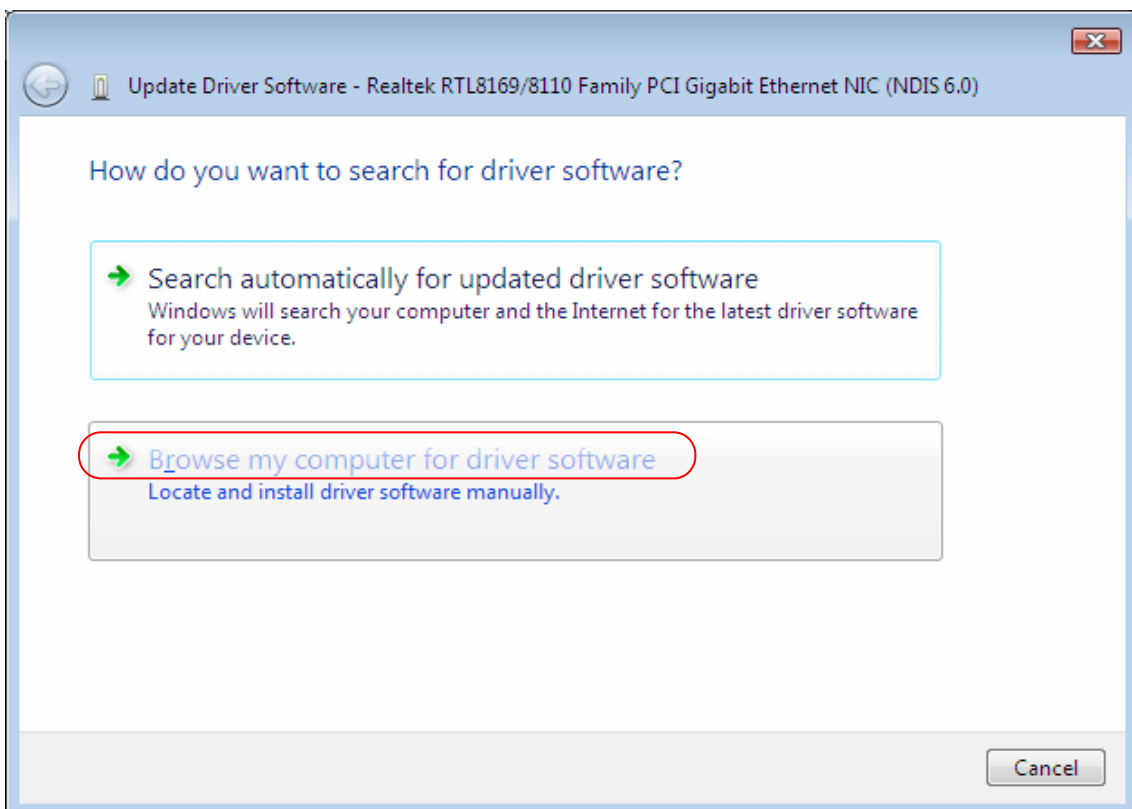


Figure 2-22

step 5. Click the “Let me pick from a list of device drivers on my computer” in the next screen.

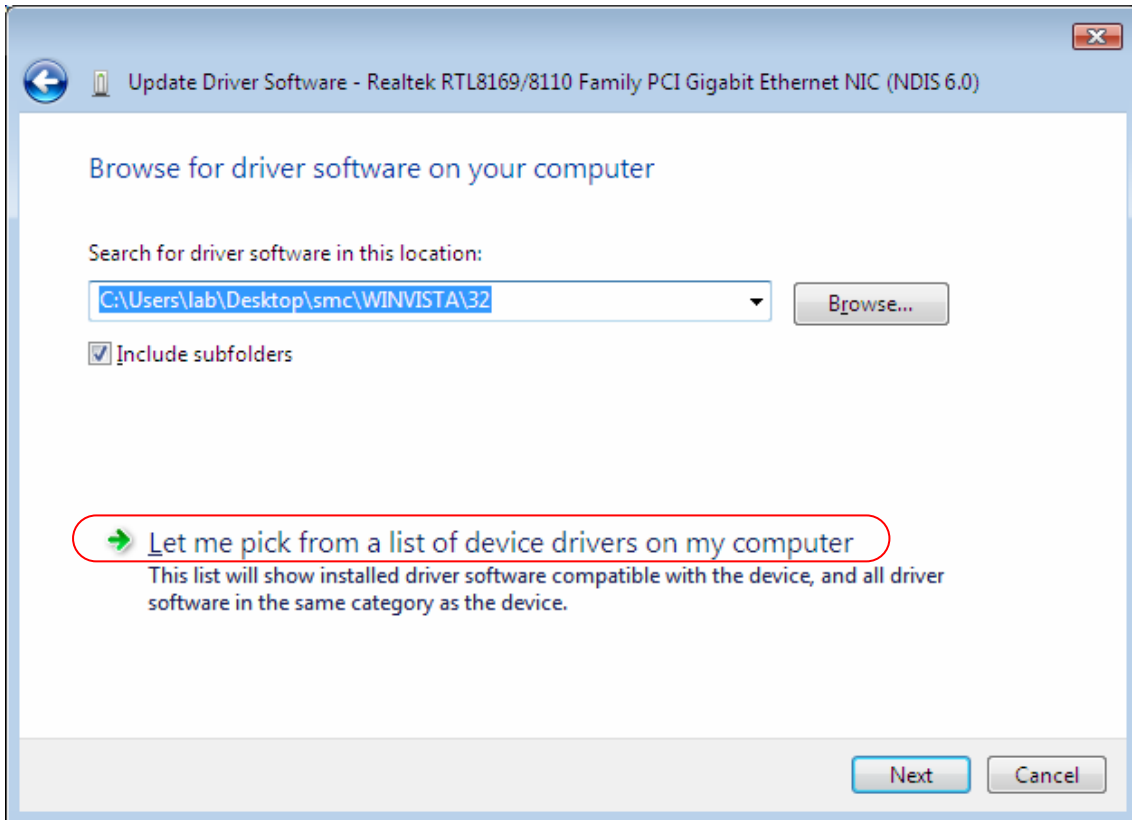


Figure 2-23

step 6. Click “Have Disk...” in the next screen (shown in Figure 2-23).

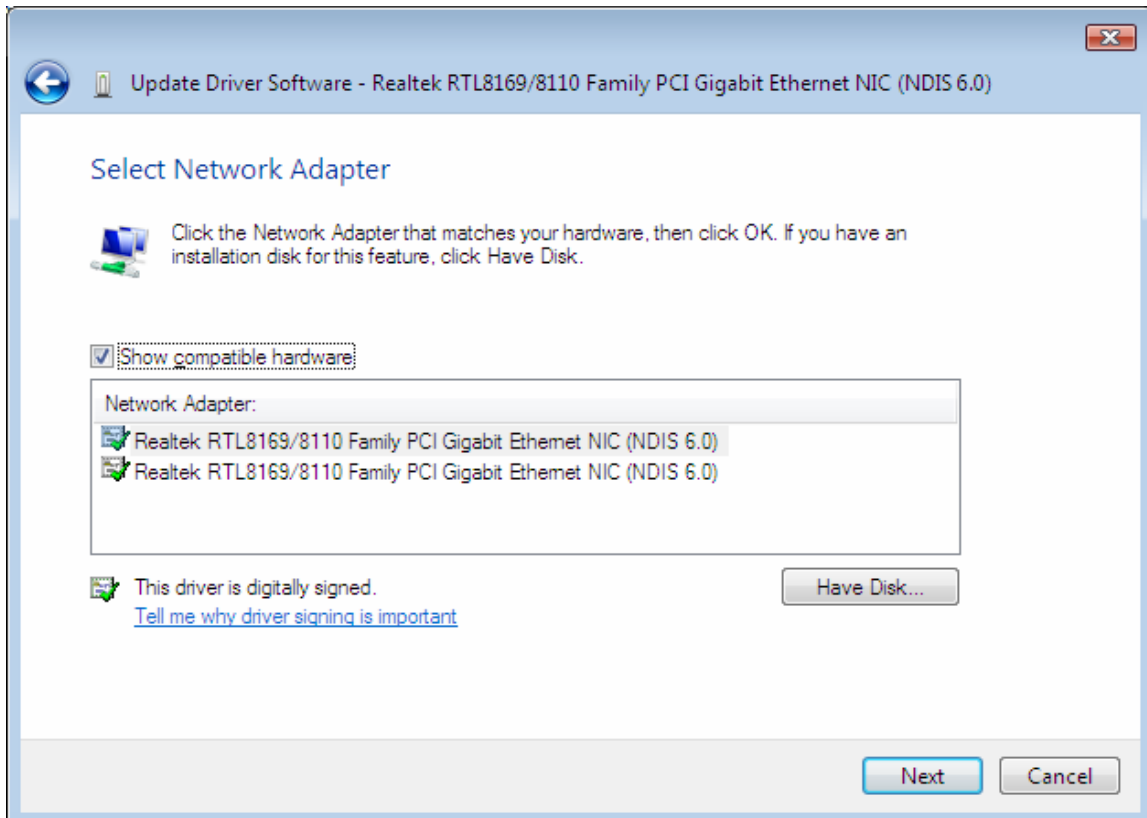


Figure 2-24

step 7. After that, select “**Browse...**” to locate the driver in the next screen.

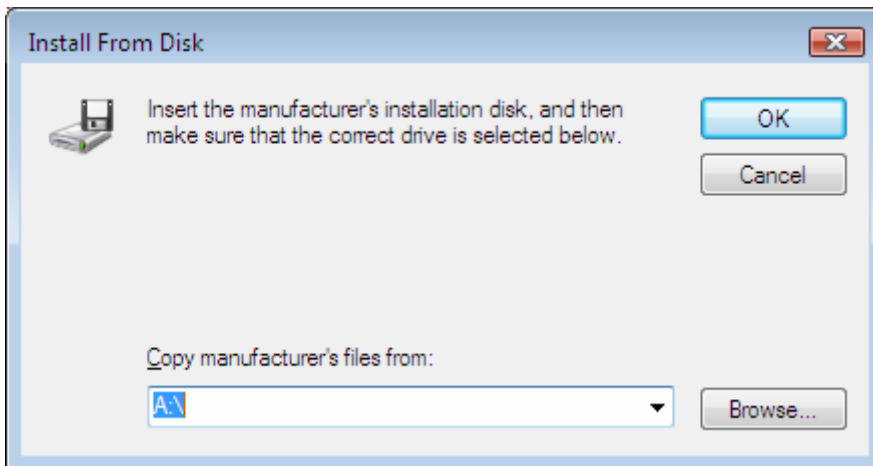


Figure 2-25

step 8. Locate the appointed driver as shown in Figure 2-35, click **Open**.

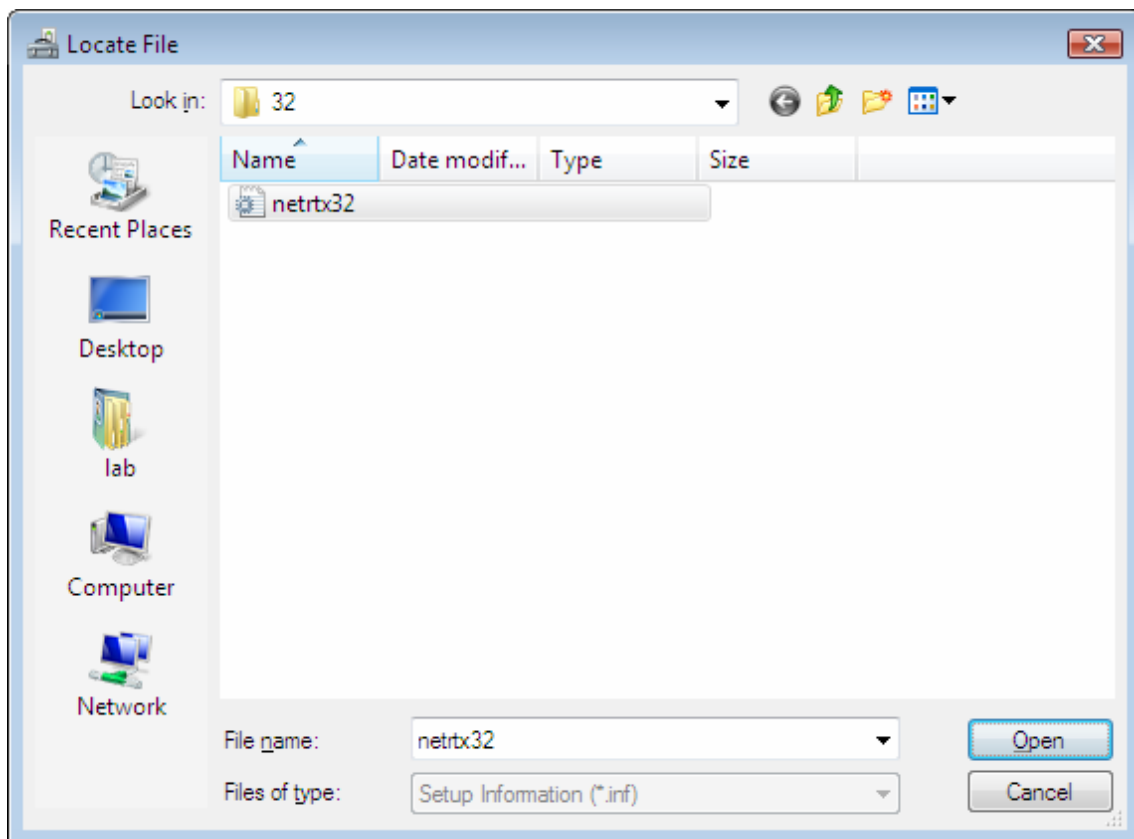


Figure 2-26

Note:

Vista X32 is designed for the Vista of 32bit, Vista X64 is designed for the Vista of 64bit, please select according as you need.

step 9. After that, you will see the next screen (shown in Figure 2-36), click **OK**.

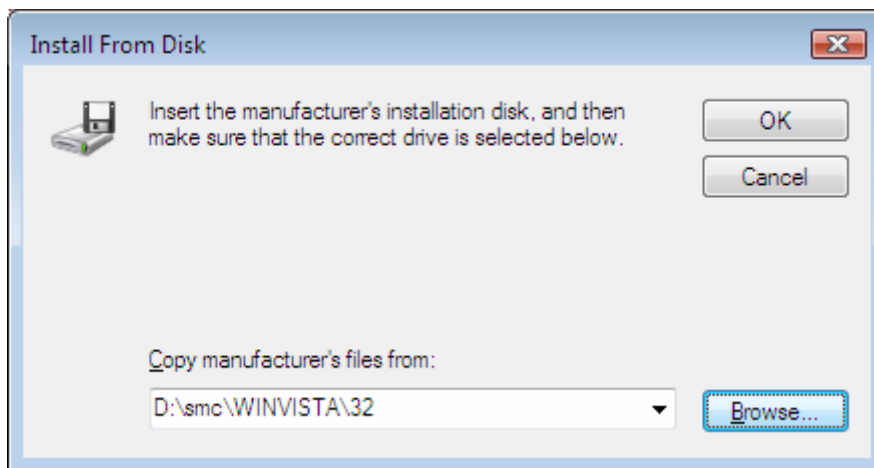


Figure 2-27

Note:

Assuming D is the letter of your CD-ROM drive.

step 10. Select the model of the Card as shown in Figure 2-37, then click **Next**.

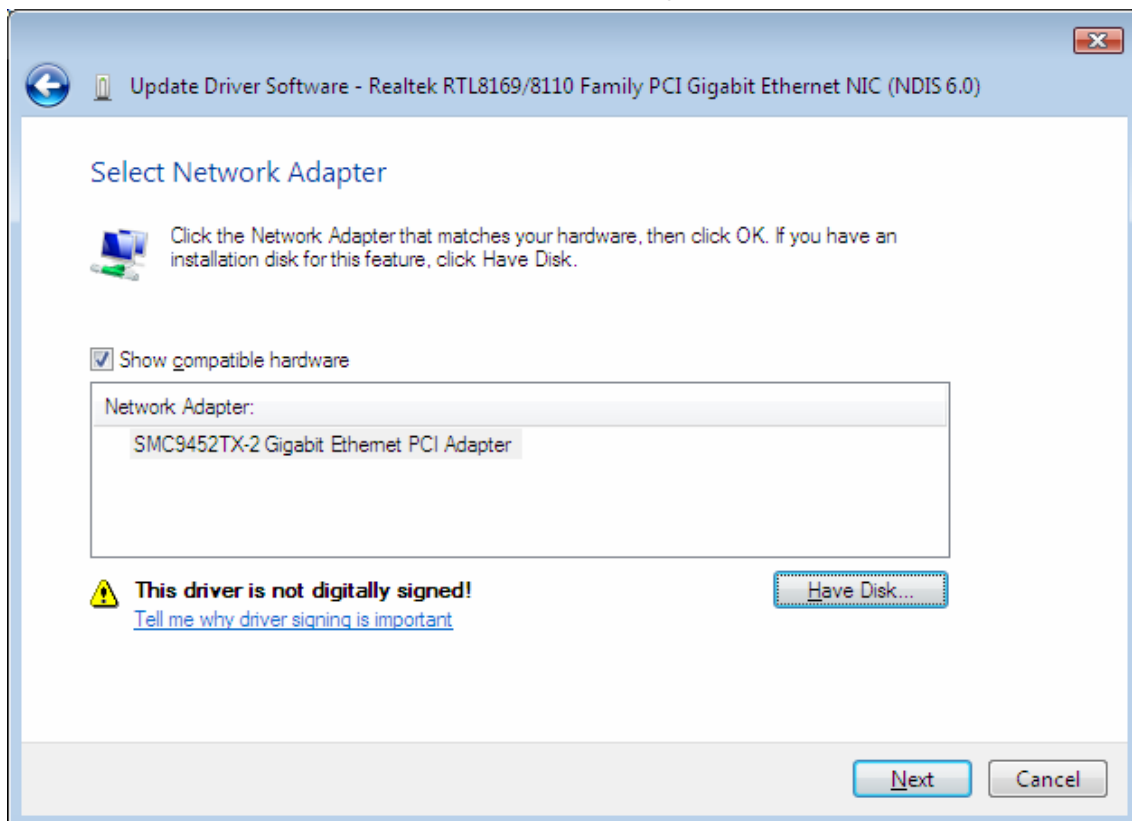


Figure 2-28

step 11. After that, the installation will proceed as shown in Figure 2-38.

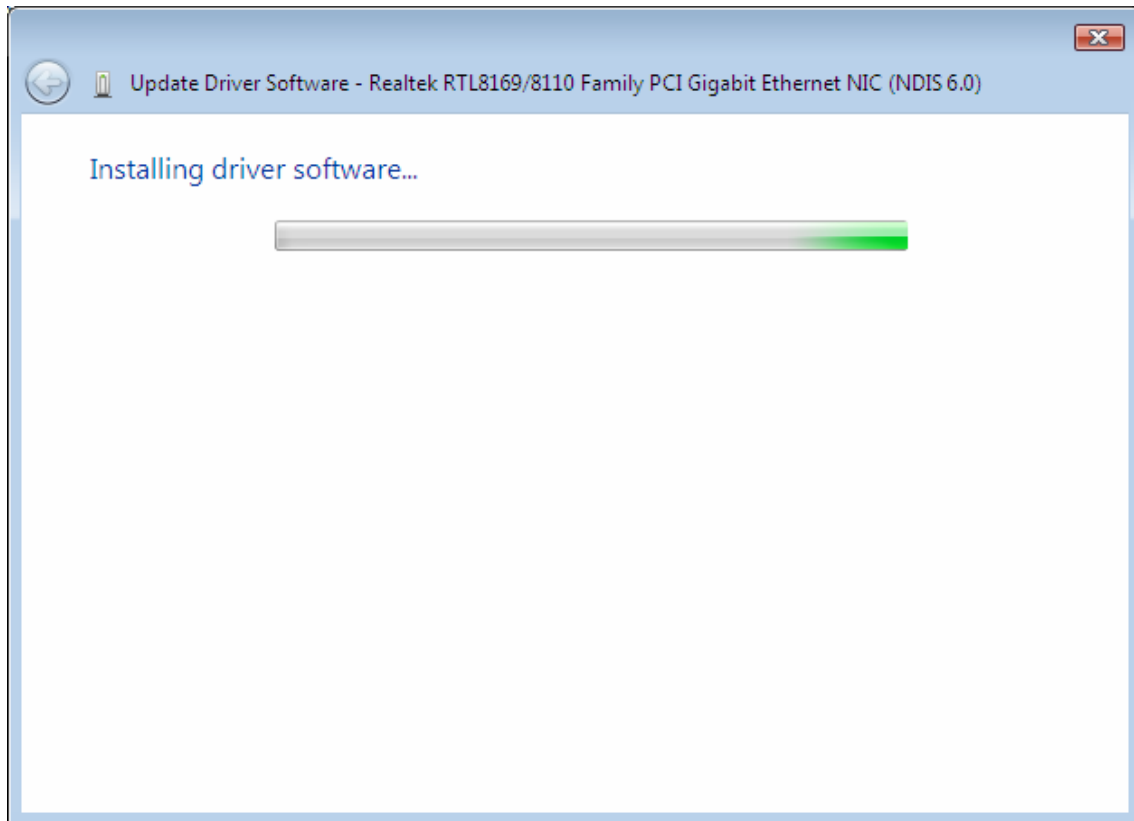


Figure 2-29

Note:

During the installation, you will see the warning box as shown in Figure 2-39, please select "Install this driver software anyway" to proceed.

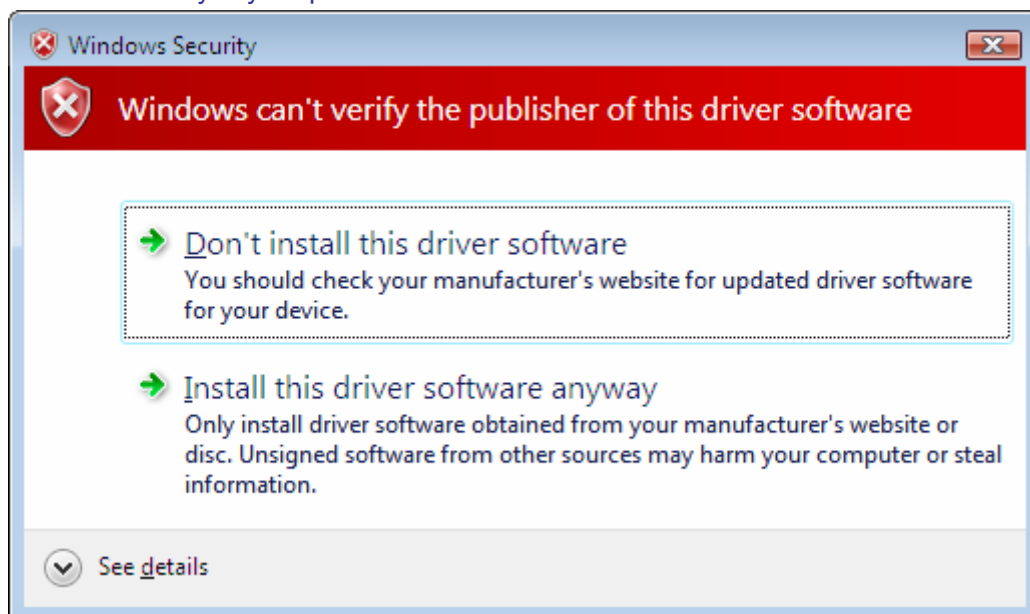


Figure 2-30

step 12. Finally, the installation will complete, you will see the next screen below, click Close to complete.

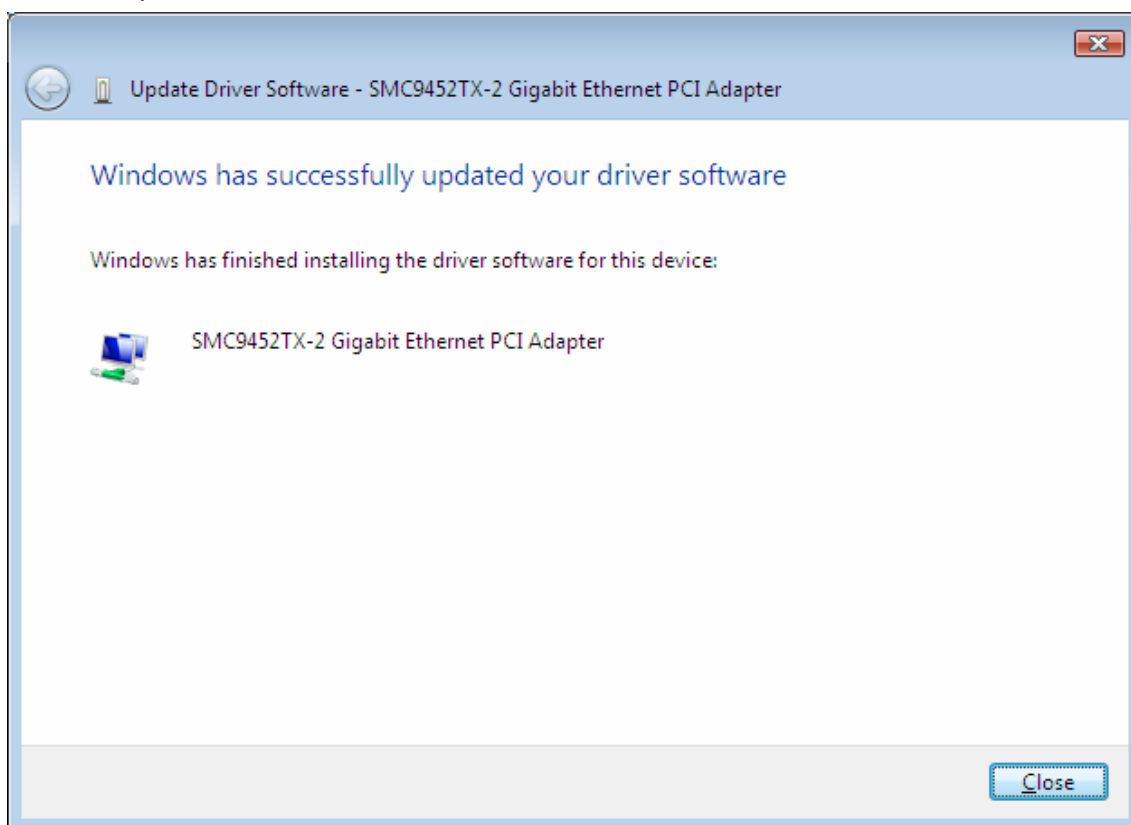


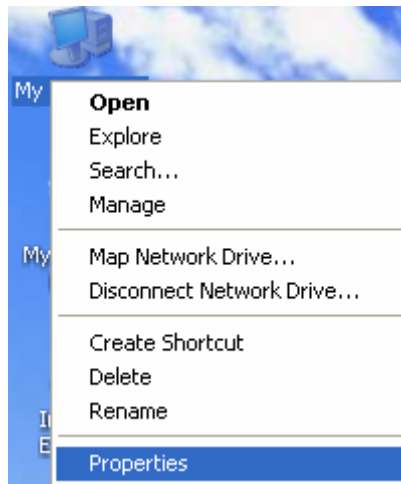
Figure 2-31

2.3 Enable Wake on LAN function

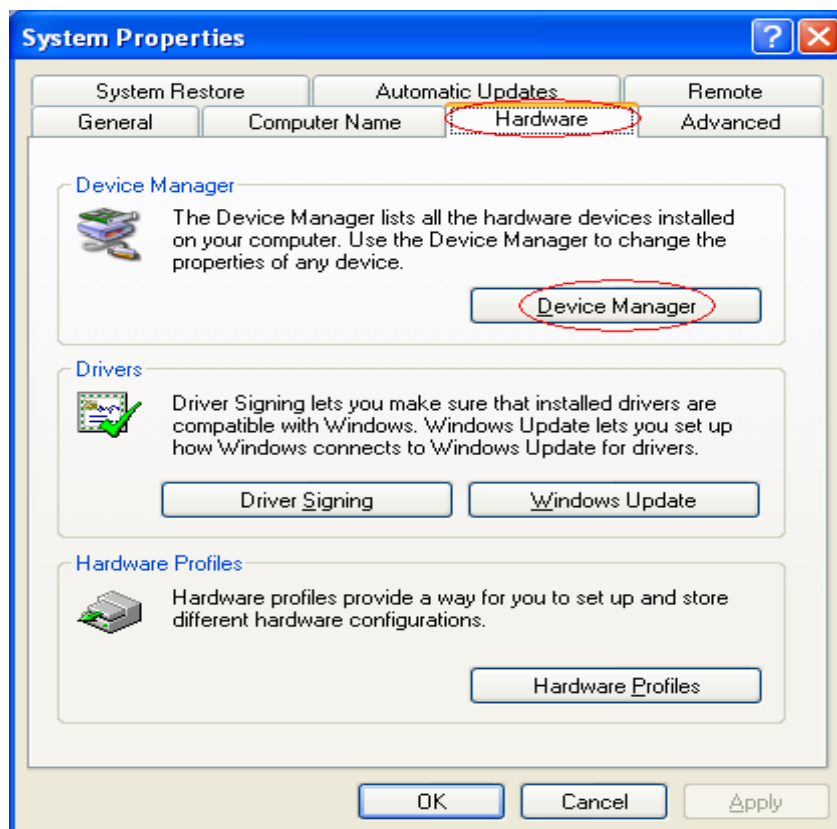
This function allows a remote station “wake” your computer when it is in Standby or Hibernate mode or after shutdown.

To enable WOL (take the configuration in Windows XP for example):

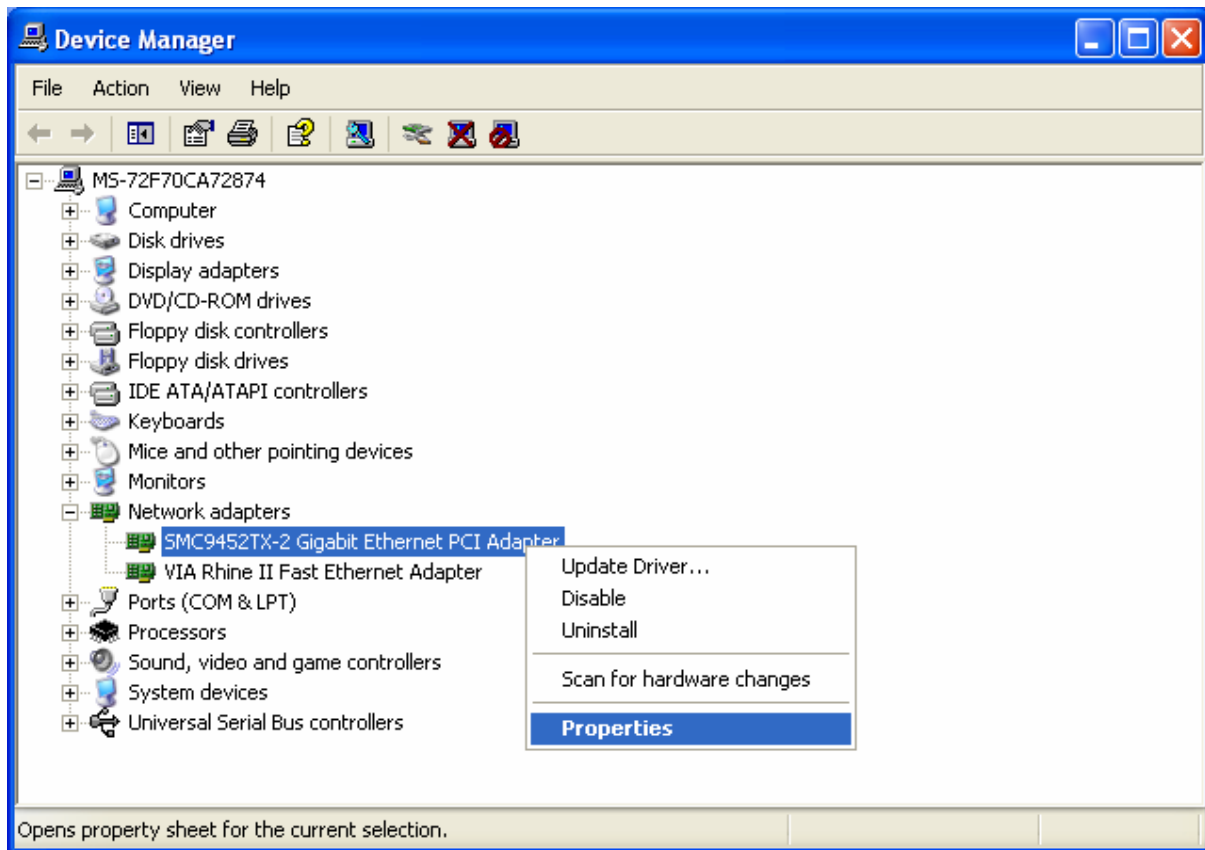
- a) Right click “**My Computer**” icon on the desktop and select “**Properties**”.



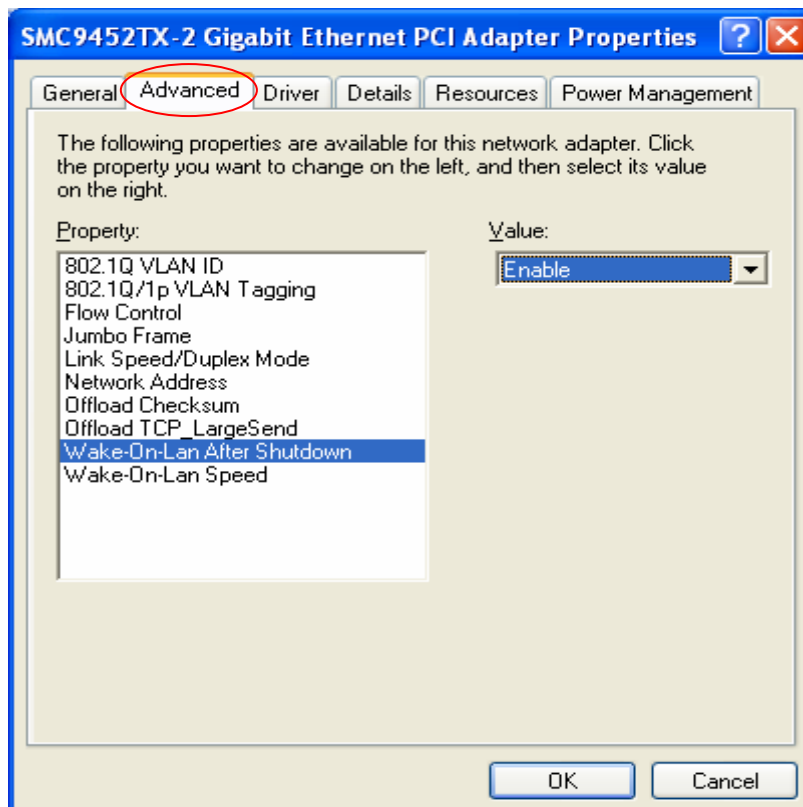
- b) Select “**Hardware**” and then “**Device Manager**” in the next screen.



- c) Right click “SMC9452TX-2 Gigabit Ethernet PCI Adapter”, and then select “Properties”



- d) Select the **Advance** title on the next advanced configure page, then highlight the **Wake-On-Lan After Shutdown** item and set the value as **Enable**.



 **Note:**

- 1) The name of this **Wake-On-Lan After Shutdown** function is system-dependent, and it may be located in a category heading titled such as “Power Management”. See your computer’s user guide for more information regarding the BIOS Setup utility and BIOS settings.
- 2) A Magic Packet Tool is needed on the PC to remotely wake up WoL enabled computer on Shutdown mode (which is not needed on Sleep, Standby or Hibernate mode). The Magic Packet Tool can be easily loaded down from the internet.

Appendix A: Specifications

Normal	
Interface	32-bit PCI
Standards	IEEE 802.3 10Base-T, IEEE 802.3u 100Base-TX, IEEE 802.ab 1000Base-T
Access Protocol	CSMA/CD
Connector	one 10/100/1000M Auto-Negotiation RJ45 port
Driver	Novell NetWare3.x, 4.x, 5.x, Windows 95, Windows 98, Windows 2000, Windows NT, Windows Me, Windows XP, Linux, Vista
Indicator	100M, 1000M
Media	10Base-T: Category 3 or above UTP/STP 100Base-TX: Category 5 UTP/STP (≤100m) 1000Base-T: Category 5 UTP/STP (≤100m)
Power	2.2W
Safety & Emission	FCC, CE

Environmental and Physical	
Temperature	Operating: 0°C~40°C (32°F~104°F)
	Storage: -40°C~85°C (-40°F~185°F)
Humidity	Operating.:10% - 90%, Non-condensing
	Storage: 5% - 90%, Non-condensing

TECHNICAL SUPPORT

From U.S.A. and Canada (24 hours a day, 7 days a week)
Phn: (800) SMC-4-YOU / (949) 679-8000
Fax: (949) 679-1481

English: Technical Support information available at www.smc.com

English(For Asia Pacific): Technical Support information available at
www.smc-asia.com

Deutsch: Technischer Support und weitere Information unter www.smc.com

Español: En www.smc.com Ud. podrá encontrar la información relativa a servicios de soporte técnico

Français: Informations Support Technique sur www.smc.com

Português: Informações sobre Suporte Técnico em www.smc.com

Italiano: Le informazioni di supporto tecnico sono disponibili su www.smc.com

Svenska: Information om Teknisk Support finns tillgängligt på www.smc.com

Nederlands: Technische ondersteuningsinformatie beschikbaar op www.smc.com

Polski: Informacje o wsparciu technicznym są dostępne na www.smc.com

Čeština: Technická podpora je dostupná na www.smc.com

Magyar: Műszaki támogatás információ elérhető -on www.smc.com

简体中文: 技术支持讯息可通过www.smc-prc.com查询

繁體中文: 產品技術支援與服務請上 www.smcnetworks.com.tw

ไทย: สามารถหาข้อมูลทางด้านเทคนิคได้ที่ www.smc-asia.com

한국어: 기술지원관련 정보는 www.smc-asia.com을 참고하시기 바랍니다

INTERNET

E-mail address: techsupport@smc.com

Driver updates

http://www.smc.com/index.cfm?action=tech_support_drivers_downloads

World Wide Web

<http://www.smc.com/>



SMC9452TX-2