

Pioneer

DVD/CD WRITER

DVR-XD11T

DVD
MULTI
RECORDER

DVD
R/RW/RAM

RW
DVD+R DL

RW High Speed
DVD+ReWritable

COMPACT
disc Ultra Speed
ReWritable

Operating Instructions

Thank you for buying this Pioneer product. Before using the drive, read all warnings, cautions, notices and other important safety information contained in these Operating Instructions. Please read the entire manual before using this drive as it contains important information, such as regulatory data, software license agreement(s), product registration details, service instructions and guidelines.

WARNING

This equipment is not waterproof. To prevent a fire or shock hazard, do not place any container filled with liquid near this equipment (such as a vase or flower pot) or expose it to dripping, splashing, rain or moisture.

D3-4-2-1-3_B_En

Operating Environment

Operating environment temperature and humidity:
+5 °C to +35 °C (+41 °F to +95 °F); less than 85 %RH (cooling vents not blocked)

Do not install this unit in a poorly ventilated area, or in locations exposed to high humidity or direct sunlight (or strong artificial light)

D3-4-2-1-7c*_A1_En

Precautions Regarding Use

- Pioneer may not be held liable for the loss of any data or any other direct or indirect damage suffered as the result of the use or breakdown of this product. It is strongly recommended to regularly back up all critical data.
- Care must be taken not to infringe copyright restrictions under the laws of each country. If this device is used to record copyrighted materials, approval must be obtained from the respective copyright holders. The recording of copyrighted materials without the express approval of the respective copyright holders may result in legal penalties. Pioneer disclaims any and all responsibility for any legal damages resulting from the use of this device in the unauthorized copying of copyrighted materials.
- All names of corporations, products, and systems listed herein, even when the (™) or (®) symbols are omitted, are considered the registered trademarks of the respective owners.

DANGER – VISIBLE AND INVISIBLE LASER RADIATION WHEN OPEN. AVOID DIRECT EXPOSURE TO BEAM.

IMPORTANT



The lightning flash with arrowhead symbol, within an equilateral triangle, is intended to alert the user to the presence of uninsulated "dangerous voltage" within the product's enclosure that may be of sufficient magnitude to constitute a risk of electric shock to persons.

CAUTION

**RISK OF ELECTRIC SHOCK
DO NOT OPEN**

CAUTION:

TO PREVENT THE RISK OF ELECTRIC SHOCK, DO NOT REMOVE COVER (OR BACK). NO USER-SERVICEABLE PARTS INSIDE. REFER SERVICING TO QUALIFIED SERVICE PERSONNEL.



The exclamation point within an equilateral triangle is intended to alert the user to the presence of important operating and maintenance (servicing) instructions in the literature accompanying the appliance.

D3-4-2-1-1_A1_En

CAUTION

This product is a class 1 laser product classified under the Safety of laser products, IEC 60825-1:2007, but this product contains a laser diode higher than Class 1. To ensure continued safety, do not remove any covers or attempt to gain access to the inside of the product. Refer all servicing to qualified personnel.

The following caution label appears on your unit.

Location: bottom of the unit

CLASS 1 LASER PRODUCT

CAUTION CLASS 3B VISIBLE AND INVISIBLE LASER RADIATION WHEN OPEN, AVOID EXPOSURE TO THE BEAM.

ATTENTION RADIATIONS LASER VISIBLES ET INVISIBLES DE CLASSE 3B QUAND OUVERT. EVITEZ TOUT EXPOSITION AU FUSIL.

ADVARSEL KLASSE 3B SYNLIG OG USYNLIG LASERSTRÅLING VED ÅBNING. UNDGÅ UDSÆTTELSE FOR STRÅLING.

VARO! AVATTAESSÄ OLET ALTIHINA NÄKYVÄLLE JA NÄKYMÄTTÖMÄLLE LUKOKAN 3B LASERSÄTELYLLE. ÄLÄ KATSO SÄTEESEEN.

VARNING KLASS 3B SYNLIG OCH OSYNLIG LASERSTRÅLNING NÄR DENNA DEL ÄR ÖPPNAD. UNDVIK ATT UTSÄTTA DIG FÖR STRÅLEN. BEI GÖFFNETER ABDECKUNG IST SICHTBARE UND UNSICHTBARE LASERSTRÄHLUNG DER KLASSE 3B IM GERÄTEINNEREN VORHANDEN. NICHT DEN LASERSTRAHL AUSSETZEN!

VORSICHT PRECAUCIÓN CUANDO SE ABRE HAY RADIACIÓN LASER DE CLASE 3B VISIBLE E INVISIBLE. EVITE LA EXPOSICIÓN A LOS RAYOS LASER.

注意 ここを開くと CLASS 3B の可視レーザー光及び不可視レーザー光が出ます。ビームを直接見たり、触れたりしないこと。

D58-5-2-2b*_A1_En

CAUTION: USE OF CONTROLS OR ADJUSTMENTS OR PERFORMANCE OF PROCEDURES OTHER THAN THOSE SPECIFIED HEREIN MAY RESULT IN HAZARDOUS RADIATION EXPOSURE.

CAUTION: THE USE OF OPTICAL INSTRUMENTS WITH THIS PRODUCT WILL INCREASE EYE HAZARD.

D58-5-1-2a_A1_En

For PLUGGABLE EQUIPMENT, the socket-outlet shall be installed near the equipment and shall be easily accessible.

IMPORTANT NOTICE

RECORD THE MODEL NUMBER AND SERIAL NUMBERS OF THIS EQUIPMENT BELOW. THE NUMBERS ARE ON THE BOTTOM.

MODEL NO. DVR-XD11T

SERIAL NO. _____

KEEP THESE NUMBERS FOR FUTURE USE.

D1-4-2-6-2*_A1_En

Machine Noise Information Regulation 3.
GPSGV: The highest sound-pressure level is 70 dB(A) or less in accordance EN ISO 7779.

Information to User

Alterations or modifications carried out without appropriate authorization may invalidate the user's right to operate the equipment.

D8-10-2_A1_En

CAUTION

This product satisfies EMC regulations when shielded cables and connectors are used to connect the unit to other equipment. To prevent electromagnetic interference with electric appliances such as radios and televisions, use shielded cables and connectors for connections.

 is a trademark of DVD Format/Logo Licensing Corporation.

AFTER-SALES SERVICE FOR PIONEER PRODUCTS

Please contact the dealer or distributor from where you purchased the product for its after-sales service (including warranty conditions) or any other information. In case the necessary information is not available, please contact the Pioneer's subsidiaries (regional service headquarters) listed below:

PLEASE DO NOT SHIP YOUR PRODUCT TO THE COMPANIES at the addresses listed below for repair without advance contact, for these companies are not repair locations.

PIONEER HIGH FIDELITY TAIWAN CO., LTD.
8F., No.407, Ruiguang Rd., Neihu Dist., Taipei City 114, Taiwan
(R.O.C)

S022_A_En



If you want to dispose this product, do not mix it with general household waste. There is a separate collection system for used electronic products in accordance with legislation that requires proper treatment, recovery and recycling.

Private households in the member states of the EU, in Switzerland and Norway may return their used electronic products free of charge to designated collection facilities or to a retailer (if you purchase a similar new one).

For countries not mentioned above, please contact your local authorities for the correct method of disposal.

By doing so you will ensure that your disposed product undergoes the necessary treatment, recovery and recycling and thus prevent potential negative effects on the environment and human health.

K058b_A1_En

Safety instructions

To ensure your personal safety and to maximize the full operating potential of your unit, read and follow these safety instructions.

Read & Retain Instructions – Read all operating and user information provided with this drive.

Cleaning – Use a damp cloth to clean the exterior housing. Avoid using any fluids including liquid, aerosol or alcohol-based cleaning products.

Water or Moisture – Avoid operating or locating this drive near water or other sources of fluid.

Installation – Do not place this product on an unstable cart, stand, or table. The product may fall and be seriously damaged.

Ventilation – Slots and openings in the chassis are for cooling and proper operation of the unit. Do NOT block or cover the openings. Do NOT place this unit on a bed, rug, etc. as this can block the openings. This unit should not be placed in a built-in installation unless properly ventilated.

Operation – Avoid moving, lifting or reorienting this drive while a disc is rotating inside.

Environment – Avoid installing this drive in a location with exposure to large quantities of dust, high temperatures, high humidity, or subject to excessive vibrations or shocks.

Power Sources – Operate this drive only from the recommended power sources. If you are unsure of the power source, consult an authorized Pioneer representative.

Power-Cord Protection – When unplugging the unit, pull on the plug – not on the cord. Do not handle the cord or plug with wet hands; doing so could cause an electric short or shock. Do not allow anything to pinch or rest on the power cord and do not place in a walkway.

Power – Turn OFF the system before installing this or any other hardware device.

Overloading – Avoid connecting too many devices to a single wall socket or power source as this can cause fires or short circuits.

Object & Liquid Entry – Never push inappropriate objects in to the device. Avoid spilling any liquids in to or on the outside of the drive.

Condensation – Moisture can form in the operating section of the product if the drive is taken from cool surroundings to a room with a warmer temperature. Let the drive stand for one to two hours in the new location before turning it ON.

Servicing – Opening or removing the cover exposes you to possible electrical shock or other danger. Contact a Pioneer authorized service representative for repairing this drive (refer to the enclosed Service & Support Card).

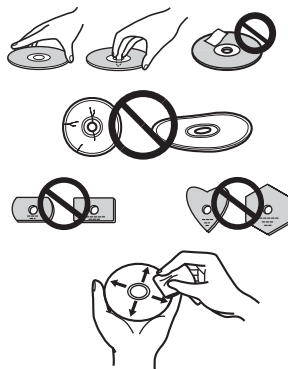
Damage Requiring Service – Unplug the unit and refer servicing to qualified service personnel in the following situations:

- When the power cord, plug, or chassis is damaged.
- If liquid has been spilled, or objects have fallen into the video product.
- If the product has been exposed to rain or water.
- If the product does not operate normally when the operating instructions are followed. Adjust only those controls that are covered by the operating instructions. Improper adjustment of other controls may result in damage and can require extensive work by a qualified technician to restore the unit to its normal operation.
- When the product exhibits a distinct change in performance – this indicates a need for service.

About DualDisc Playback – DualDisc is a two-sided disc with one side containing DVD video/audio/etc. content and the opposite side containing non-DVD content such as digital audio material. The non-DVD audio side is not compliant with the CD Audio Specification; therefore, may not play. The DVD side of DualDisc media plays in this unit. For more details about the DualDisc specification, please refer to the disc manufacturer or your retailer.

- Avoid touching or scratching the signal surface (shiny side) of the disc.
- Hold the disc by the edges or by the center hole and one edge.
- Do not affix paper or labels to the disc.
- Discard warped or cracked discs as they may cause damage to the drive.
- Avoid specially shaped discs such as hearts or polygons.
- Remove dust or lint from the disc with a soft cloth by wiping from the inside to the outside edge rather than in a circular motion.
- Do not use record-cleaning or anti-static agents as the solutions may cause damage to a disc.

Always be sure to store your discs in proper disc storage cases when not in use, and always be sure to check for dirt or dust on discs (especially on the recording side) before use.



Note

Some discs may not be playable due to different recording formats or the physical condition of the disc at the time of recording or playback.

Features

Write Speed (▲ZCLV, ★CAV, ■PCAV)

DVD-R	2X, 4X■, 6X■, 8X★
DVD-R DL	2X, 4X■, 6X■
DVD-RW	2X, 4X▲, 6X▲
DVD+R	2.4X, 4X■, 6X■, 8X★
DVD+R DL	2.4X, 4X■, 6X■
DVD+RW	2.4X, 4X▲, 6X▲, 8X▲
DVD-RAM	2X, 3X, 5X▲
CD-R	10X, 16X▲, 20X▲, 24X▲
CD-RW	4X, 10X, 16X▲, 20X▲, 24X▲

Maximum Read Speed (▲ZCLV, ★CAV)

DVD-ROM (single)	8X★	DVD-ROM (dual)	8X★
DVD-R, DVD+R	8X★	DVD-R DL, DVD+R DL	8X★
DVD-RW, DVD+RW	8X★	DVD-RAM	5X▲
CD-ROM, CD-R	24X★	CD-RW	24X★

Buffer Memory Size Interface

**1 Mbyte (Read/Write)
USB 2.0**

Disc Format

- CD-DA
- Mixed-CD
- CD-ROM Mode 1
- CD-ROM XA Mode 2 [form 1, form 2]
- KODAK Photo CD Single and Multi-session
- CD Extra [CD PLUS]
- Video CD
- CD text (Read/Write)
- CD-R (Read/Write)
- CD-RW [HS/US/US+] (Read/Write)
- DVD-ROM [Single/Dual]
- DVD-Video [Single/Dual]
- DVD-R Ver.2.0 & 2.1 for General (Read/Write)
- DVD-R DL Ver.3.0 (Read/Write)
- DVD-RW Ver.1.0 & 1.1 & 1.2 (Read/Write)
- DVD+R Ver.1.3 (Read/Write)
- DVD+R DL Ver.1.0 & 1.1 (Read/Write)
- DVD+RW Ver.1.3 (Read/Write)
- DVD+RW high speed Ver.1.0 (Read/Write)
- DVD-RAM Ver.2.0 & 2.1 & 2.2 [Non-cartridge] (Read/Write)

RAM media is supported only reading.



Note

- A specific application software is necessary to write the formats listed above.
- Supported media required for specific DVD and CD writing speeds.
- Average writing speed may decrease when multiple discs are written during the same session.

Interface

Front/Top view

1 Power/Busy Indicator

Operation status is indicated as follows:

During Power ON: Lights dimly

During reading/writing: Lights

During disc cover open: Lights

2 OPEN Button

Press to open the disc cover.

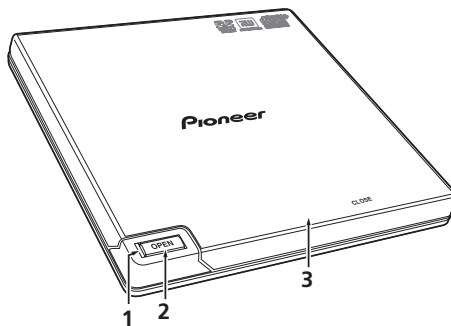
3 Disc Cover

Press the OPEN button to open the disc cover

then place a CD or DVD disc onto the tray with the label facing up. Close the disc cover gently.

Do not manually force open the disc cover.

Use the Forced Open Lever to open the disc cover during POWER OFF.



Rear/Bottom view

4 USB 2.0

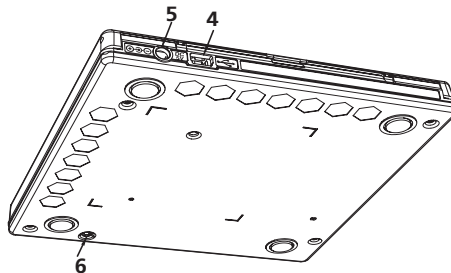
USB 2.0 Mini-B Connector

5 DC IN

AC Adapter Connector

6 Forced Open Lever

Use to open the disc cover when the drive is not powered. If the disc cover fails to open when the OPEN button is pressed, turn the power to the drive OFF and wait approximately one minute until the disc stops spinning before trying to open the disc cover. During normal operation, the OPEN button should be used to open the disc cover.



Caution

About Region codes

- The region code can **only** be changed **five (5) times**, including the initial setting. Please be aware that the fifth change becomes PERMANENT. Therefore, avoid changing the region code unless absolutely necessary.
- Region codes are part of the DVD Standard. However, region codes on DVD discs are optional. DVD discs with no specified region code can be played on all compliant players.

Connection

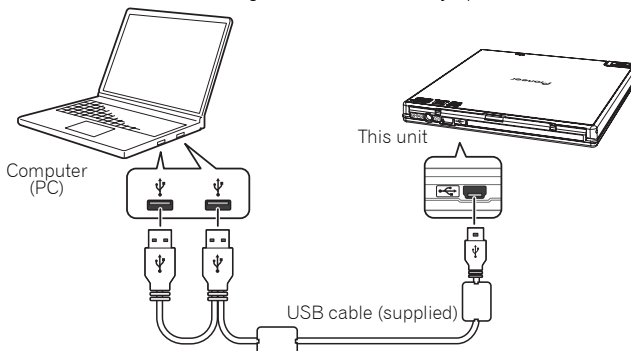
This is a hot-plug unit. Connect the unit to the supplied USB cable.

- 1 **Confirm that your computer (PC) has two available USB ports.**
- 2 **With your Windows® operating system running, use the supplied USB cable to connect this unit to the PC.**



Caution

- Do not disconnect the USB cable during data transfers.
- Do not disconnect the USB cable during the PC start nor any operation with the unit.



Note

- This unit can operate with USB 1.1 but will not provide optimum performance.
- Connecting this unit through a USB HUB or using unspecified cables may not guarantee proper operation.
- In some cases, the use of a single USB port may be insufficient for normal operation. Use two USB ports for power enhancement.

Operations

The unit writes to DVD-R/-RW media when the supplied software application is installed on your PC. Writing fails if the PC or operating system does not support the software.

Begin writing to DVD-R/-RW

- 1 Connect the necessary USB cable.
- 2 Turn on the PC.
- 3 Press the OPEN button, and gently lift the disc cover by hand.
- 4 Place the disc in the tray with the label facing up.
- 5 Close the disc cover gently.
- 6 Start the disc-burning application.

End the writing session

- 1 Quit the disc burning application.
- 2 Press the OPEN button, and gently lift the disc cover by hand.
- 3 Remove the disc.
- 4 Close the disc cover gently.
- 5 Shut down the PC.

- For software installation directions, please refer to the manual available on the software disc included with your drive. For assistance with writing or playing back discs, see the HELP function within the software application.
- When the lock mechanism is released, the disc cover needs to be fully opened in order to close again.

Manual disc cover open

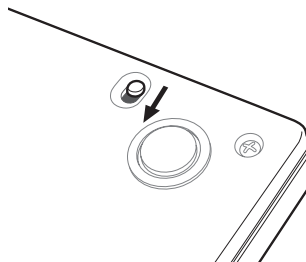
Use the Forced Open Lever to remove discs if the disc cover fails to open and all other methods have been exhausted.

- 1 Shut down the PC.
- 2 Wait for the disc to stop spinning.
- 3 Slide the Forced Open Lever to open the disc cover.
- 4 Gently open the disc cover and remove the disc.



Warning

To prevent injury and damage to the unit, do NOT force the disc cover to open while the disc is spinning.



Specifications

Position This drive is horizontal use.
Disc Size 12 cm/8 cm
*(Drive does not support non-standard shapes such as business cards, diamond, etc.)
 (Drive does not support 8 cm adapter.)*

Disc Transfer Rate * *Media that is dirty or damaged can affect the transfer rate.*

Data Read (sustained)	DVD Max. 10.8 MBytes/sec.
	CD Max. 3.6 MBytes/sec.
Data Write (sustained)	DVD Max. 10.8 MBytes/sec. (8X DVD-R)
	CD Max. 3.6 MBytes/sec. (24X CD-R)

Access Time/Seek Time *(Random Averages)*

Access Time	DVD-ROM 130 ms
	CD-ROM 130 ms
Seek Time	DVD-ROM 130 ms
	CD-ROM 130 ms

Power

Standby 0.75 W

DC IN Connector

Power Supply DC +5 V, 1.0 A (AVE)

Physical Information

Dimensions (excluding foot pad) 133 mm (W) x 14.8 mm (H) x 133 mm (D)
 Weight (Drive only) 0.22 kg (Typ.)
 Operating Temperature +5 °C to +35 °C
 Operating Humidity 5 % to 85 % (no condensation)
 Storage Temperature -40 °C to +60 °C
 Storage Humidity 5 % to 90 % (no condensation)

Accessories

Operating Instructions (This document)
 USB Cable 1
 Software disc 1
 Warranty card 1



Note

Specifications and designs are subject to possible modifications without notice, due to improvements.

© 2012 PIONEER CORPORATION.
 All rights reserved.

© 2012 PIONEER CORPORATION.
All rights reserved.

© 2012 PIONEER CORPORATION.
Tous droits de reproduction et de traduction réservés.

© PIONEER CORPORATION, 2012.
Все права защищены.

PIONEER CORPORATION

1-1, Shin-ogura, Saiwai-ku, Kawasaki-shi, Kanagawa 212-0031, Japan

Корпорация Пайонир

1-1, Син-Огура, Сайвай-ку, г. Кавасаки, префектура Канагава, 212-0031, Япония

PIONEER EUROPE NV

Haven 1087, Keetberglaan 1, B-9120 Melsele, Belgium

PIONEER HIGH FIDELITY TAIWAN CO., LTD.

8F., No.407, Ruiguang Rd., Neihu Dist., Taipei City 114, Taiwan (R.O.C) TEL : +886-2-2657-3588