

# Serial-ATA PCI Express Host Controller



## Introduction

PCI Express is the next revolution in I/O interconnects standards that will deliver the bandwidth and features required by PCs, consumer electronics and communications devices. The architecture is a cost-effective, low-pin count, and point-to-point technologies offering maximum bandwidth, reducing cost and design complexity and enabling smaller form factors. This card is the best solution for Serial-ATA PCI Express and the interface has potential transfer rates of 2.5 Gbps using Serial-ATA II host card is a single-chip, one-lane PCI Express to 2 internal or 1+1 port Serial-ATA + IDE Channel Combo host controller that brings server-class features to the desktop.

Serial-ATA II host card equips JMicron JMB363 chipset supporting all Serial ATA II features, including 3.0 Gbps SATA II transfer speeds, and IDE ATA133 133MB transfer speeds. It can support RAID 0 / RAID 1 / RAID 0+1 / JBOD and noraid different function. And programmable output signal swing strengths for longer external cables or extended backplanes, hot plugging, enclosure management and ATAPI device support.

## Feature

- Designed to meet PCI Express Base Specification Revision 1.1.
- Single-lane (or x1) PCI Express throughput supports rates of 2.5 Gbps.
- Compliant with Serial-ATA Host Controller Interface Specification 2.0
- Supports data transfer rates of 3.0G bps.
- Supports eSATA specification ( different product )..
- Support Microsoft Windows 2000, XP, Sever2003 and XP 64bit.
- Hot-swapping feature allows you to connect/disconnect devices without powering down the system.
- Support RAID 0 / 1 / 0+1 / JBOD function
- Support ATA133 transfer rate 133MB/s
- Support ATAPI CD-ROM / DVD-ROM for IDE Channel.

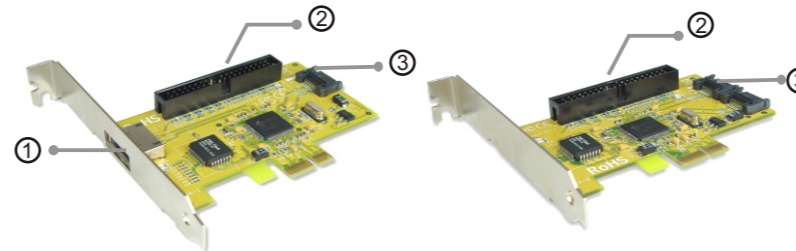
## Specifications

- Type :One-lane PCI-Express tp Serial-ATAII +IDE Combo Host Card
- Chipset : Jmicron JMB363
- Bus interface : PCI-Express 1X
- Interface : SATA II 3.0Gbps ; ATA133 133MB/s
- No . Ports : 2SATA or 1+1 SATA connector ( different product ) + 1 IDE Channel
- Transfer rate : 3.0Gbps for SATA ; 133MB/s for IDE
- Support Microsoft Windows 2000, XP, Sever2003 and XP 64bit operation system.

## Package List

- |                                     |                                     |
|-------------------------------------|-------------------------------------|
| 1. SATA PCI Express Host Controller | 2. CD Driver                        |
| 3. User's Manual (this document)    | 4.SATA Cable x 1    5.IDE Cable x 1 |

## Hardware Guide



- ① eSATA II External port
- ② IDE Channel
- ③ SATA II Internal port

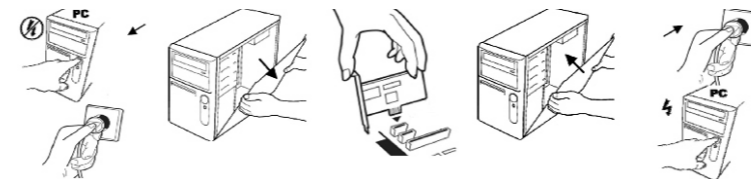
## System Requirement

1. Pentium-class computer with one available x1, x4, x8 or x16 PCI Express slot.
2. Microsoft Windows 2000, XP and Sever2003 operation system.

## Hardware Installation

Follow the instruction given below to install the PCI Express Card:

1. Turn your computer off and remove the power plug from the plug socket.
2. Remove the cover from the computer case.
3. Remove the metal cover plate on the rear of a free PCI Express slot.
4. Insert the card into one free PCI Express slot and screw it firmly on the bracket side.
5. Place the cover back onto the computer.
6. Insert the plug into the plug socket.



## Driver Installation

Once the Windows 2000, XP and 2003 startup, SATAII PCI Express card will be automatically find new device and must install driver. In order to ensure the better performance, please install driver as below steps:

1. Please insert the CD driver into your CD/DVD ROM.
2. Click the **PATH** from your CD/DVD device

**:\\PCI-Express\\Serial-ATA\\2CH\\JMicron\\driver**

3. Follow the onscreen installation step.

## Driver Installation for windows2K / XP and 2003

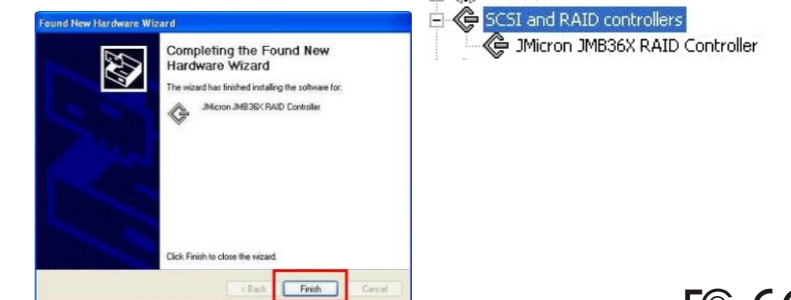
1. Choose you want to install function.
2. Click the " Next " to go next ste
3. Choose the install driver by automatically or advanced ( ex:advanced )
4. Click the " Next " to go next step .



5. Click the "browse " to choose the driver PATH  
**:\\PCI-Express\\Serial-ATA\\2CH\\JMicron\\driver**
6. Click the " Next " to go next step
7. Click the "Continue Anyway "



8. Click the " Finish " to install ok then Click on the "Device Manager" tab in System Properties, which you access from the Windows Control Panel. You should see an entry for the driver you installed under the " Jmicron JMB36X RAID Controller " item.



## Serial-ATA PCI Express Host Controller

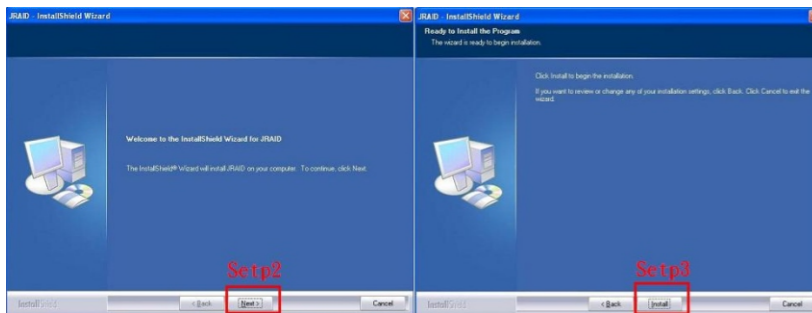
### ● Install RAID Card GUI Software

1. Go to the CD-Driver and run "SETUP.exe" file , see the logo



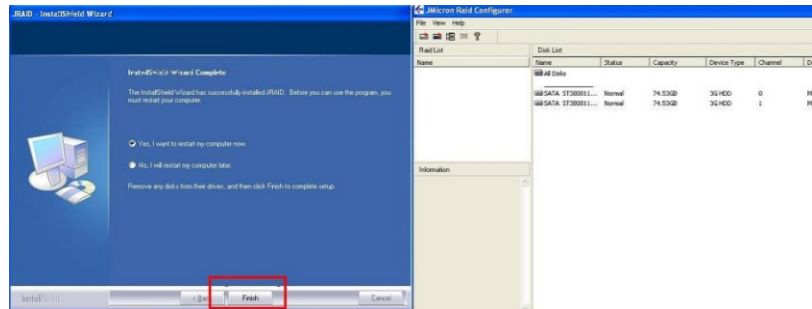
2. Click the "Next" to go next step

3. Click the "instal" to install the GUI software



4. Click the " Finish " to install ok and reboot your computer

5. And you will see the windows



### ● Starting the Guide of BIOS Configuration

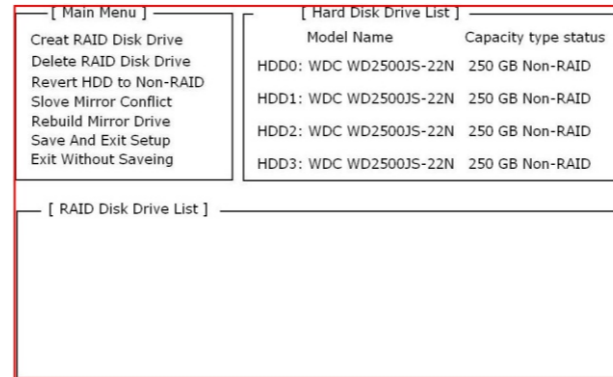
During boot up the system, the following BIOS banner displays as the below.

1. Turn on the computer you will see the message as the below ,  
press " Ctrl + J " to enter RAID Setup

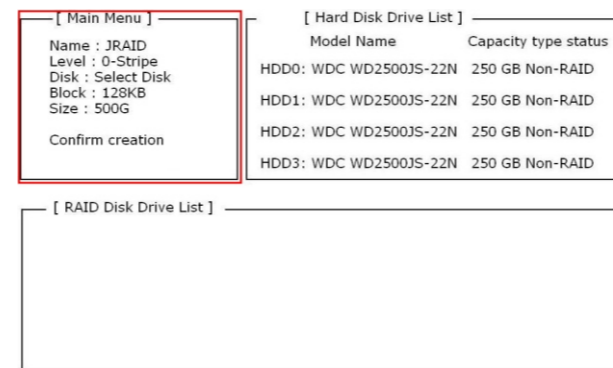
```
HDD0: WDC WD2500JS-22N 250 GB Non-RAID
HDD1: WDC WD2500JS-22N 250 GB Non-RAID
HDD2: WDC WD2500JS-22N 250 GB Non-RAID
HDD3: WDC WD2500JS-22N 250 GB Non-RAID
Press < Ctrl-J > to enter RAID Setup Utility.....
```

### ● How to Set RAID Function

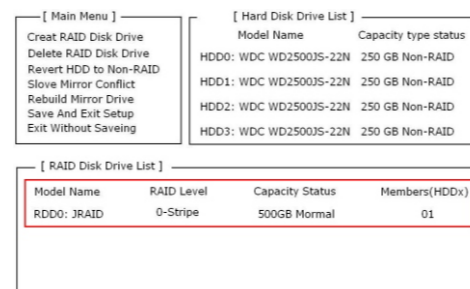
1. In to the set function , please choose and you will see the create new RAID windows.



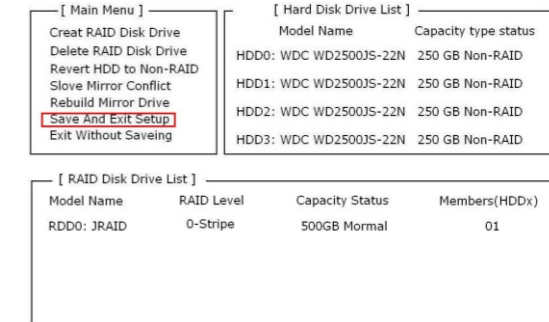
2. Click " Create RAID Disk Drive " to set RAID status. And to set your need.



3. Create RAID ok , you will see this message windows



4. Choose "Save And Exit Setup " to finish your setup



### ● How to Format HDD



2. Choose the "Disk Management"

3. Choose you want to format HDD and click "right" for the mouse to format it.

