

User Guide

Video Wonder Pro III

Copyright and Trademark Notice

© 2001 by product Manufacturer. All rights reserved.

Information in this document is subject to change without notice. No part of this document may be reproduced or transmitted in any form or by any means, electronic or mechanical without prior written permission of product Manufacturer.

Windows® is a trademark of Microsoft Corporation. All other brand names are registered trademarks of their respective companies.

Copyright and Trademark Notice

FCC Statement

This equipment has been tested and found to comply with the limits for a Class B computing device in accordance with the specifications set forth in Subpart J of Part 15 of the FCC Rules.

Contents

GETTING STARTED	5
Introduction	5
Features.....	5
Package Contents	6
System Requirements	6
SETTING-UP	7
Hardware Installation	7
Input and Output Connections	7
Using the Utility Program	8
4-1. TV Viewing	9
4-2. How to Capture Video	11
4-3. Listen to FM Radio	13
4-4. About the Remote Control	14
4-5. Accelerator Keys Summary	14

GETTING STARTED

Introduction

Thank you for purchasing our TV capture card. This product quickly and easily turns your PC into a powerful desktop multimedia system. Capture video and still images, experience real-time MPEG-1 recording. Plus, a TV capture card also provides high-quality TV viewing directly on your computer monitor! There is a standard TV capture card and a more enhanced TV capture card that is capable of Stereo sound available.

Features

- Plug & Play compliant PCI card
- 125 channel cable/antenna ready TV tuner
- Real-time MPEG-1 or AVI recording
- Fine tune for TV frequency adjustment
- Connect analog video devices for viewing
- Listen to FM radio*
- Remote control*

* denotes feature is model specific

Package Contents

When removing the contents of the package, please inspect all items to ensure no damage was sustained during shipping. The following items should be included in the package:

- one TV PCI card
- one audio cable
- Installation Manual
- Installation CD-ROM

Included in the optional package:

- one FM antenna
- one remote control unit

System Requirements

To successfully use a TV capture card, please ensure that your desktop system meets the following requirements:

- Mainboard with available PCI slot (v.2.1)
- Pentium 300 MHz or faster PC
- 32 MB RAM (minimum)
- Windows 98 SE, Windows Me, Windows 2000 and Windows XP
- CD-ROM or DVD drive
- 10 MB available hard disk space
- VGA monitor with DirectDraw installed supporting 16-bit color
- Sound card
- Speakers for audio output
- Available IRQ
- TV antenna or TV cable

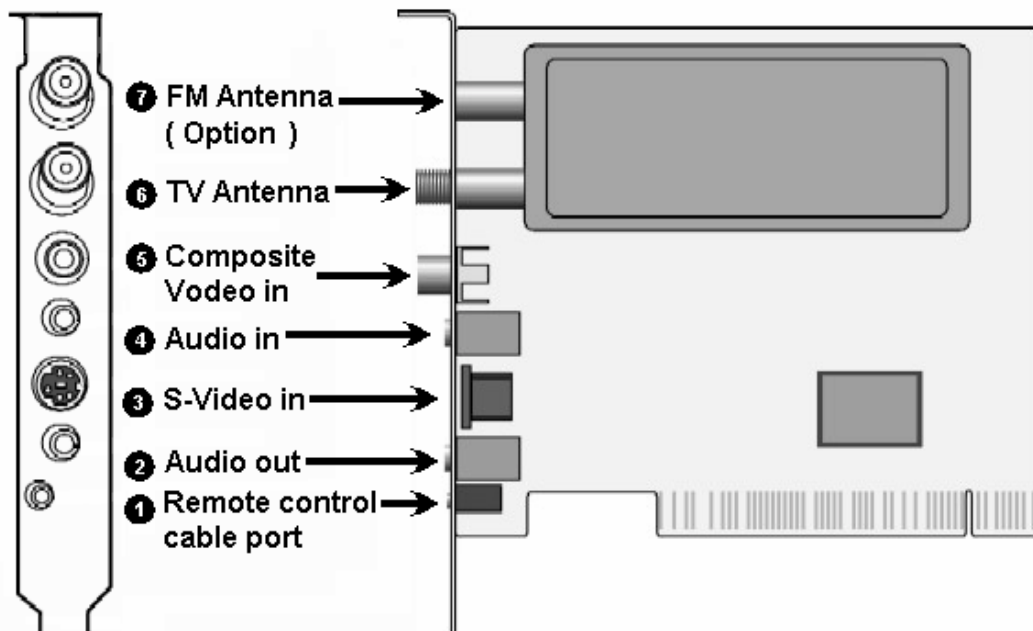
SETTING-UP

Hardware Installation

This section describes how to install a TV PCI card into a free PCI slot in a Windows 98 SE / 2000 / Me / XP operating system.

Input and Output Connections

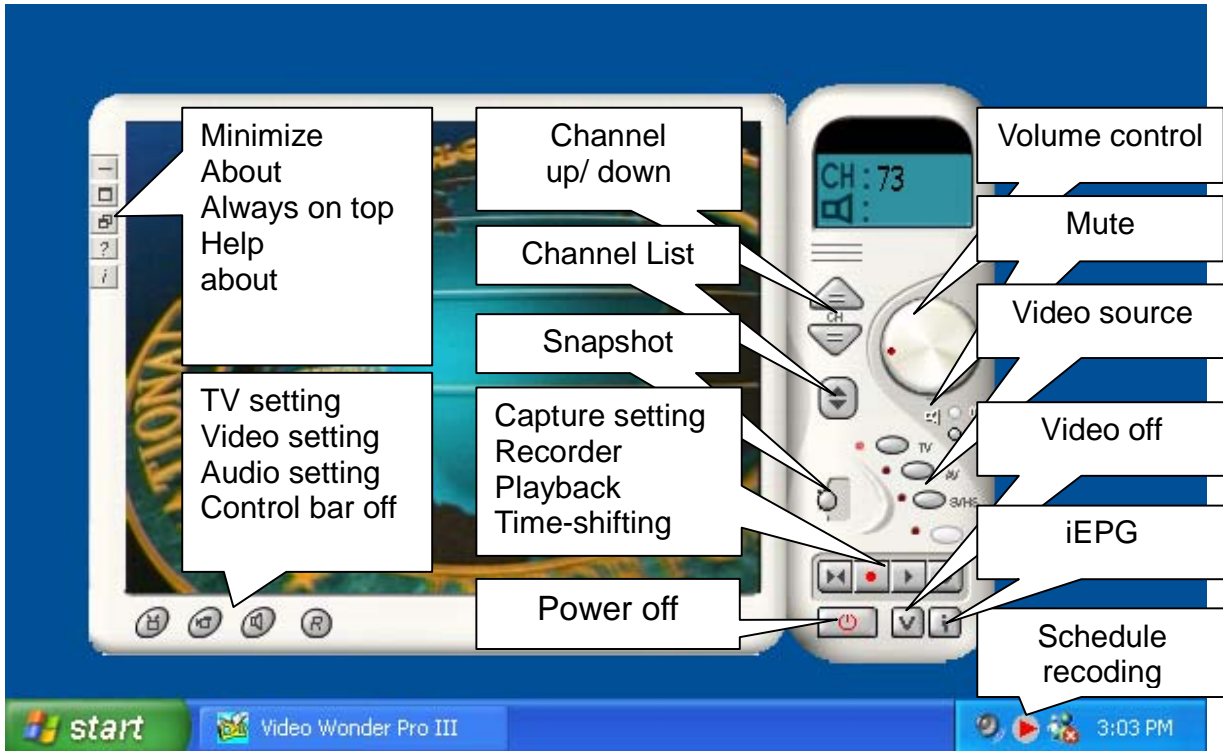
The TV PCI card support both S-Video and Composite input. See the diagram below for connection details.



- Remote control cable port
- Line-out (to sound card)
- S-Video Input
- Audio Input
- Composite Video Input
- TV antenna/cable Input
- FM cable Input

Using the Utility Program

The **Video Wonder Pro III** utility program has a user-friendly design that makes it simple to use. The Utility allows the user to control the viewing and recording of TV and video, plus listen to FM stereo (optional).



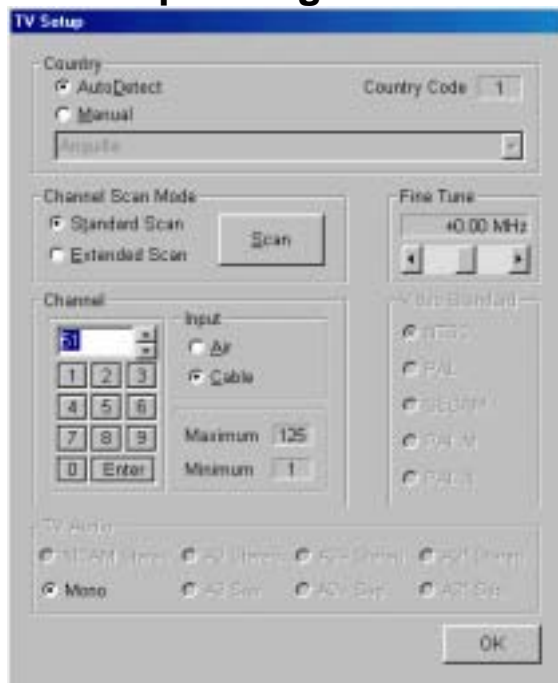
Note: When using your Video Wonder Pro III Utility program for the first time, a dialog box will appear. In order to orient the application and hardware, select either Air or Cable and then click *Scan*.

4-1. TV Viewing

TV Video control

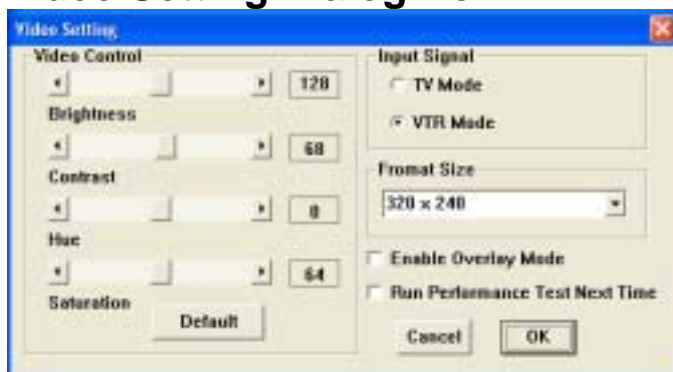
1. **Minimize** (Minimizes the window size)
2. **Full Screen** (Full screen the Video Panel or you can double click on the Video panel. It will be the same function to have full screen size)
3. **Always on Top** (Keeps window visible on desktop)
4. **Help** (Click for help information)
5. **About** (Click for version)

TV Setup Dialog Box



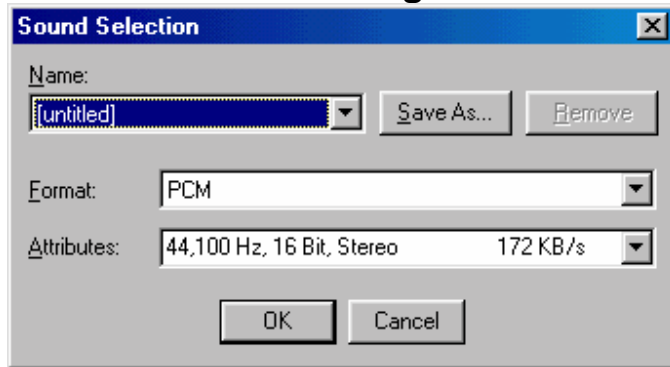
The TV Setup dialog box allows the user to select the TV system, scan for channels, select specific TV channels and adjust the video standard setting.

Video Setting Dialog Box



The Video Setting dialog box allows the user to adjust the TV display characteristics, including brightness, contrast, hue and saturation.

Sound Selection Dialog Box



The Sound Selection dialog box allows the user to adjust the audio sampling properties.

IEPG



The Integrated Electronic Program Guide (IEPG) lets you find your favorite shows for recording and viewing.

Time-Shifting



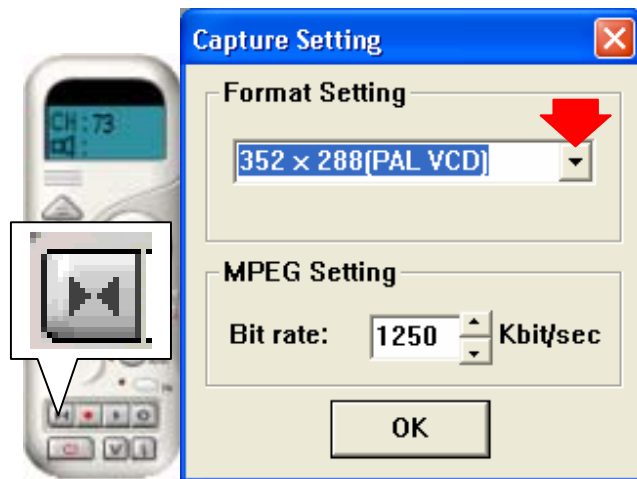
The Time-Shifting feature provides instant replay.

1. Click the **Time-Shifting** or **Pause** button to 'freeze' action on the TV show.
2. Click the **Play** button to rewind live television, as well as watch instant replays.

4-2. How to Capture Video

Capture Setting Dialog Box

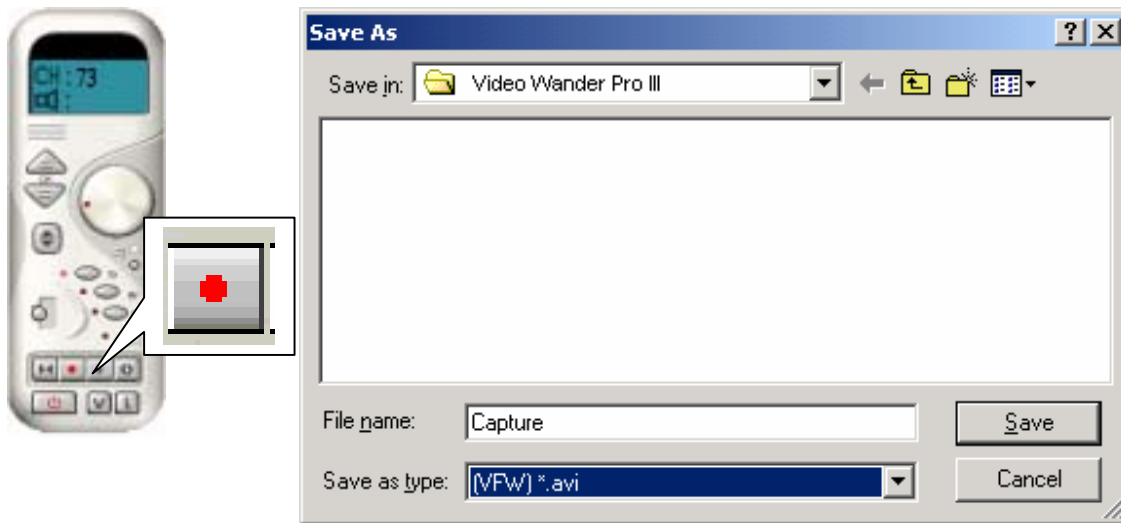
The Capture Setup dialog box allows the user to select various video format types and sizes during video recording.



- NTSC VCD use 352 x 240 video format.
- PAL VCD use 352 x 288 video format.

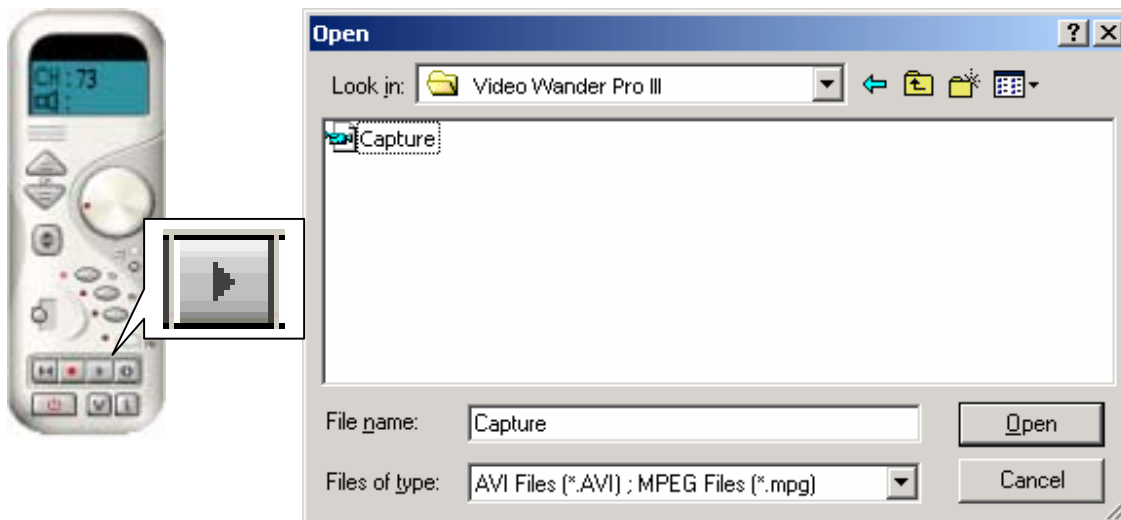
Capturing Video

1. Click the **Capture Settings** button to set the appropriate capture settings. **(See the next section under Remote Control Panel for further details)**
Note: Before proceeding to capture video, it is necessary to be tuned to a TV channel first.
2. If the capture settings are fine, simply click the **Start** button once to begin full motion recording.
3. The **Save As** dialog box appears. Click **Save** to accept the default file name and location or choose your own.
4. To stop recording either press the **ESC** key on the keyboard or click the **Stop** button.



Playing Back Video Files

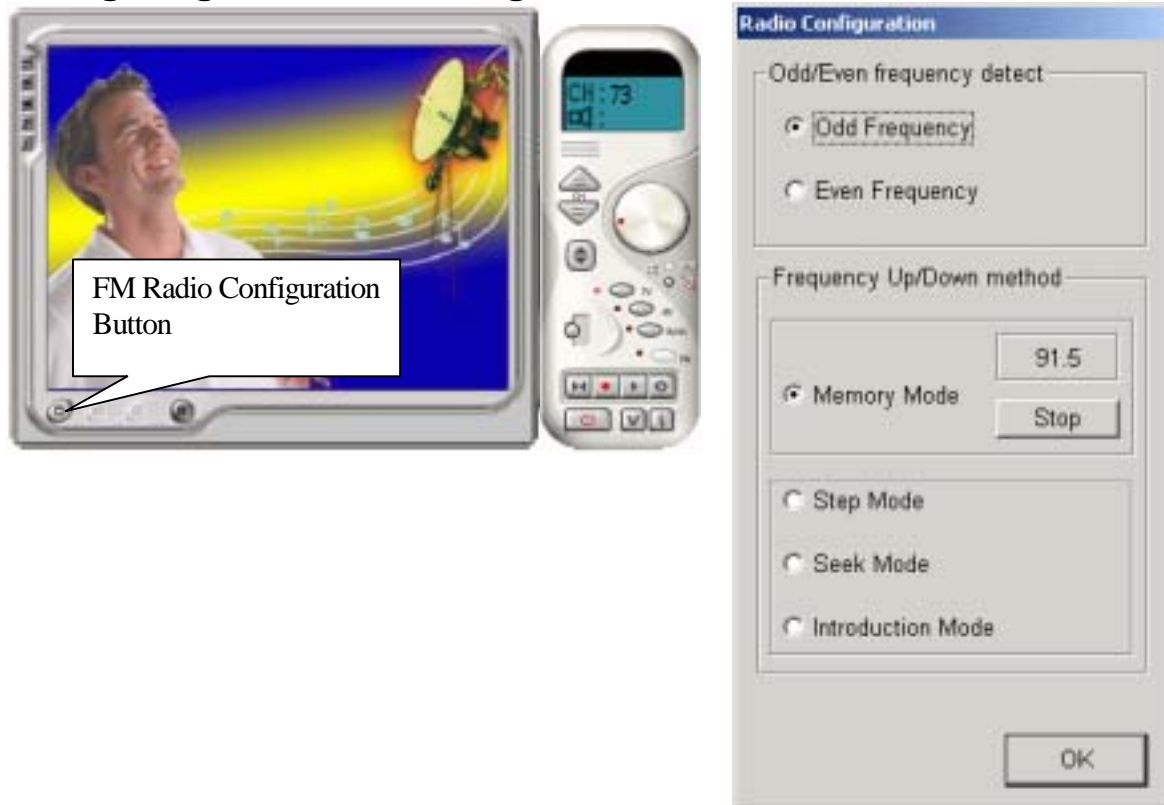
1. From **Remote Control Panel**, click the **Playback** button. A dialog box appears.
2. Locate the AVI or MPEG-1 in the file directory and either double-clicks the file or selects it and then click **Open** to begin playback.



4-3. Listen to FM Radio

The **Video Wonder Pro III** Utility Program allows the user to listen to FM Stereo on FM capable models. Simply click on the FM Mode icon located on the remote control panel to begin listening to FM Stereo on your computer.

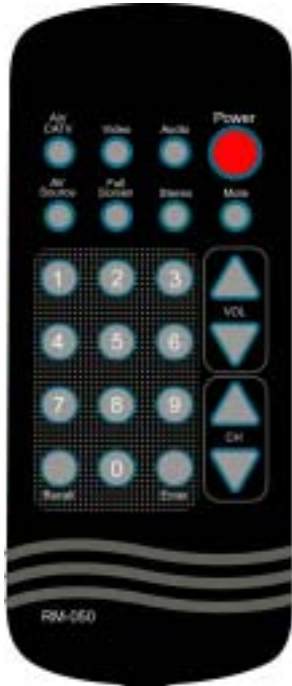
Configuring FM Mode Setting



1. From FM Mode, click the **Radio Configuration** button.
2. Select **Seek Mode** option from the Frequency Up / Down method section. Click **Scan**.
3. All frequencies will automatically be scanned for availability.

Note: For further details, please refer to the On-Line help on the software.

4-4. About the Remote Control



1. **Power:** Press this button to terminate FlyVideo program.
2. **Mute:** Press this button to mute the sound.
3. **Volume Up/Down:** Increases/decreases the audio level.
4. **Channel Up/Down:** Click this button to go to next/previous channel.
5. **Video:** Click this button to open the TV Setup Dialog Box.
6. **Audio:** Click this button to open Sound Selection Dialog Box.
7. **Full Screen:** Click this button to toggle the Video Window between full size and the previous size.
8. **Air/CATV:** Click this button to toggle between Air and CATV channels.
9. **AV Source:** Click this button to switch AV source.
10. **Numeric Keypad:** Selects the desired channel directly.
11. **Recall:** Jump to last selected TV channel.
12. **Enter:** Click this button to execute the current channel selection.

4-5. Accelerator Keys Summary

Use the following Hot-Key table for reference to conveniently control TV function via a PC keyboard or a wireless keyboard.

HOT-KEY OF KEYBOARD	FUNCTION
BACK SPACE	Recall last channel
P	Add / clear channel
B	Snapshot to clipboard
PAGE UP	Previous AV source
PAGE DOWN	Next AV source
RIGHT ARROW →	Next channel
LEFT ARROW ←	Previous channel
UP ARROW ↑	Volume up
DOWN ARROW ↓	Volume down
ALT + V	Video setting
ALT + A	Audio setting
ALT + T	TV setting