



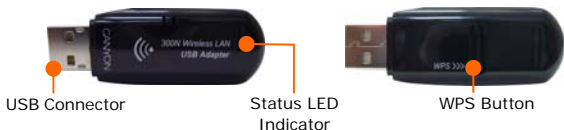
Wireless USB Adapter

Article: CNP-WF518N3 Quick Guide v1.0

Package Contents

- | | |
|---------------------------------|------------------|
| 1. CANYON CNP-WF518N3 Main Unit | 3. Quick Guide |
| 2. Driver CD | 4. Warranty Card |

Hardware Overview



Connecting to Device



1. Power on PC.
2. Insert the device into an USB 2.0 slot.
3. Insert **Driver CD** into CD-ROM to start driver installation.

NOTE:

It is recommended to install driver from Driver CD for full functionalities.

Installing Device Driver

NOTE:

Please click on **Ok** when prompted to install **Unsigned Driver**. This is a Windows system warning that indicates the specific driver program is not certified by Windows.

1. After inserting **Driver CD**, click on Setup.exe to launch driver installation process.

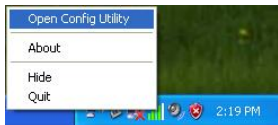
- Click on the language desired. Click on **Next** to continue or **Cancel** to exit setup.
- Click on **Next** again to continue or **Cancel** to exit setup.
- Click on **Install** to start driver installation process or **Back** to return to previous page. Click on **Cancel** to exit setup.
- The installation process may take up to a few minutes to finish. Click on **Finish** to complete installation process.

Connecting to Wireless Network

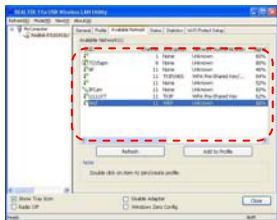
Before setting up the device, please make sure that wireless network is setup and access point/wireless router is functioning properly. Please follow below steps to join a specific wireless or encrypted network.

Using Configuration Utility

- Double-click on the desktop shortcut, click on the icon as indicated, or right click and click on **Open Configuration Utility** to pop up configuration window.



- Click on **Available Network** tab and double-click on the wireless access point desired for connection.
- Click on **Refresh** to obtain most updated list.

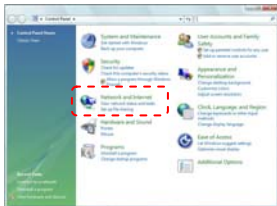


- Type in security settings as required by network connection.
- Click on **OK** to complete connection process or **Cancel** to exit.

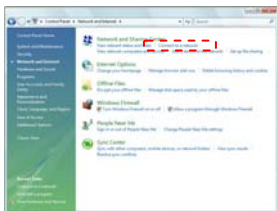


Using Configuration Utility

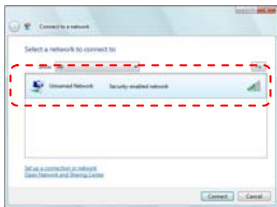
- Click on the **Start → Control Panel** and then click on **Network and Internet** option.



- Click on **Connect to a network option** under **Network and Sharing Center** title.



3. Click on the wireless access point desired for connection.
4. Click on **Connect** to continue or **Cancel** to exit.



5. Type in **SSID/Passphrase** of wireless access point if prompted.
6. The input name must be identical to the settings of wireless access point connecting to.
7. Click on **Next/Connect** to continue or **Cancel** to exit.



8. Upon successful verification, click on the options desired to enable/disable functions.
9. Click on **Close** to complete connection process.



Please refer to full manual on CD for more detailed operation information.