

Prestigio

Data Racer I

USB2.0/eSATA External HDD Enclosure

User Manual

Version 1.0

Table of Contents

1. GETTING STARTED	3
1.1 SAFETY PRECAUTIONS	3
1.2 SYSTEM REQUIRMENTS	3
1.3 PACKAGE CONTENT	4
1.4 PRODUCT VIEWS	5
2. BASIC FUNCITONS	6
2.1 PLUG & PLAY FEATURE	6
2.2 TO READ & WRITE	7
2.3 TO REMOVE DEVICE	7
3. USING TURBO HDD USB SOFTWARE	9
3.1 TO INSTALL SOFTWARE	9
3.2 USING SOFTWARE	10
3.3 TO SAFELY REMOVE DEVICE	11
3.4 SETTING CONFIGURATION	12
3.5 OTHERS	13
4. APPENDIX	14
4.1 PRODUCT SPECIFICATIONS	14
4.2 TECHNICAL SUPPORT AND WARRANTY INFORMATION	15
4.3 DISCLAIMER	15
4.4 TRADEMARK ACKNOWLEDEMENTS	15

1. Getting Started

Thank you for purchasing Prestigio Data Racer I, a stylish HDD Enclosure with ultimate performance. You have made an excellent choice and we hope you will enjoy all of its capabilities. The product offers a new concept of mobile data storage which features safety and user friendliness. Please read through the user manual carefully before using the product, and follow all of the procedures in the manual to fully enjoy all features of the product.

1.1 Safety Precautions

Please observe all safety precautions before using Prestigio Data Racer I. Please follow all procedures outlined in this manual to correctly operate the device.



Warnings:

This mark indicates actions that could lead to serious injury to personnel operating the device or damage to the device if ignored or handled incorrectly.

- Do not attempt to disassemble or alter any part of the device that is not described in this guide.
- Do not place the device in contact with water or any other liquids. The device is NOT designed to be liquid proof of any sort.
- In the event of liquid entry into interior of device, immediately disconnect the device from the computer. Continuing use of the device may result in fire or electrical shock. Please consult your product distributor or the closest support center.
- To avoid risk of electrical shock, do not connect or disconnect the device with wet hands.
- Do not place the device near a heat source or directly expose it to flame or heat.
- Never place the device in vicinity of equipments generating strong electromagnetic fields. Exposure to strong magnetic fields may cause malfunctions or data corruption and loss.

1.2 System Requirments

Below are minimum hardware and software requirements that must be satisfied to ensure the device function properly.

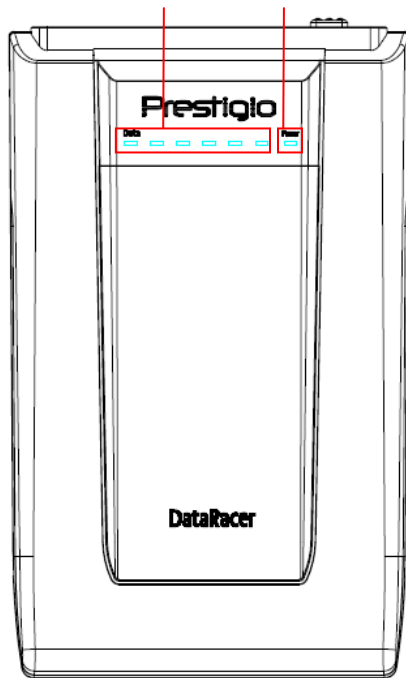
- Computer :
IBM PC/AT Compatible Personal computers, Power Macintosh, PowerBook, iMAC, or iBook
- Supported Operation System:
IBM PC Compatible : Microsoft Windows 2000/XP/Vista
Mac OS : Mac OS 9.x and 10.x or higher (FAT32 format only)
Linux : Linux 2.6 or higher (FAT32 format only)
- Memory:
Minimum of 32MB of RAM
- USB Port
- eSATA Port (optional)
- User Authority:
Administrator
- **Free hard disk space – no less than 32 MB**

1.3 Package Content

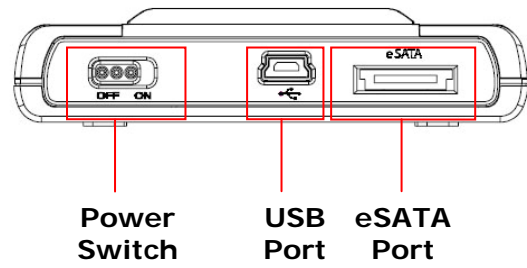
Description	Quantity
Prestigio Data Racer I Main Unit	1
25cm USB Cable	1
60cm USB Cable	1
60cm eSATA Cable	1
Stylish Leather Case	1
Quick Guide and Yellow Serial Key Sticker	1

1.4 Product Views

R/W
LED Power
LED



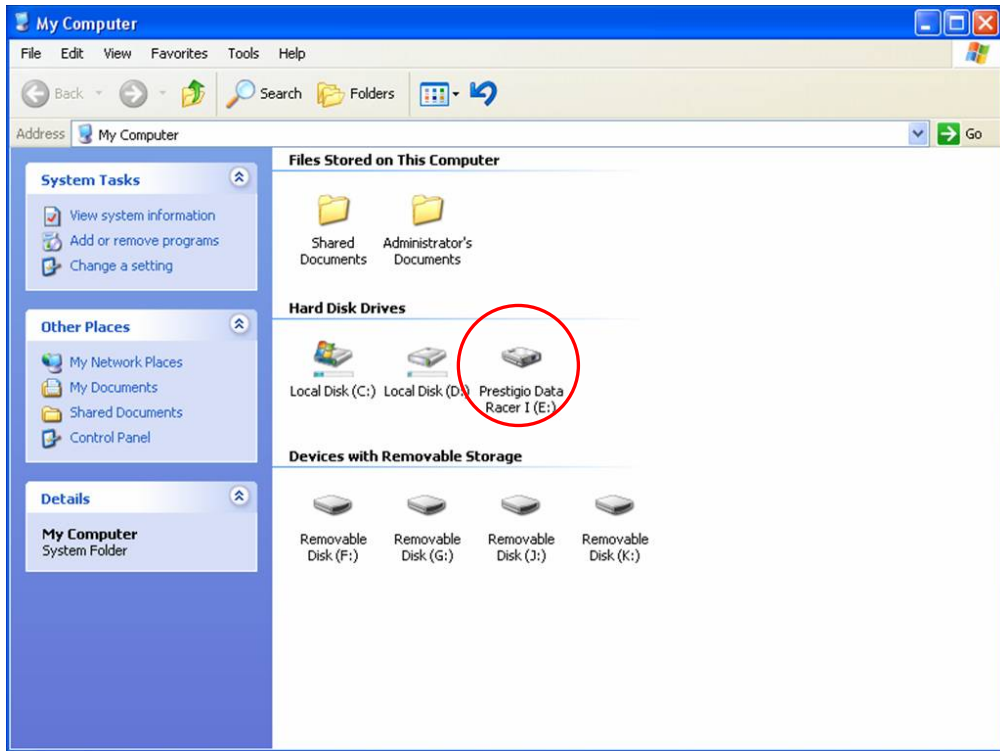
Front View



Top View

2. Basic Functions

2.1 Plug & Play Feature



USB Port

In **Windows** System, when you connect the device into the USB port of your computer, a **Prestigio Data Racer I** icon will appear in the file manager window as shown above.

On **Macintosh** machines, you can notice the disk icon in the "Desktop" once you plug in the device into the USB port. Before using the device, please format the device in to MAC compatible file system (FAT32 format only).

In **Linux** OS, you can mount the device executing the following instructions.

- Check the device information in `dev/s*` , write down the mount point.
- Make a directory in `/media` (ex: `mkdir/media/prestigio`)
- Then, execute `sudo mount -t ntfs-3g/dev/sdb1/media/prestigio -o force` (if mount point was `/dev/sdb1`)

eSATA Port (For Windows System Only)

1. Please make sure the power switch is at **OFF** position before connecting device to PC. Plug eSATA cable into appropriate eSATA port and then connect the USB cable to its appropriate USB port. The power is provided through USB port in eSATA mode.
2. Slide power switch bar to **ON** position to turn on device. When correctly

connected, a Prestigio DATA RACER I icon will be displayed in the file manager window.

NOTE:

- eSATA compatibility may vary depending on user's hardware configuration and operation system. Some eSATA controllers may require system reboot process to be able to recognize the new device.
- The device is set up that eSATA connection as first priority of data transmission mode. In case that both eSATA and USB connection are established, eSATA connection will be automatically designated as data transmission purpose and USB connection will be for power supplying purpose.
- It is recommended to use Y shaped USB cable for more secure and steady power supplying purpose. Please plug in both ends of USB cable into appropriate USB slots. Avoid using USB hubs for they may not provide sufficient power.

2.2 To Read & Write

You can retrieve or store files in the device as operating with a hard disk. The read/write operation of the device is the same as that of a hard disk.

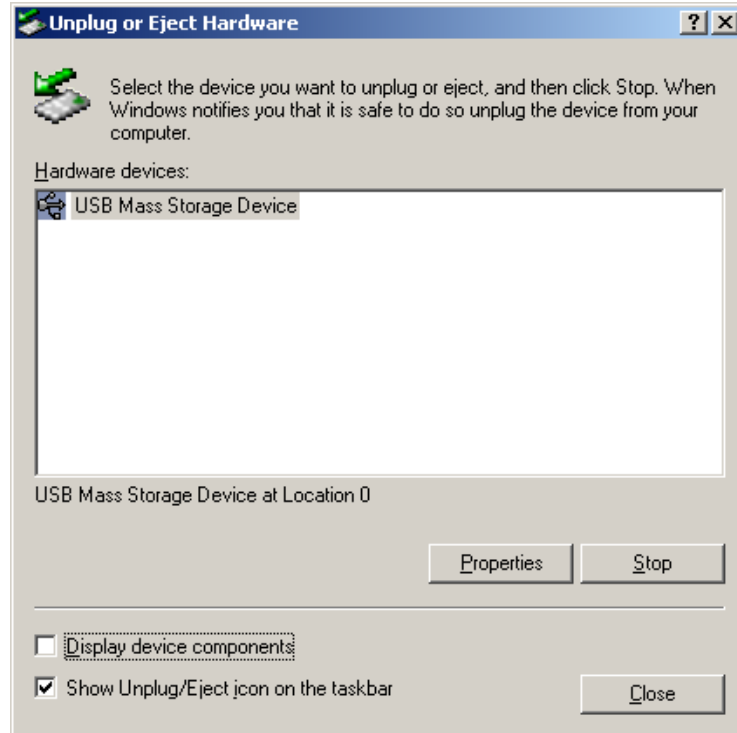
2.3 To Remove Device

To minimize risks of data loss on Windows XP and Vista OS, please follow the removal procedures as follows:

- ◆ You can find the safe removal icon in your computer's notification area.



- ◆ Double click the "safe removal" icon; the **Unplug or Eject Hardware** window will pop up.
- ◆ You can select the device you want to remove. Then, click the **Stop** button. You can safely unplug the device from the USB port of your computer after.



Warning:

Before removing the USB device, make sure the LED is not flashing. There is traffic going on between the host computer and the USB device when the LED flashes quickly. Do NOT remove the USB device at this moment. Violation may cause data loss or even damages to the Prestigio Data Racer I.



Warning:

If you do not follow the safe removal procedures on Windows, Windows XP and Windows Vista operating systems, data loss may occur due to "write cache" issue.

On Macintosh operating systems, you can drag the removable disk icon into the trash. This action will perform the "Eject" function.

On Linux operating system, please follow the "demonmount" procedure to demonmount the device.

3. Using Turbo HDD USB Software

3.1 To Install Software



Warning:

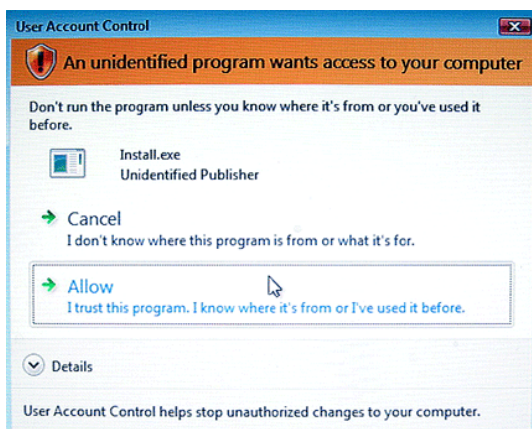
- Please log in as administrator before installing TurboHDD USB Software if your operating system is Windows 2000/XP.
- Please back up all critical data including TurboHDD USB Software installation files before installing software. In case of software data loss or corruption, please refer to <http://www.prestigio.com/product/downloads> for software downloading service.



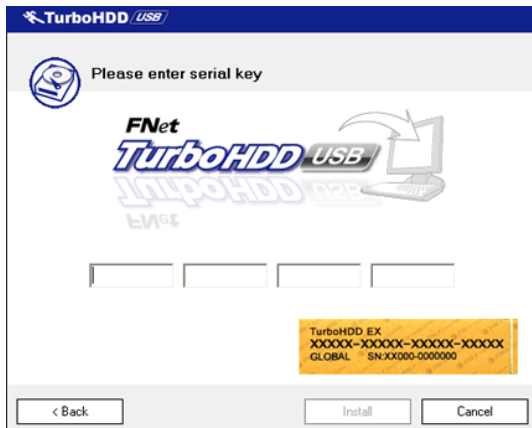
1. Connect Hard Disk Enclosure device with PC with USB cable provided.
2. An autorun window will pop up automatically. Please select **FNet Turbo HDD USB** option to continue.
3. Click on the minimized window on toolbar to bring up the **User Account Control** dialog box.

NOTE:

- Please proceed to step 5 if your operating system is not Windows Vista.



4. Click on **Allow** option in the **User Account Control** dialog box prompted.



5. Please enter the serial key number obtained from the last page of quick guide.
6. Click on **Install** button to start installation process. Click on **Back** button to return to previous page and **Cancel** button to stop process.

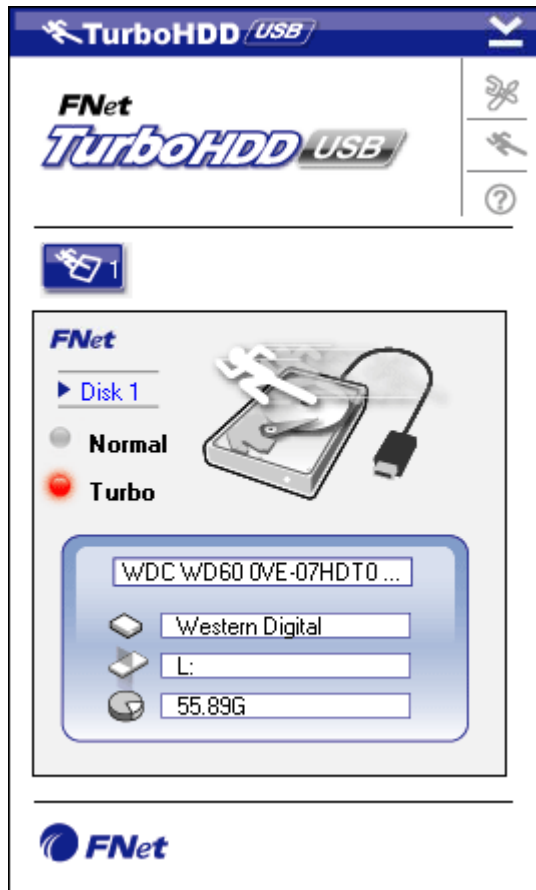


7. After the software installation is successfully completed, Please remove Data Racer I and reconnect it to your PC again.



8. Upon successful installation and activation, TurboHDD software interface will pop up automatically.

3.2 Using Software



1. Click on desktop shortcut "TurboHDD USB" or click on Start → Program Files → "TurboHDD USB" → "TurboHDD USB" to initiate software.
2. Upon entering the main menu, detailed information of Hard Disk Enclosure is displayed at the bottom of the interface. The software is set at **Turbo** mode by default.
3. Click on "Hard Disk" image to toggle between **Turbo** and **Normal** mode.

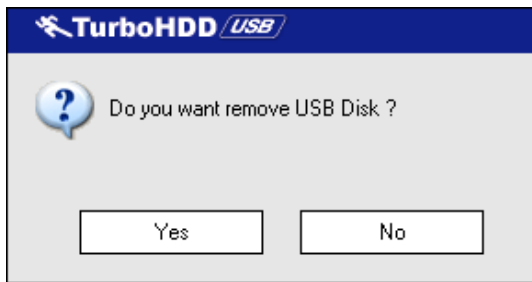


- **Turbo** mode: The software accelerates data transmission speed and efficiency.
- **Normal** mode: Data transmission maintains normal speed unaided.

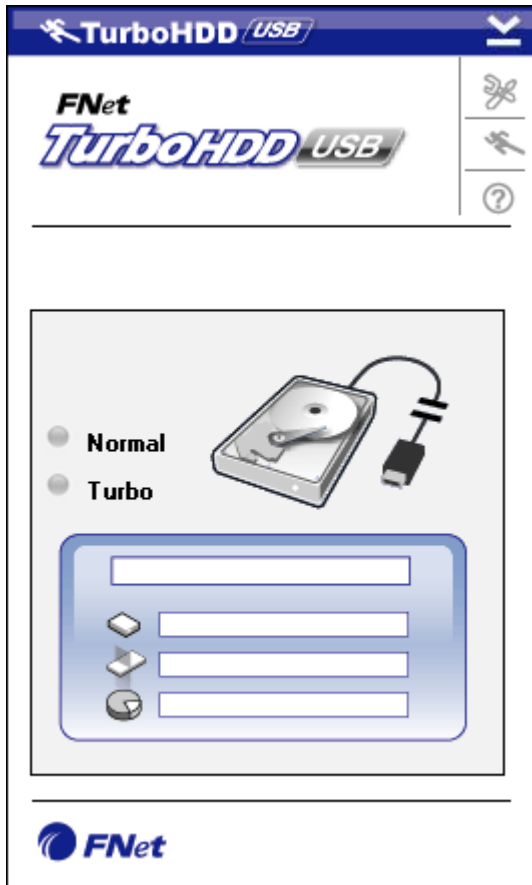
3.3 To Safely Remove Device



1. Click on **USB Cable** image located to the side of **Hard Disk** image to safely remove Hard Disk Enclosure from PC.



2. Click on **Yes** button to confirm removal or **No** button to cancel action.



3. The **USB cable** image is now disconnected from "hard disk" image. The hard disk is safely disconnected from PC.
4. To execute the software again, simply physically disconnect the hard disk enclosure and connect it to PC again.

3.4 Setting Configuration



1. Click on the **Settings** icon at the top right corner of software to enter settings window.



2. Select desired software language from the drop down text box.

3.5 Others



- Up to 2 USB HDD enclosures can be supported and accelerated by the software. Simply click on icons to toggle between 2 USB HDD enclosures.



- Click on **About** icon to read about software information.



- Click on ? icon to bring up help menu.



- Right click on the TurboHDD icon on the notification area to access basic function.

4. Appendix

4.1 Product Specifications

Product Feature	Prestigio Data Racer I USB2.0/eSATA External HDD Enclosure
Interface	<ul style="list-style-type: none">● USB2.0 Interface (Max 480mbps)● eSATA Interface (Max 3.0Gbps)
HDD Type	2.5" 7200RPM or 5400RPM HDD
HDD Capacity	320/500GB+
Power Supply	Directly from USB port
Software Included	TurboHDD USB Software

4.2 Add-on Card List

Number	Core IC Type	Card Type	Core Function	Platform	Testing OS
Card-SATA-01	JMicron JMB360 A stepping	PCIE X 1	SATA	MB-05	WinXP SP3
Card-SATA-02	Promise PDC20771 (RAID SATA II 300)	PCI	SATA	MB-05	WinXP SP3
Card-SATA-03	Initio INIC-1622TA2	PCI	SATA	MB-05	WinXP SP3
Card-SATA-05	Initio INIC-1622TA2	PCI	SATA	MB-05	WinXP SP3
Card-SATA-06	Silicon Image SiI3112ACT144	PCI	SATA	MB-05	WinXP SP3
Card-SATA-07	Silicon Image SiI3512ECTU128	PCI	SATA	MB-05	WinXP SP3
Card-SATA-09	Silicon Image SiI3124ACBHU	PCI(64 bit)	SATA	MB-05	WinXP SP3
Card-SATA-10	Silicon Image SiI3132CNU	PCIE X 1	SATA	MB-05	WinXP SP3
Card-SATA-11	JMicron JMB363 C stepping	PCIE X 1	SATA	MB-05	WinXP SP3

4.3 Technical Support and Warranty Information

Please refer to www.prestigio.com for technical support and warranty information.

4.4 Disclaimer

We made every effort to ensure that the information and procedures in this user manual are accurate and complete. No liability can and will be accepted for any errors or omissions. Prestigio reserves the right to make any changes without further notice to any products herein.

4.5 Trademark Acknowledgements

- IBM is a registered trademark of International Business Machines Corporation.
- iBook and iMac are trademarks of Apple Computer, Inc.
- Macintosh, PowerBook, Power Macintosh are trademarks of Apple Computer, Inc.
- Microsoft Windows XP, Windows Vista, and are either registered trademarks of Microsoft Corporation in the United States and/or other countries.

Other names and products not mentioned above may be registered trademarks of their respective companies.