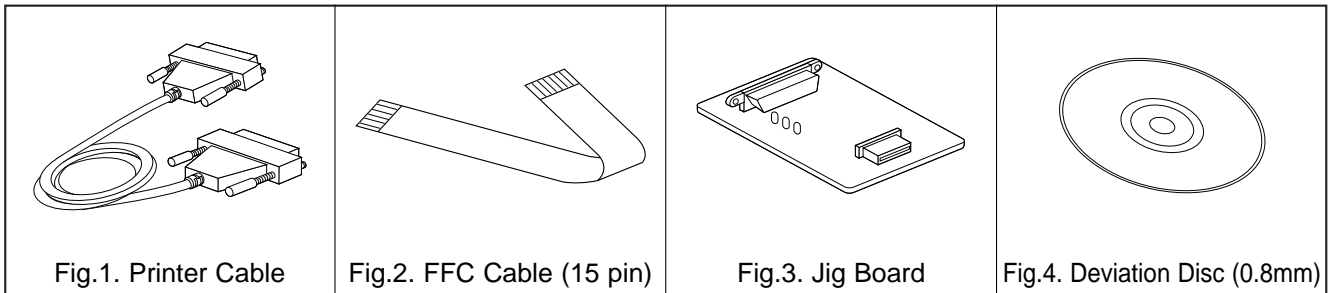


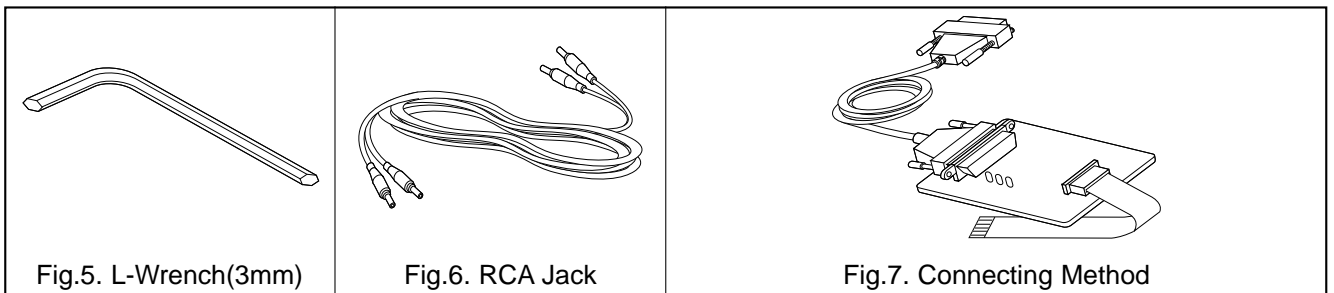
DECK MECHANISM ADJUSTMENT

1. Tools and Fixtures for SVC

• For SVC Program Down-Load

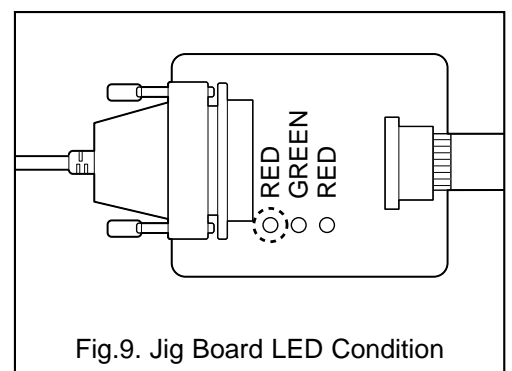
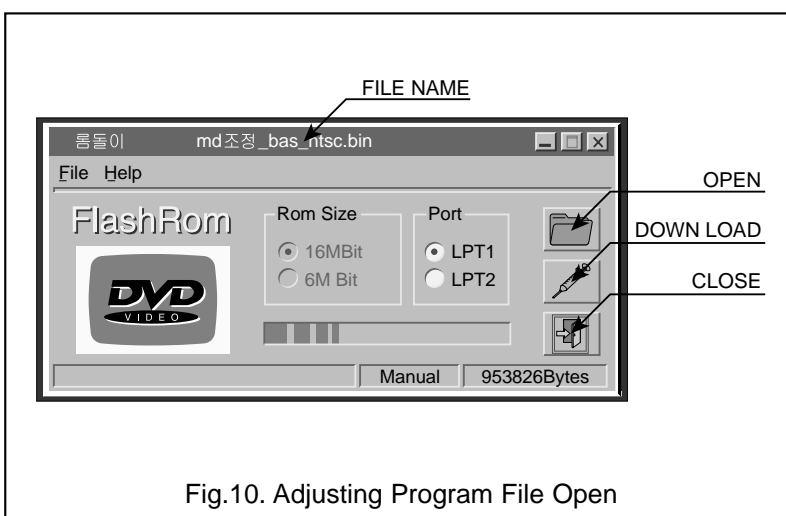
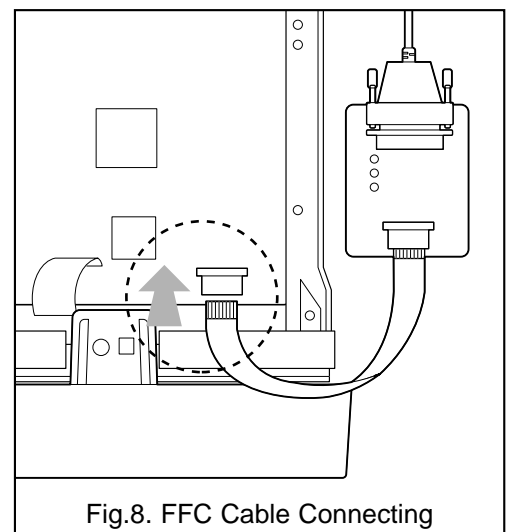


• For T-Skew and R-Skew Adjustment



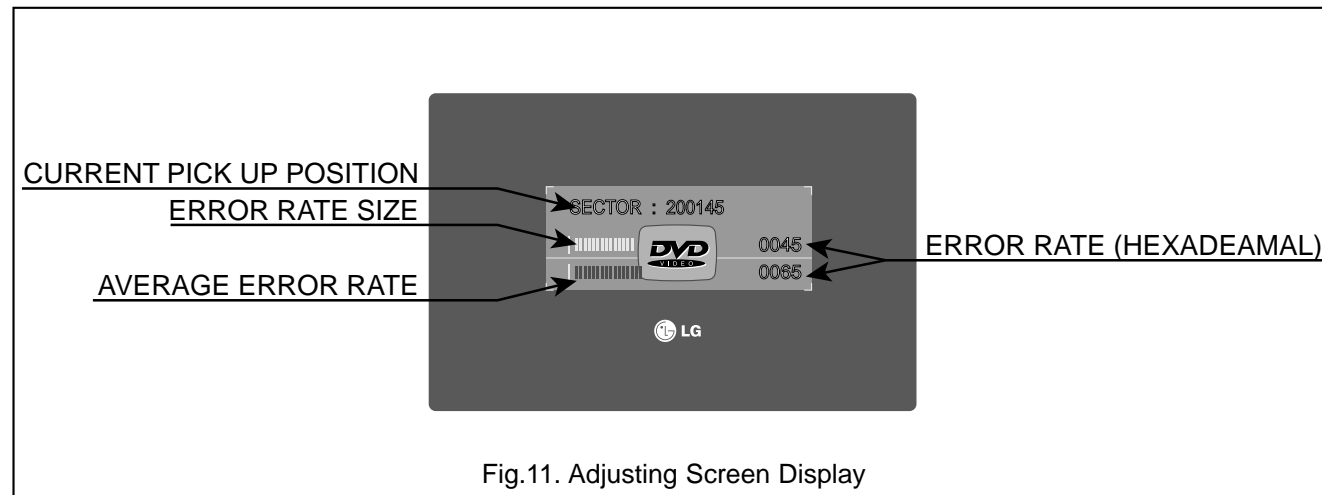
2. Install Process

1. Connect Fig. 1, 2, 3 as Fig. 7.
2. Plug out the Power cord of DVD set.
3. Connect FFC Cable(Fig.2) to the Connector on DVD Set(Fig.8)
4. Connect Printer Cable(Fig.1) to the P.C.Printer Port (LPT1).
5. Plug in the DVD Power cord.
6. Press the Menu key on Remocon.
7. Confirm No.1 LED(RED Color) of Jig board is ON. (Fig.9)
8. Perform The S/W for Down-load at P.C.
9. Open the Program File for Adjusting(Fig.10)
10. Click the Down-load Icon and perform Program Down-load.
11. Displayed remaining time.
12. Confirm LED No.1(RED) and No.2(GREEN) is ON.
13. Plug out the DVD Set Power cord.
14. Disconnect the FFC Cable.



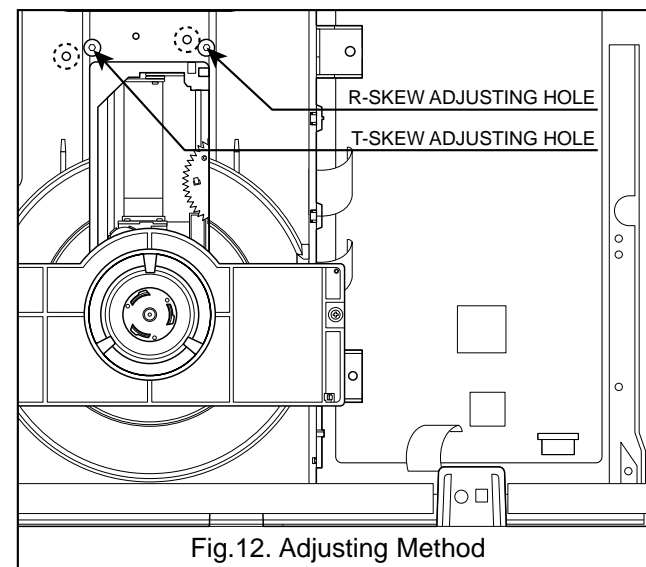
DECK MECHANISM ADJUSTMENT

MEMO



3. Adjustment Procedure

1. Insert Disc(Only Open/Close Key Pressing)
 2. Wait Until the Sector Display is about 200,000 (Fig.11)
 3. Adjust R-Skew adjusting Point until the Error rate has Minimum rate with L-wrench (3mm).
 4. Adjust T-Skew Adjusting Point until the Error rate has Minimum rate.
 5. Repeat No. 3, 4 adjusting procedure until the Error rate have Minimum rate.
 6. Error rate; SVC-3561 Disc=below 30 and TDV-533 Disc=below 100. If not, Please confirm Play ability on screen.
- # You can watch the screen when pressing the Stop key after the Adjusting is finished, Then perform Play and Scan/Skip operation at Chapter1 and Chapter16 and confirm screen condition, normal or abnormal.
- Please obtain these software for Adjusting through our Global Cyber Service Center(GCSC).
 - The location is <http://biz.lgservice.com>
 - & Web Site for End users
 - & Software updates
 - & Product : DVD Player
 - & Search.



A series of horizontal dashed lines for taking notes.