



CANYON

Wireless USB Adapter

Article: CNP-WF518 Quick Guide v1.0

Package Contents

1. **CANYON CNP-WF518** Main Unit
2. Driver CD
3. Quick Guide
4. Warranty Card

Hardware Overview



Connecting to Device



1. Power on PC.
2. Insert the device into an USB 2.0 slot.
3. Insert **Driver CD** into CD-ROM to start driver installation.

NOTE:

It is recommended to install driver with **Driver Installation Wizard** which will install both device driver and utility program.

Installing Device Driver

NOTE:

Please click on **Ok** when prompted to install **Unsigned Driver**. This is a Windows system warning that indicates the specific driver program is not certified by Windows.

1. Upon inserting Driver CD, the configuration menu should pop up automatically.
2. Please proceed with Driver Installation Wizard to install driver.

3. Click on **Install Driver &Utility for Wireless USB Adapter** to continue.
4. Select preferred setup language.
5. Click on **Next** to continue or **Cancel** to exit.
6. Click **Next** again at InstallShield Wizard page or **Cancel** to exit.
7. Click on **Install** to initiate installation process or **Cancel** to exit.
8. Click on **Finish** to complete driver installation.

Internet Connection Wizard

Before setting up the device, please make sure that wireless network is setup and access point/wireless router is functioning properly.

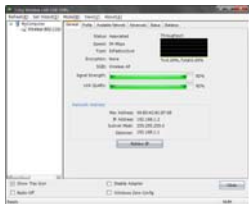
1. Click on **11bg Wireless LAN USB Utility** desktop shortcut icon to start utility program.

NOTE:

Utility program will only be available when installing driver from **Drive CD**.



2. The Utility main page will be displayed as shown.
3. To setup basic wireless network with existing access point or wireless router, click on **Set Wizard** on tool bar menu.



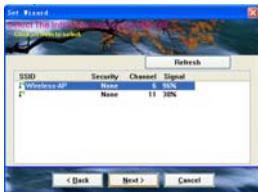
4. Select connection mode. **Station (infrastructure)** mode is recommended for Internet access.
5. Click on **Next** to continue or **Cancel** to exit.

NOTE:

The device will be restarted upon selecting **AP** option.



6. Select desired wireless connection and click on **Next** to continue or **Cancel** or exit.
7. Click on **Refresh** to update wireless connection list.



8. Review wireless network settings.
9. Enter **Passphrase** or **Network Key** if required.
10. Click on **Ok** to continue or **Cancel** to exit.



11. Select **Obtain an IP address automatically** and **Obtain DNS server address automatically** when DNS service is enabled in the wireless network.
12. Select **Use the following IP address** only when required by network administrator.
13. Click on **Finish** to complete configuration.



Please refer to full manual on CD for more detailed operation information.